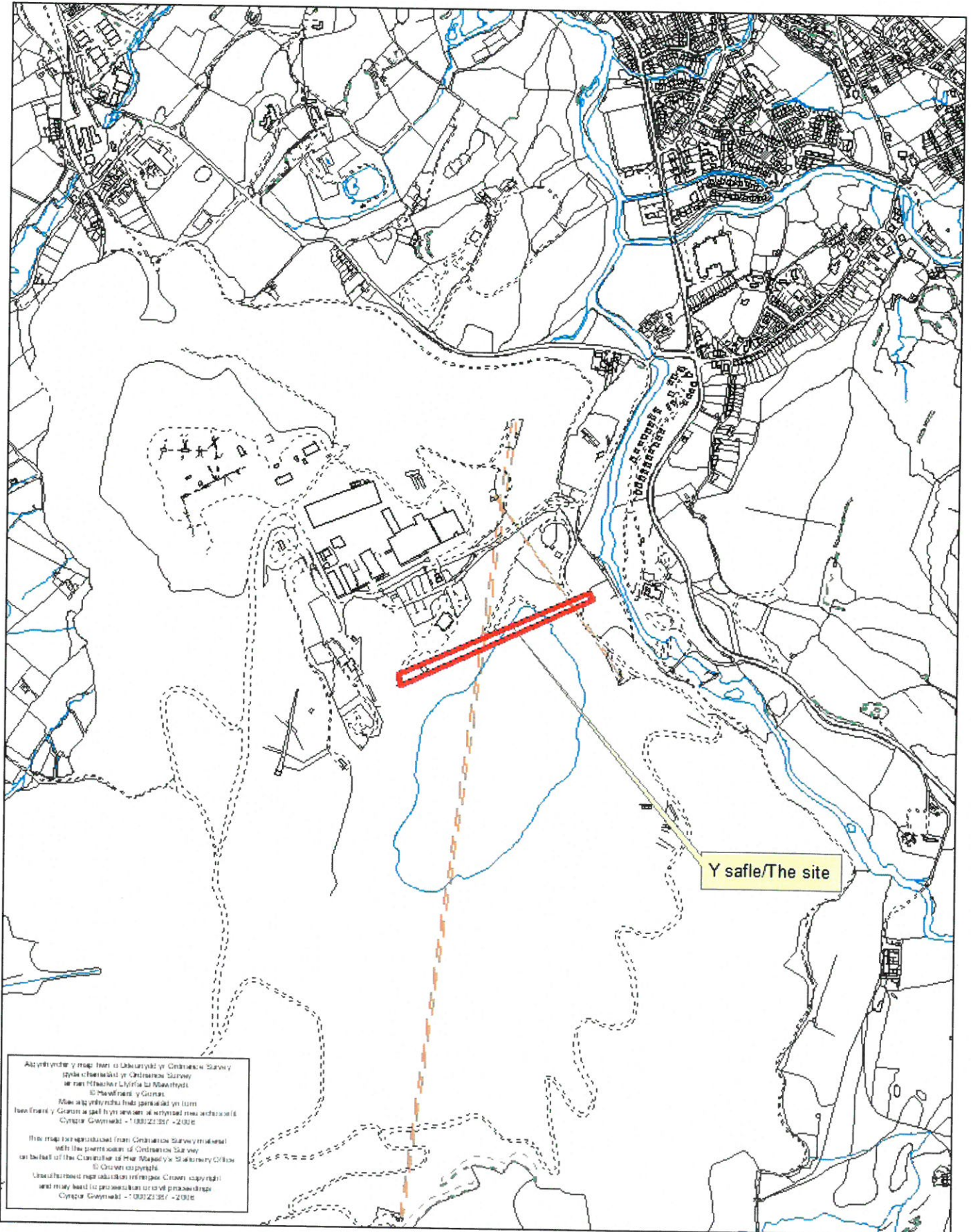




Rhif y Cais / Application Number : C17/0908/16/LL

Cynllun lleoliad ar gyfer adnabod y safle yn unig. Dim i raddfa.
Location Plan for identification purposes only. Not to scale.



Aqynfynch y map hon o ddiwydiad y Cynllunio Sarny
 sydd eiddoedd y Cynllunio Sarny
 ar rannu'r Cynllunio Sarny a Mawrth
 © Mawrth y Cynllunio
 Mae aqynfynch hon genned yn lwm
 lawfrwy y Cynllunio Sarny a Mawrth a Mawrth
 Cynllunio Sarny - 100/22/357 - 2016

This map reproduced from Ordnance Survey material
 with the permission of Ordnance Survey
 on behalf of the Controller of Her Majesty's Stationery Office
 © Crown copyright
 Unauthorised reproduction infringes Crown copyright
 and may lead to prosecution or civil proceedings
 Cynllunio Sarny - 100/22/357 - 2016

NOTES

1. This drawing must be read in conjunction with all other relevant drawings and the specification.
2. All dimensions must be checked on site and confirmed with the contractor, prior to commencing construction or setting out. All dimensions are given in metres. It is the responsibility of the contractor to ensure the correct setting out of the work on site.

Peter Du Cane

CONSULTANT ENGINEER
 227, 228 & 229, The Arcade,
 17/200 St. Asaph, Gwynedd,
 North Wales LL23 7AB
 www.peterducane.com

Rev.	Revision details	Date

Client
Zip World

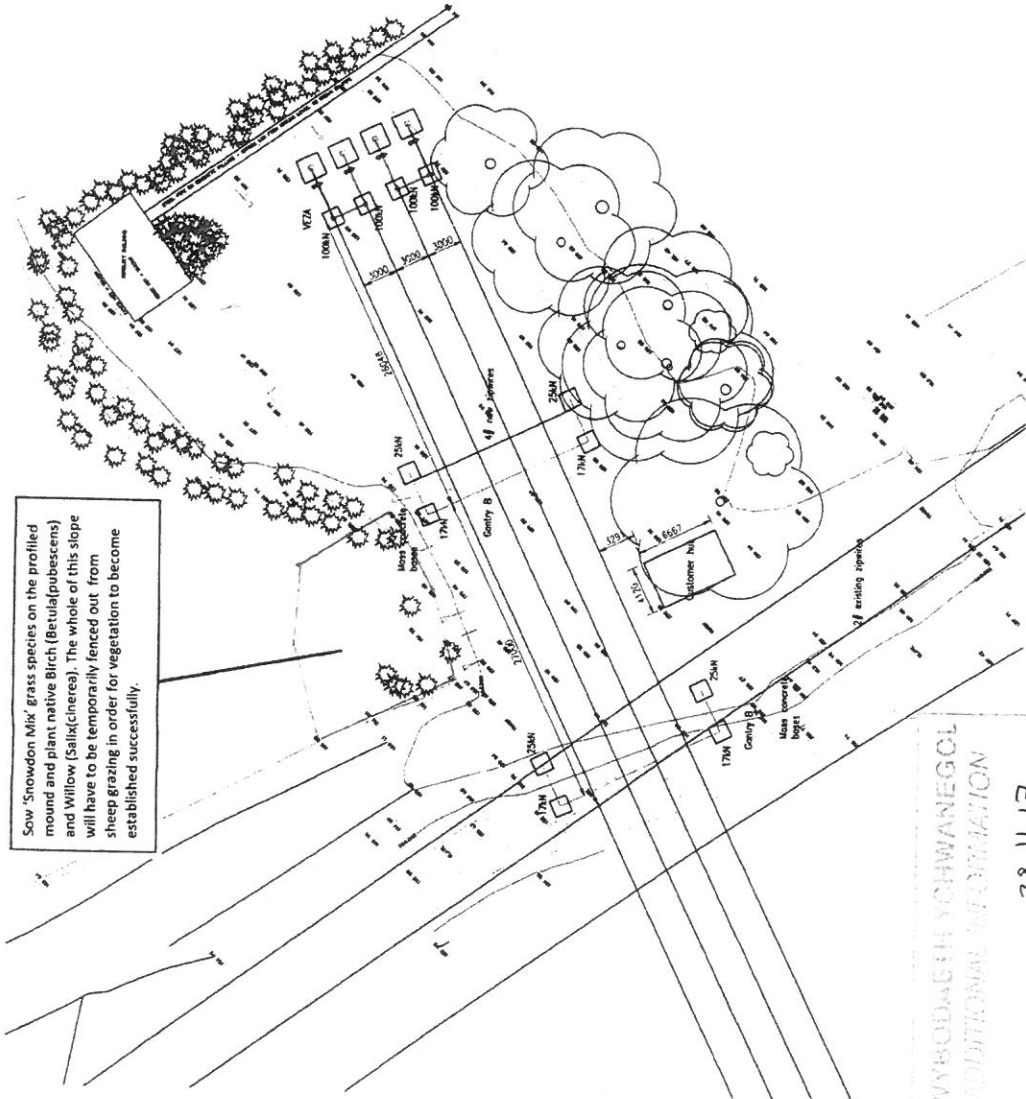
Architect

Job title
Penrhyn Redevelopment

Drawing title
Little Base

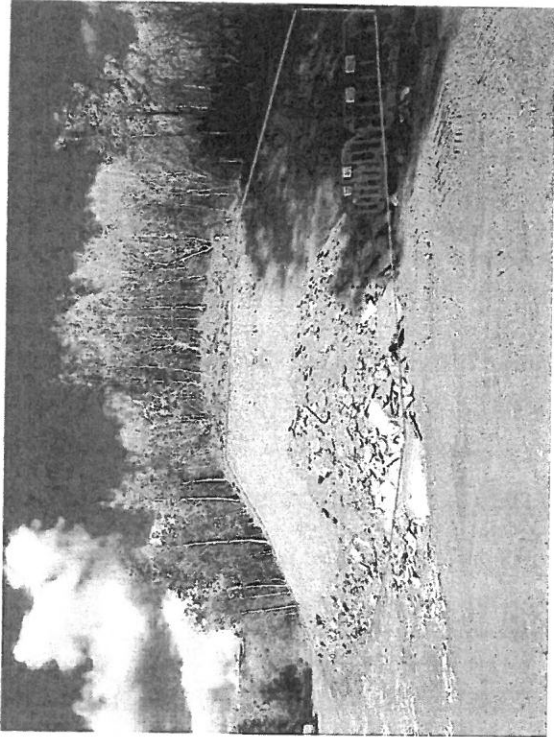
DRAWING No. 17/4834-03P
 Date 17/09/17
 Scale 1/200 at A1
 Drawn by JPC

Sow 'Snowdon Mix' grass species on the profiled mound and plant native Birch (*Betula pubescens*) and Willow (*Salix cinerea*). The whole of this slope will have to be temporarily fenced out from sheep grazing in order for vegetation to become established successfully.

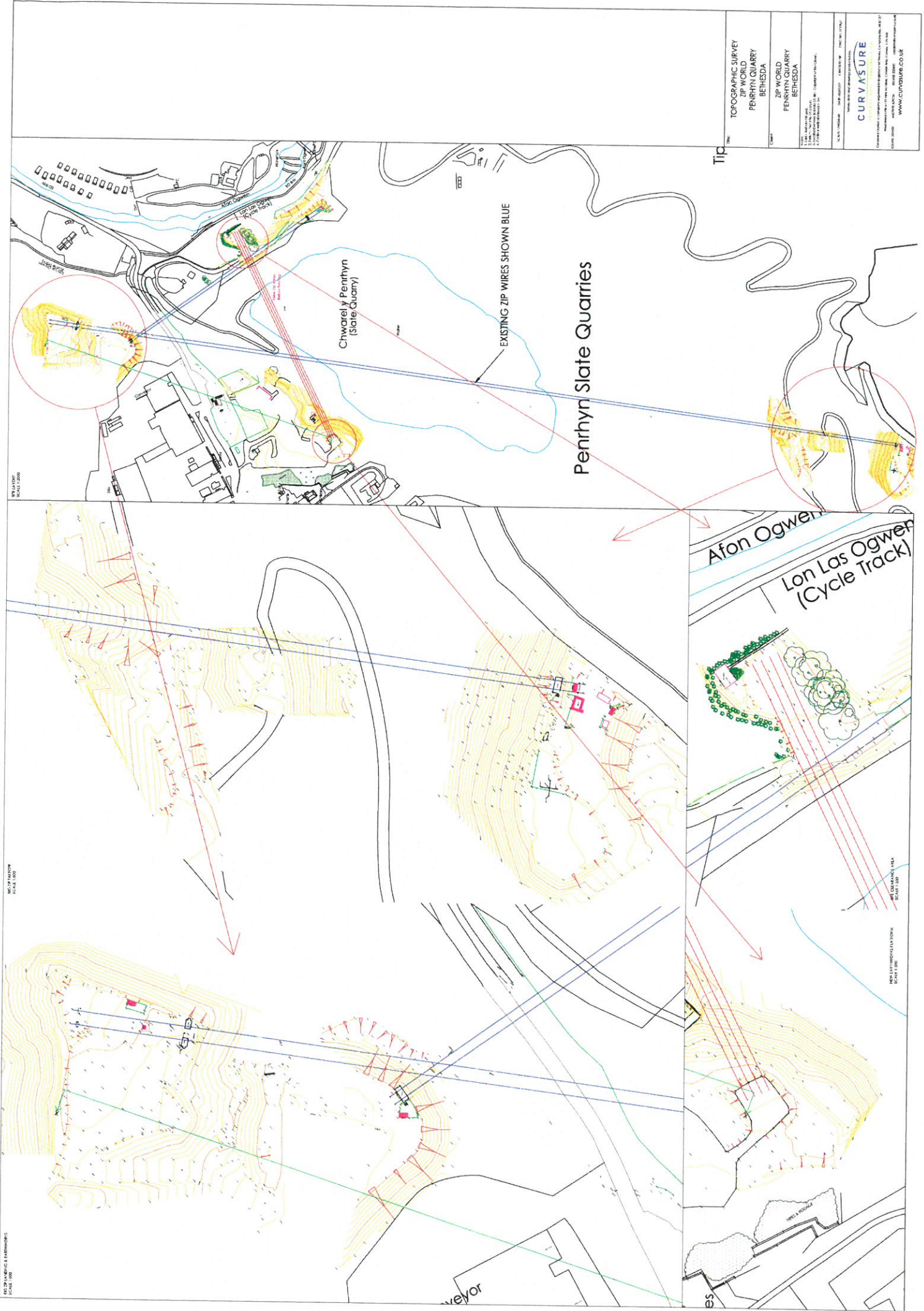


GWYBODAETH YCHWANEGOL
 ADDITIONAL INFORMATION
 28.11.17
 Fw.

Photograph showing proposed planting area



Sow 'Snowdon Mix' grass species on the profiled mound and plant native Birch (*Betula pubescens*) and Willow (*Salix cinerea*). The whole of this slope will have to be temporarily fenced out from sheep grazing in order for vegetation to become established successfully.



TOPOGRAPHIC SURVEY
ZIP WORLD
PENRHYN QUARRY
BETHEDA
ZIP WORLD
PENRHYN QUARRY
BETHEDA
DATE: 10/10/2019
SCALE: 1:500
PROJECT NO: 19/010/01
CLIENT: CURVATURE
WWW.CURVATURE.CO.UK

SCALE 1:500

SCALE 1:500

SCALE 1:500

SCALE 1:500

SCALE 1:500

SCALE 1:500

NOTES

1. This drawing must be read in conjunction with the relevant drawings and the specification.
2. All dimensions must be checked on site and confirmed with the contractor, prior to commencing fabrication or setting out. All dimensions are subject to the attention of the engineer. It is the responsibility of the contractor to ensure that the correct setting out of the work is maintained on site.

Peter Du Cane

CONSULTING ENGINEER
 CIVIL & STRUCTURAL
 2001, 2002
 14, 27th, 712th
 100, Penryn Road, Penryn, Cornwall, PL20 9AA

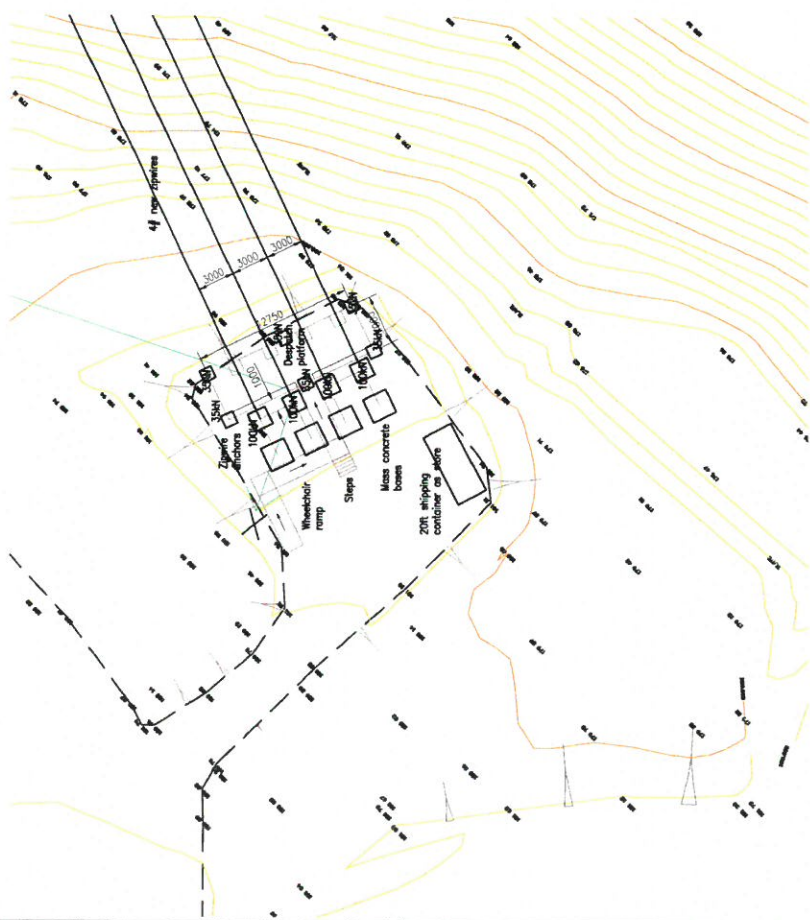
Revision	Details	Date

Client:
 Zip World
 Architect

Job title
 Penryn Redevelopment

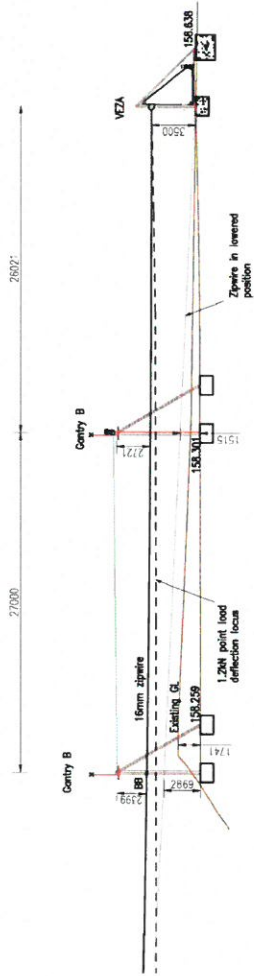
Drawing title
 Little Top

Scale: 1/200 at A1
 Date: 17/07/17
 Drawing No: 17/4834-01p



NOTES

1. This drawing must be read in conjunction with the relevant drawings and the specification.
2. All dimensions must be checked on site by the contractor. It is the responsibility of the contractor to ensure that the correct setting out of the work is achieved. It is the responsibility of the contractor to ensure that the correct setting out of the work is achieved.



See drawing 05 for gentry elevations

LITTLE BASE SECTION (at A1)

Peter Du Cane	
CONSULTING ENGINEER	
100, THE OLD MILL, PENRYN, CORNWALL, PL20 9AA	
TEL: 01751 742266	
EMAIL: peter@peterduca.com	
NO.	REVISION
1	17/02/17
2	17/03/17
3	17/03/17
4	17/03/17
5	17/03/17
6	17/03/17
7	17/03/17
8	17/03/17
9	17/03/17
10	17/03/17
11	17/03/17
12	17/03/17
13	17/03/17
14	17/03/17
15	17/03/17
16	17/03/17
17	17/03/17
18	17/03/17
19	17/03/17
20	17/03/17
21	17/03/17
22	17/03/17
23	17/03/17
24	17/03/17
25	17/03/17
26	17/03/17
27	17/03/17
28	17/03/17
29	17/03/17
30	17/03/17
31	17/03/17
32	17/03/17
33	17/03/17
34	17/03/17
35	17/03/17
36	17/03/17
37	17/03/17
38	17/03/17
39	17/03/17
40	17/03/17
41	17/03/17
42	17/03/17
43	17/03/17
44	17/03/17
45	17/03/17
46	17/03/17
47	17/03/17
48	17/03/17
49	17/03/17
50	17/03/17
51	17/03/17
52	17/03/17
53	17/03/17
54	17/03/17
55	17/03/17
56	17/03/17
57	17/03/17
58	17/03/17
59	17/03/17
60	17/03/17
61	17/03/17
62	17/03/17
63	17/03/17
64	17/03/17
65	17/03/17
66	17/03/17
67	17/03/17
68	17/03/17
69	17/03/17
70	17/03/17
71	17/03/17
72	17/03/17
73	17/03/17
74	17/03/17
75	17/03/17
76	17/03/17
77	17/03/17
78	17/03/17
79	17/03/17
80	17/03/17
81	17/03/17
82	17/03/17
83	17/03/17
84	17/03/17
85	17/03/17
86	17/03/17
87	17/03/17
88	17/03/17
89	17/03/17
90	17/03/17
91	17/03/17
92	17/03/17
93	17/03/17
94	17/03/17
95	17/03/17
96	17/03/17
97	17/03/17
98	17/03/17
99	17/03/17
100	17/03/17

Client	Zip World
Architect	Penrhyn Redevelopment
Job title	Little Base Section
Drawing title	Little Base Section
Scale	1:7500 at A1
Date	17/03/17
Drawn by	JD
Checked by	JD
Approved by	JD
Drawing No	17/4834-01p

NOTES

- 1. This drawing must be read in conjunction with the specification drawings and the specification.
- 2. All dimensions must be checked on site by the contractor, prior to commencing fabrication or setting out. All dimensions must be brought to the attention of the engineer. It is the responsibility of the contractor to ensure that all dimensions and the correct setting out of the work on site.

Peter Du Caine
CONSULTING ENGINEER
Professional Engineer
No. 07784, E.C.ENG
Peter.Du.Caine@bt.com

Revision no.	Revision details	Date

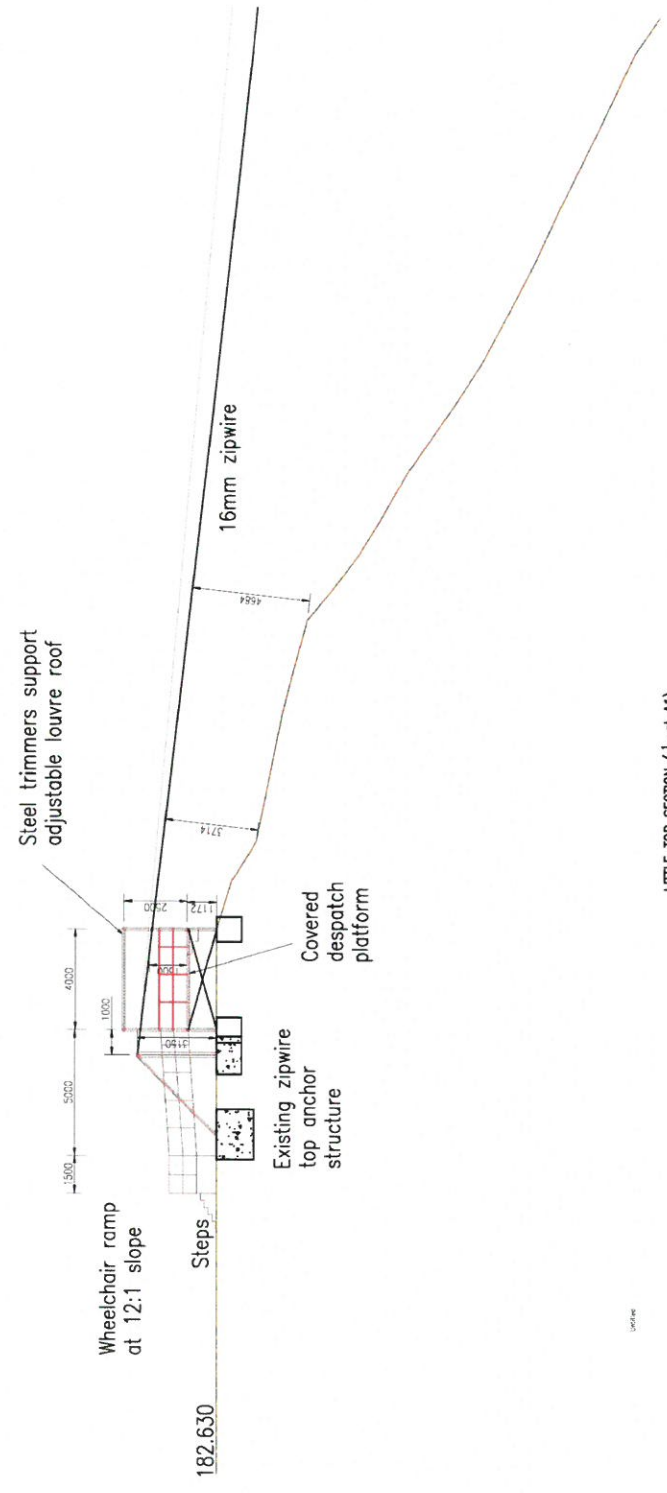
Client
Zip World
Architect

Job title
Penrhyn Redevelopment

Drawing title
Little Top Section

Scale	Date	Drawn	Check
1:2500 at A1	11/02/17		

DRAWING No 17/4834-01p



04/2/17

NOTES

1. This drawing must be read in conjunction with all other relevant drawings and the specification.
2. All dimensions must be checked on site and against drawings. Any discrepancy must be reported to the architect or setting out. All dimensions must be brought to the attention of the contractor. It is the responsibility of the contractor to ensure accuracy of dimensions and to correct setting out of the work on site.

Peter Du Cane

CONSULTING ENGINEER
 Peter Du Cane
 14, 07794 747298
 email: peter@peterduca.com

NO.	REVISION	DETAILS	DATE

Client	Zip World
Architect	
Job title	Penrhyn Redevelopment
Drawing title	Little Base

DATE	17/02/17	SCALE	1/200 or A1	SHEET	1/3
DRAWING No			17/4834-Q3P		

