



| | |
|-----------------------|--|
| Report to | Full Council |
| Date | 3 March 2022 |
| Portfolio Lead | Councillor Dafydd Meurig |
| Officer | Rhion Glyn, Assistant Head of Service, Adults, Health and Well-being |
| Subject | North Wales Population Needs Assessment Draft Report 2022 |

1 Purpose of the report

- 1.1 To provide an overview of the North Wales Population Needs Assessment 2022 which has been produced as a requirement of the Social Services and Well-being (Wales) Act 2014.

2 What is the reason for preparing this report?

- 2.1 To seek Full Council support for the approval of the North Wales Population Needs Assessment.
- 2.2 The Consultation Survey Report was submitted to the Care Scrutiny Committee on 3 February 2022, the report was received noting the comments submitted during the meeting.
- 2.3 The assessment was submitted to Cabinet on 15 February 2022, and it was approved for submission to Full Council for approval.
- 2.4 The assessment must be produced and published in the form of a report by April 2022. Work is continuing to prepare the Gwynedd population needs assessment, and it is expected to be ready by autumn 2022.

3 Recommendation

- 3.1 That Council approves the North Wales Population Needs Assessment 2022.

4 Report details

- 4.1 Section 14 of the Social Services and Wellbeing Act (2014) requires local authorities and health boards to jointly assess:
- a) The extent to which there are people in a local authority's area who need care and support

- b) The extent to which there are carers in the local authority's area who need support
- c) The extent to which there are people in a local authority's area whose needs for care and support are not being met
- d) The range and level of services required to meet the care and support needs of people in the local authority's area
- e) The range and level of services required to achieve the purposes in Section 15(2) (preventative services) in the local authority area
- f) The actions required to provide the range and level of services identified in accordance with paragraphs (d) and (e) through the medium of Welsh

4.2 The report must cover as a minimum the following themes / groups:

- Children and young people
- Older People
- Health, Physical Disability and Sensory Impairment
- Learning Disabilities (Children and Adults)
- Autism
- Mental Health
- Carers

4.3 Within the assessment, regard has also been given for secure estate, homelessness and veterans. The assessment has been guided by the requirements set out in the Code of Practice for Population Needs Assessment (PNA) and has given due regard to other duties and policies that have a significant impact on the groups listed. Each chapter contains an assessment of:

- The Welsh language (the 'active offer')
- Equalities and Human Rights
- Socio-economic considerations
- Impact of COVID-19 pandemic
- Safeguarding considerations
- Violence Against Women, Domestic Abuse and Sexual Violence
- Social Value

4.4 Whilst the PNA is a statutory requirement, this is not the main reason for undertaking the work. The PNA is a vital document that provides an evidence base to support organisations and services across the region, specifically it is to be used for strategic planning cycles underpinning the integration of services and support partnership arrangements.

4.5 Significant officer time has been involved in the production of local working papers, data analysis and research to inform the regional report. These working papers, although not published as part of the regional report, are valuable local planning documents. The key local messages are in Section 5 of this paper.

4.6 There is still a need for a local vision and plan for services in each area. Going forward the partnership would seek to continue the work of the needs assessment to ensure that assessing the needs of our populations is an ongoing process.

- 4.7 The requirement to produce an accessible, regional report in a short timescale has limited what can be included. The work has been carried out during a very challenging time due to the pressures of the pandemic. It has involved a significant effort by officers to ensure that a meaningful document was produced.
- 4.8 It should also be noted that some of the national data sources that were available when the original PNA document was prepared in 2017 are no longer collected or available.
- 4.9 The final PNA document is therefore not perfect and we recommend updating as new national data becomes available and more work is carried out locally. We will develop an on-going process to improve and update the PNA so that it remains meaningful and current. This will also help make it a more manageable process.
- 4.10 The PNA is a co-produced document and engagement led. Local and regional lead officers undertook data analysis, background literature reviews, service reviews and additional focussed local engagement work. The key issues and themes identified are based on consultation and feedback from staff, partner organisations, Public Health Wales and local Health Board colleagues, service users and the general public to identify strategic needs for care and support. This included information from existing commissioning strategies and needs assessments.
- 4.11 As such our co-production approach to the work means that we have a meaningful and informed PNA document that involved a wide variety of people, as opposed to a document created in isolation via a desk-top exercise, which has been the approach employed by some other regions of Wales.
- 4.12 A single regional report must be produced for the North Wales Region and be approved by Full Council for each of the local authority areas (Gwynedd, Ynys Mon, Conwy, Denbighshire, Flintshire and Wrexham) and the Board of the Local Health Board.
- 4.13 The report must be published no later than April 2022. The report will be published on all local authority websites, the health board website and the regional partnership website in both English and Welsh. A copy of the report will be submitted to Welsh Ministers. The Full Regional PNA is a lengthy document and summary reports, children and young people and other accessible formats will also be made available. These will be produced once the full PNA has been finalised and these will be published along with the full PNA in order to make the content and key messages more accessible and digestible.

5. Key Local Messages from the Population Needs Analysis/Key Messages for the Council

- 5.1 The Gwynedd population needs assessment will provide more detailed information on matters which have been highlighted in the data presented in the assessment. In addition to this, attention should be drawn to the following:

- The percentage of Welsh speakers in Gwynedd is the highest in north Wales by 10% (76.4%) (Table 9). It is considered that the demand for workers who can provide services through the medium of Welsh is being better met in Gwynedd in comparison with other areas
 - Gwynedd is the only county where an increase is seen between 2020 and 2040 in the predicted number of children with a limiting long-term illness (Table 12). This can lead to an additional need for support for parents who are carers
 - Gwynedd saw a significant increase between 2015 and 2020 in the number of children in foster care (Table 26)
 - Figure 24 shows that it is young people between 11 and 16 in Gwynedd who have the highest mental well-being scores in North Wales (24.5) and it is statistically significantly higher than the average for Wales (24). Higher scores indicate higher positive mental wellbeing
 - Engagement with young people aged 11 to 25 about how youth services in Gwynedd support their emotional and mental wellbeing found that young people were of the opinion that there is a lack of awareness, understanding and support for young people's mental health in general. The youth services provided valuable support for those who had been involved, but it needed to be promoted better (p69)
 - Gwynedd has the highest proportion of older people (252 per 100,000 of the population) on the learning disability register (p161)
 - Learning disability providers commented on how well they are working with other agencies and were grateful for the recent support they received from social services in Gwynedd (p167)
- 5.2 As detailed above the local working papers and the full PNA document will be used locally to inform future service planning, particularly in post pandemic recovery. It will be a key document to consider in the development of the Market Stability Report as well as informing the local Wellbeing Plan and also will feed in to other documents, including the Community Strategy, Tackling Poverty plans and Housing/Supporting People plans.

6 What consultations have been carried out?

- 6.1 The North Wales Social Care and Wellbeing Services Improvement Collaborative set up a regional steering group to lead the work for the technical, engagement, data and other theme-based groups to lead on specific tasks. Membership of the groups is from each North Wales local authority, Betsi Cadwaladr University Health Board (BCUHB), Public Health Wales and other parties with an interest in the needs assessment such as officers for the PSBs. A governance structure is attached in appendix 1.
- 6.2 Engagement for the population assessment included: a questionnaire for organisations that asks for their views and evidence; a facilitator's guide for

partners to use to run discussion groups with service users; and workshops with citizens. A total of 350 questionnaire responses were received to the regional survey, which provided rich qualitative data to inform the PNA. In addition to the survey we also collated and used evidence from consultation and engagement activities carried out throughout the region by partners. These findings are available on the [regional collaboration engagement database](#), which is an ongoing project to improve the coordination of engagement activities across the region and enable better use of the findings. A full consultation report is also available and is appended to the main report.

- 6.3 A stakeholder map was produced and reviewed listing all the population groups who may need care and support services to ensure that as many people as possible had opportunity to have their say. This includes engagement with hard to reach groups.

7 How does the decision contribute to the corporate priorities?

- 7.1 The PNA contributes to regional and local level strategic planning cycles, consequently this will support the local authorities corporate priorities that are linked to the health and social care needs of its resident population.
- 7.2 In addition to the requirement to assess the care and support needs of the population there is a further requirement for local authorities and health boards to assess the sufficiency of the care and support provide to meet the needs of the population in the form of a Market Stability Report. This includes an assessment of the stability of the market for regulated care and support services. Following the publication of the PNA a Market Stability Report will be prepared and published in 2022.
- 7.3 A Well-being Assessment must be produced as a requirement of the Well-being of Future Generations (Wales) Act 2015 by each Public Service Board in a similar timescale to the Population Assessment. The population assessment considered the care and support needs of the population while the Well-being Assessment covers prosperity, health, resilience, equality, vibrant culture, global responsibility and cohesive communities. There is overlap between the two so the project team for the PNA are liaising with officers for the PSBs about the progress of the needs assessment and Well-being assessments and sharing information where necessary.
- 7.4 As well as informing our local plans, the next phase of the project will also involve using the population assessment to develop an area plan for the region. Future work on the area plan may involve further research and consultation to explore priority areas in more depth before agreeing which areas to prioritise for regional work. The area plan is to be developed and published in 2023.

8 Resource implications / Chief Finance Officer Statement

- 8.1 The North Wales Social Care and Wellbeing Services Improvement Collaborative has funded the regional project which has included a part-time project manager to support the development of the PNA. Associated costs, such as translation and for specialist engagement was also funded by the partnership.

- 8.2 There has been a cost to the local authorities, BCUHB and Public Health Wales in staff time and resource to support the project. This includes staff to carry out engagement work with the public, service users, staff and elected members and staff to support the analysis and writing of the report. The majority of this work took place between April 2021 and December 2021 for the PNA.
- 8.3 Going forward the PNA will identify regional and local priorities, it may be the case that these priorities require some level of investment at either regional or local level.

9 Risks and Impact Assessment

- 9.1 That it will not be possible gain approval from all six councils and the Board of BCUHB in time to publish by April 2022. To mitigate the project team, aim consult as widely as possible before the approval process.
- 9.2 Welsh Government have removed the requirement for an EQIA on the needs assessment as a report in itself. The needs assessment is inclusive of equalities, human rights and socio-economic analysis and research pertaining to each of the groups included within the needs assessment.

| Background papers | Location | Website info. |
|---|----------|---|
| Social Services and Well-being (Wales) Act 2014: Code of Practice | | http://www.ccwales.org.uk/codes-of-practice-and-statutory-guidance/ |

Views of statutory officers

Monitoring officer:

The report notes that this Population Needs Assessment has been prepared to meet a statutory requirement stemming from the Social Services and Wellbeing (Wales) Act 2014 to prepare a joint plan with the Health Board. The statutory guidance in relation to Part 2 of the Act also directs the Authority to prepare a joint plan regionally with other relevant authorities as well as placing the document before the full Council for approval.

Head of Finance:

Apart from the statutory requirement to provide this document, a comprehensive assessment of demand for services now and into the future is essential if we are to continue to make sure that our resources have been directed to the right place. Of course, that does not mean that it will be possible to fund all aspects as we would like and the need to prioritise – and at times make difficult decisions – will undoubtedly continue.

I am satisfied that this assessment does not create a spending commitment in itself, but will be an important and useful tool in planning for the future. Any bid for additional funding will need to be subject to the Council's usual arrangements.

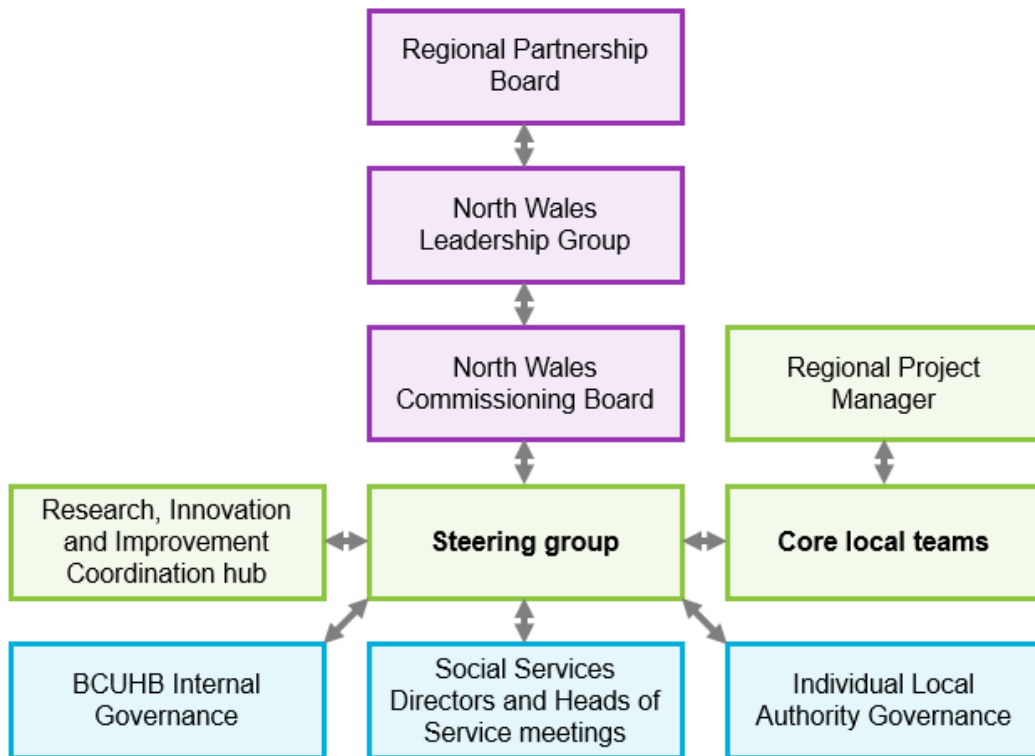
Appendices:

Appendix 1: References

Appendix 2: Map of evidence

Appendix 3: Consultation Overview Report

North Wales Population Assessment Governance structure



Project Management structure

