

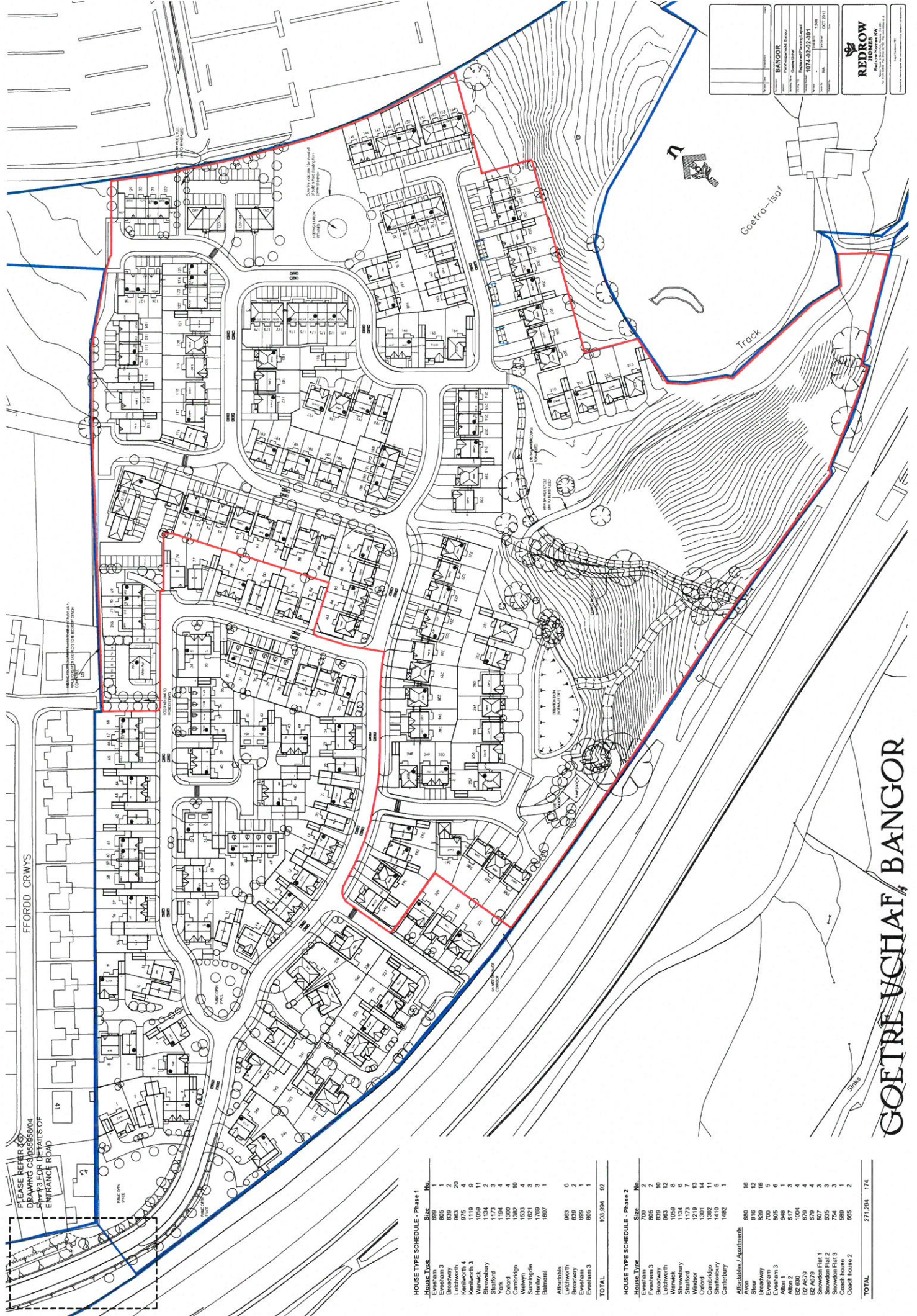


Rhif y Cais / Application Number : C15/1115/25/LL

Cynllun lleoliad ar gyfer adnabod y safle yn unig. Dim i raddfa.  
Location Plan for identification purposes only. Not to scale.







BANDOR	
Project No.	1074.02.02.01
Client	Redrow Homes Ltd
Site No.	1000
Scale	1:500
Date	2017

**REDROW HOMES**  
 Building Homes for the Future

PLEASE REFER TO DRAWING C405556/04 Rev 3 FOR DETAILS OF ENTRANCE ROAD

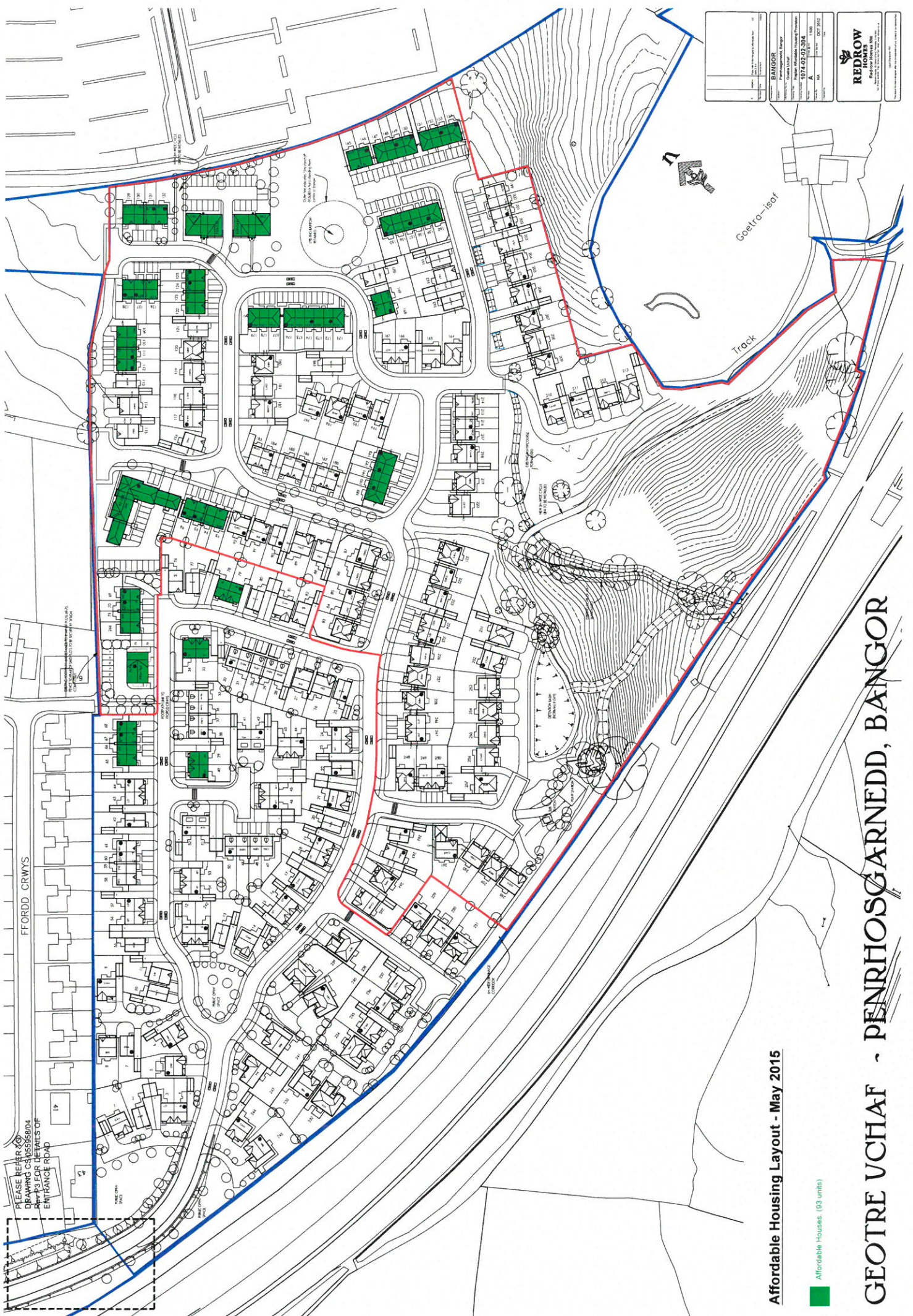
**HOUSE TYPE SCHEDULE - Phase 1**

House Type	Size	No.
Evesham	699	1
Evesham 3	805	1
Leibworth	963	20
Leibworth 4	975	4
Kenilworth 3	1119	9
Kenilworth 2	1134	2
Shrewbury	1173	3
Stanford	1194	4
York	1382	10
Cambridge	1533	4
Walsyn	1621	3
Sunningdale	1621	3
Bathurst	1807	1
Alfordville	905	6
Brookway	839	2
Evesham	699	1
Evesham 3	805	1
<b>TOTAL</b>	<b>103,994</b>	<b>82</b>

**HOUSE TYPE SCHEDULE - Phase 2**

House Type	Size	No.
Evesham	700	2
Evesham 3	805	2
Brookway	839	10
Worcester	1050	8
Shrewbury	1134	6
Stanford	1173	6
Stanford	1301	13
Oxford	1301	14
Cambridge	1382	11
Shillington	1410	5
Cambridge	1482	1
<b>Allocations / Apartments</b>		
Sven	650	16
Brookway	816	12
Brookway	839	16
Evesham	700	5
Evesham 3	805	5
Alfordville	804	1
Allon 2	617	3
Allon 1	1004	4
B2 630	1004	4
B2 630	1004	4
B2 630	1004	4
Snowdon Flat 1	507	3
Snowdon Flat 2	635	3
Snowdon Flat 3	635	3
Snowdon Flat 4	635	3
Coach House 2	568	2
Coach House 1	665	2
<b>TOTAL</b>	<b>271,204</b>	<b>174</b>

**GOETRE VCHAF BANGOR**



<b>BANGOR</b> Bangor Housing Association 074 67 07 304 074 67 07 304 074 67 07 304 074 67 07 304	
<b>REDROW HOMES</b> Redrow Homes Ltd 01747 822222 01747 822222 01747 822222	

Affordable Housing Layout - May 2015

Affordable Houses (93 units)

# GEOTRE VCHAF - PENRHOSGARNEDD, BANGOR

FFORDD CRWYS

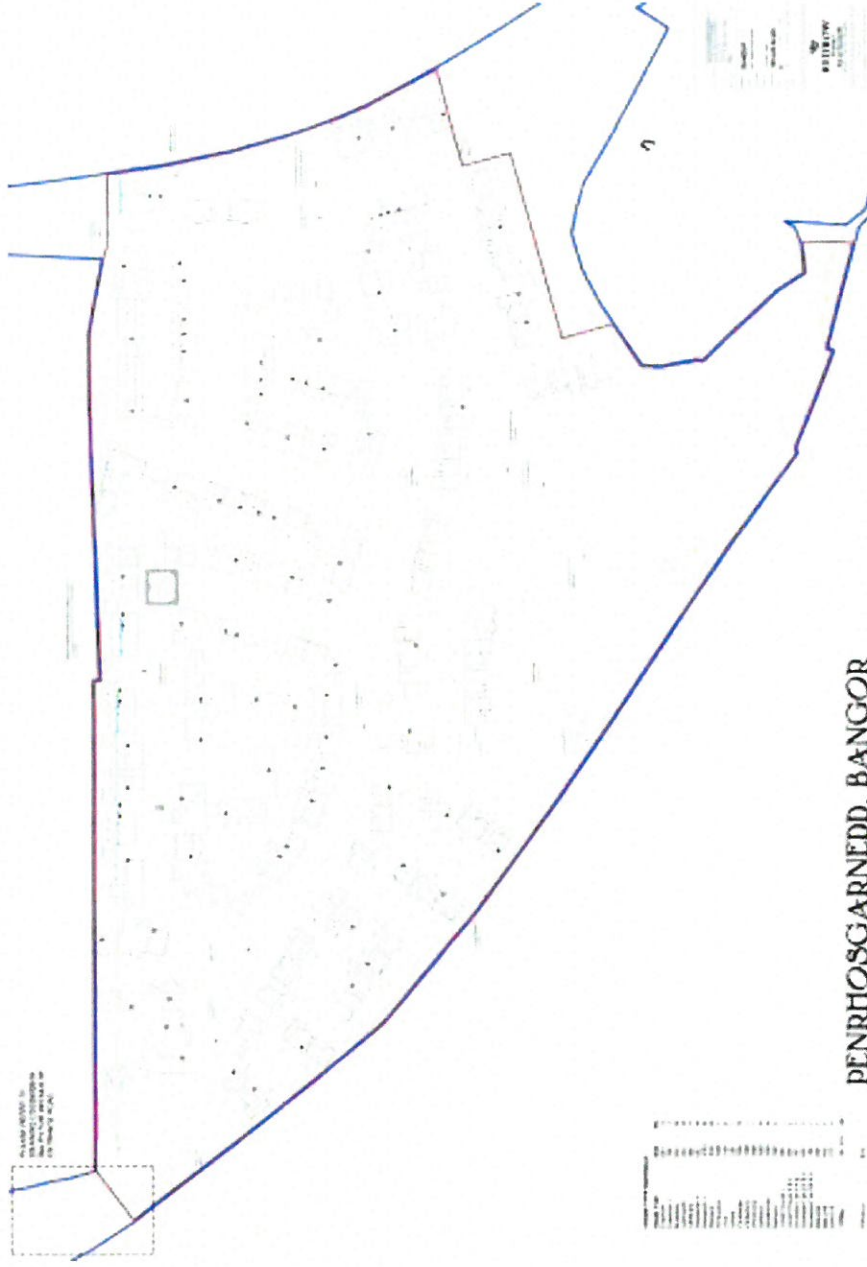
Goetro-isaf  
Track

PLEASE REFER TO  
DRAWING CS155565004  
REV 13 FOR DETAILS OF  
ENTRANCE ROAD



# LAND SOUTH OF PENRHOS ROAD, BANGOR

## 7.0 Previously Approved Layout, Ref: C12/1347/25/LL



PENRHOSGARNEDD, BANGOR



# LAND SOUTH OF PENRHOS ROAD, BANGOR

## 9.0 House Types



**Broadbury**  
144 SQ. FT. 4 BEDROOMS



**Everthorn**  
144 SQ. FT. 4 BEDROOMS



**Leitchworth**  
95 SQ. FT. 3 BEDROOMS



**Shrewsbury**  
114 SQ. FT. 4 BEDROOMS



**Letchworth**  
95 SQ. FT. 3 BEDROOMS



**Shrewsbury**  
114 SQ. FT. 4 BEDROOMS



**Warwick**  
109 SQ. FT. 3 BEDROOMS



**Sustrord**  
114 SQ. FT. 4 BEDROOMS



**Warwick**  
109 SQ. FT. 3 BEDROOMS



**Sustrord**  
114 SQ. FT. 4 BEDROOMS



**Oxford**  
156 SQ. FT. 4 BEDROOMS



**Windzor**  
118 SQ. FT. 4 BEDROOMS



**Oxford**  
156 SQ. FT. 4 BEDROOMS



**Windzor**  
118 SQ. FT. 4 BEDROOMS



**Shrewsbury**  
114 SQ. FT. 4 BEDROOMS



**Shrewsbury**  
114 SQ. FT. 4 BEDROOMS



**Shrewsbury**  
114 SQ. FT. 4 BEDROOMS



**Cambridge**  
156 SQ. FT. 4 BEDROOMS



**Cambridge**  
156 SQ. FT. 4 BEDROOMS



**Canterbury**  
146 SQ. FT. 4 BEDROOMS



**Shrewsbury**  
114 SQ. FT. 4 BEDROOMS



**Shrewsbury**  
114 SQ. FT. 4 BEDROOMS

The house type mix for the proposed development is shown above and illustrates the high quality housing Redrow believe is the 'best fit' for the scheme. The Arts and Craft styling of the facades in a modern context is timeless and extremely popular. This design styling creates houses that will sit well in the setting of this development alongside/opposite other house style in the local vernacular.

