



Wales Pension Partnership Business Plan 2024-2027



Contents

Introduction	3
About the Wales Pension Partnership	3
Governance	4
Risk Management	6
Objectives	7
Beliefs	8
Policies	9
Work Plan	10
Training Plan	12
Budget	13
Investments & Performance	14
Contact Details	16

Introduction

This is the business plan for the Wales Pension Partnership ('WPP'), the business plan details the WPP's priorities and areas of focus for, 2024/25, 2025/26 and 2026/27. The business plan is constantly monitored and is formally reviewed and agreed every year. The purpose of the business plan is to:

- Explain the background and governance structure of the WPP
- Outline the priorities and objectives of the WPP over the next three years
- Outline the financial budget for the relevant Business Plan period
- Summarise the WPP's Investments & Performance Objectives

About the Wales Pension Partnership

Established in 2017, the WPP is a collaboration of the eight LGPS funds (Constituent Authorities) covering the whole of Wales and is one of eight national Local Government Pension pools. We have a long, successful history of collaboration, including examples that pre-date the Government's pooling initiative. We are proud of our unique identity as a Pool – our Constituent Authorities represent and span the entirety of Wales. Being democratically accountable means, we provide the best of strong public sector governance and transparency.

Our operating model is designed to be flexible and deliver value for money. We appointed an external fund Operator and make use of external advisers to bring best of breed expertise to support the running of the Pool, this includes Hymans Robertson who have been appointed as the WPP's Oversight Advisor. The Operator is Waystone Management (UK) Limited (Waystone) and they have partnered with Russell Investments to deliver effective investment management solutions with the aim of achieving strong net of fee performance for all the Constituent Authorities. We have a shared vision and agreement on the means and pace at which this vision will be achieved. The eight LGPS Funds (Constituent Authorities) of the Wales Pension Partnership are:



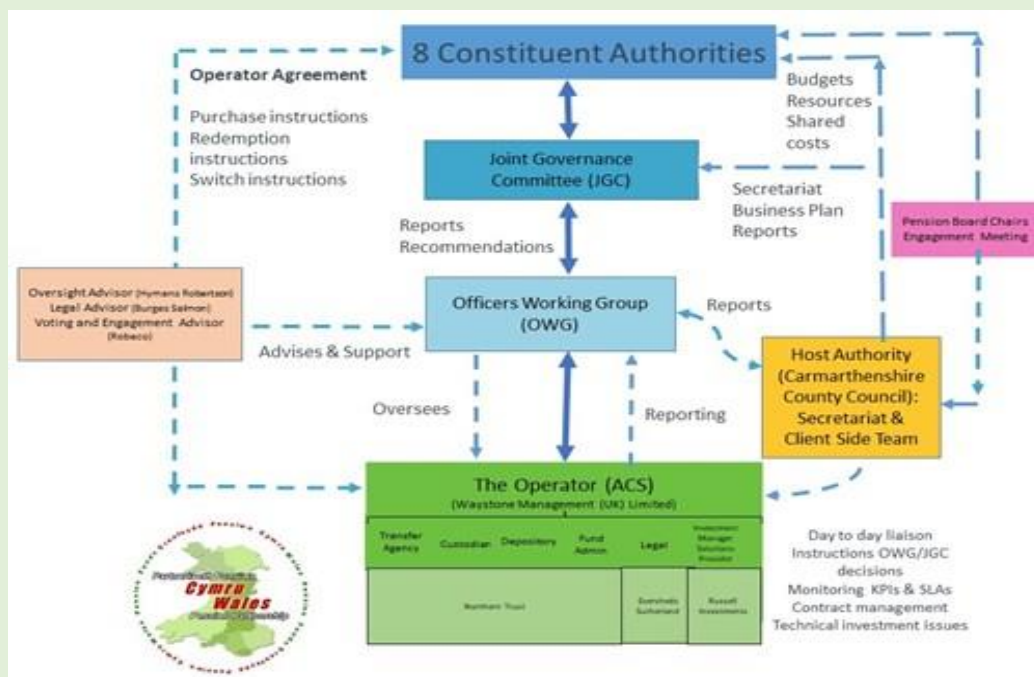
Governance

The WPP is responsible for ensuring that its business is conducted in accordance with regulation and guidance. We must also ensure that: public money is safeguarded and properly accounted for, used economically, efficiently and effectively to ensure value for money. We also strive for continuous improvement and to conform with industry best practice.

The WPP details how it deals with all aspects of Governance through its Inter Authority Agreement (IAA), which defines the standards, roles and responsibilities of the Constituent Authorities, its Members, Committees and Officers. The IAA includes a Scheme of Delegation outlining the decision-making process, taking into account the relevant legislation. In line with its belief that good governance should lead to superior outcomes for stakeholders, the WPP has put in place a robust governance structure, which has been designed to:



The diagram below shows WPP's governance structure:



The Constituent Authorities sit at the top of the WPP's governance structure. They retain control of all activity carried out by the WPP and remain responsible for approving this Business Plan, which outlines the WPP's budget and workplan, as well as its beliefs and objectives. The Constituent Authorities are heavily involved in all aspects of the WPP's governance structure, while the WPP's Joint Governance Committee and Officers Working Group are comprised respectively of elected councillors, scheme member representative and officer representatives from the Constituent Authorities.

The WPP believes in being open and transparent as well as regularly engaging with its key stakeholders. As such the WPP ensures the meetings of the Joint Governance Committee are accessible to the public via a live webcast stream. Meeting papers are also made publicly available. Local Pension Board engagement days are also held regularly as a means of fostering stakeholder engagement. The WPP recognises the importance of all of its stakeholders to reflect this the WPP has put in place an Engagement Protocol Framework, this is carried out via the following engagement mechanisms:

Engagement mechanisms and Frequency:

- | | |
|---|----------------|
| • Strategic Relationship Review meeting | Bi-Annual |
| • JGC Engagement | Quarterly |
| • Manager Performance Meetings/ Calls | Quarterly |
| • Training Events | Quarterly |
| • OWG Engagement | Quarterly |
| • Bi-weekly meetings | Every 2 weeks |
| • Pension Fund Committees | Annual |
| • Manager Engagement Days | Annual |
| • Member Communications | Annual |
| • Pension Board Engagement | Every 6 months |
| • Engagement via the website & LinkedIn | Continuous |

Risk Management

The Wales Pension Partnership ('WPP') recognises that it faces numerous risks which, if left unmanaged, can limit the WPP's ability to meet its objectives and to act in the best interest of its stakeholders and beneficiaries. However, the WPP also understands that some risks cannot be fully mitigated and that in these instances' risks need to be embraced through active and effective management.

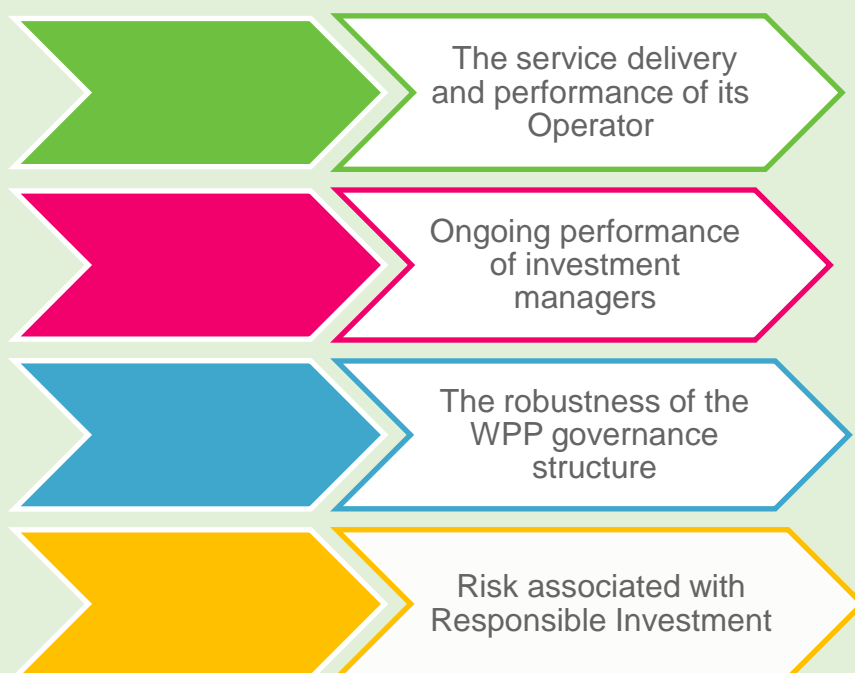
Risk management is a critical element of WPP's commitment to good governance, the WPP has developed a structured, extensive and robust risk strategy. This strategy will be embedded into the WPP's governance framework to ensure better decision-making, improved outcomes for stakeholders and greater efficiency.

The WPP's risk strategy seeks to identify and measure key risks and ensure that suitable controls and governance procedures are in place to manage these risks. The WPP believes that risks are fluid in nature and that the severity and probability of risks can change rapidly and without warning. To reflect this belief, the WPP's Risk Policy has been developed in such a way that risks can be anticipated and dealt with in a swift, effective manner to minimise potential loss or harm to the WPP and its stakeholders.

To deliver on its objectives, the WPP needs to carry out activities or seize opportunities that subject it to risk. The extent to which the WPP is able to effectively balance risk and return will depend on the success of its Risk Policy. It is critical that prior to making decisions the WPP understands the associated risks and considers the means by which these risks could be managed.

The greatest risk to the WPP's continued operation is its ability to deliver on its primary objectives. The WPP's Business Plan is an additional means through which the WPP will give special recognition to risks that pose a material threat to the delivery of its objectives and the actions required to manage these risks.

During the course of this business plan the WPP will seek to develop mechanisms, frameworks and process for managing the following key risks:



Objectives

The WPP is proud to represent the eight Constituent Authorities and recognises its duty to ensure the needs and requirements of all stakeholders are met. The WPP, through consultation with all eight Constituent Authorities, has formulated a list of primary objectives these can be summarised as follows:

- To provide pooling arrangements which allow individual funds to implement their own investment strategies (where practical)
- To achieve material cost savings for participating funds while improving or maintaining investment performance after fees
- To put in place robust governance arrangements to oversee the Pool's activities.
- To work closely with other pools in order to explore the benefits that all stakeholders in Wales might obtain from wider pooling solutions or potential direct investments
- To deliver an investment framework that achieves the best outcomes for its key stakeholders; the Constituent Authorities. The Constituent Authorities will be able to use this framework to deliver the best outcomes for their Scheme Members & Employers
- To embed the delivery of long-term, sustainable investment outcomes into decision making, through capital allocation, the ongoing scrutiny of asset managers, and the exercise of the rights and responsibilities that arise as asset owners.

The eight Constituent Authorities recognise that their strength derives from their shared beliefs and their ability to work together to deliver on their unified objectives for the benefit of all WPP stakeholders.

Beliefs

The WPP's Beliefs reflect the collaborative nature and shared values of the Constituent Authorities, they are as follows:

- The WPP's role is to facilitate and provide an investment pooling platform through which the interests of the Constituent Authorities can be implemented
- Good governance should lead to superior outcomes for the WPP's stakeholders
- Internal collaboration between the Host and Constituent Authorities is critical to achieving the WPP's objectives. External collaboration may also be beneficial in delivering cost savings and better outcomes for stakeholders
- Responsible Investment and effective Climate Risk mitigation strategies, alongside consideration and evidential management of broader Environmental, Social and Governance issues, should result in better outcomes for the WPP's stakeholders
- Effective internal and external communication is vital to achieving the WPP's objectives
- External suppliers can be a cost-effective means of enhancing the WPP's resources, capabilities and expertise
- Fee and cost transparency will aid decision making and improve stakeholder outcomes
- Continuous learning, innovation and development will help the WPP and its Constituent Authorities to evolve
- Flexible approach to the WPP pool structure and implementation methods will enable the WPP pool to adapt in future and continue to meet the needs of its stakeholders.

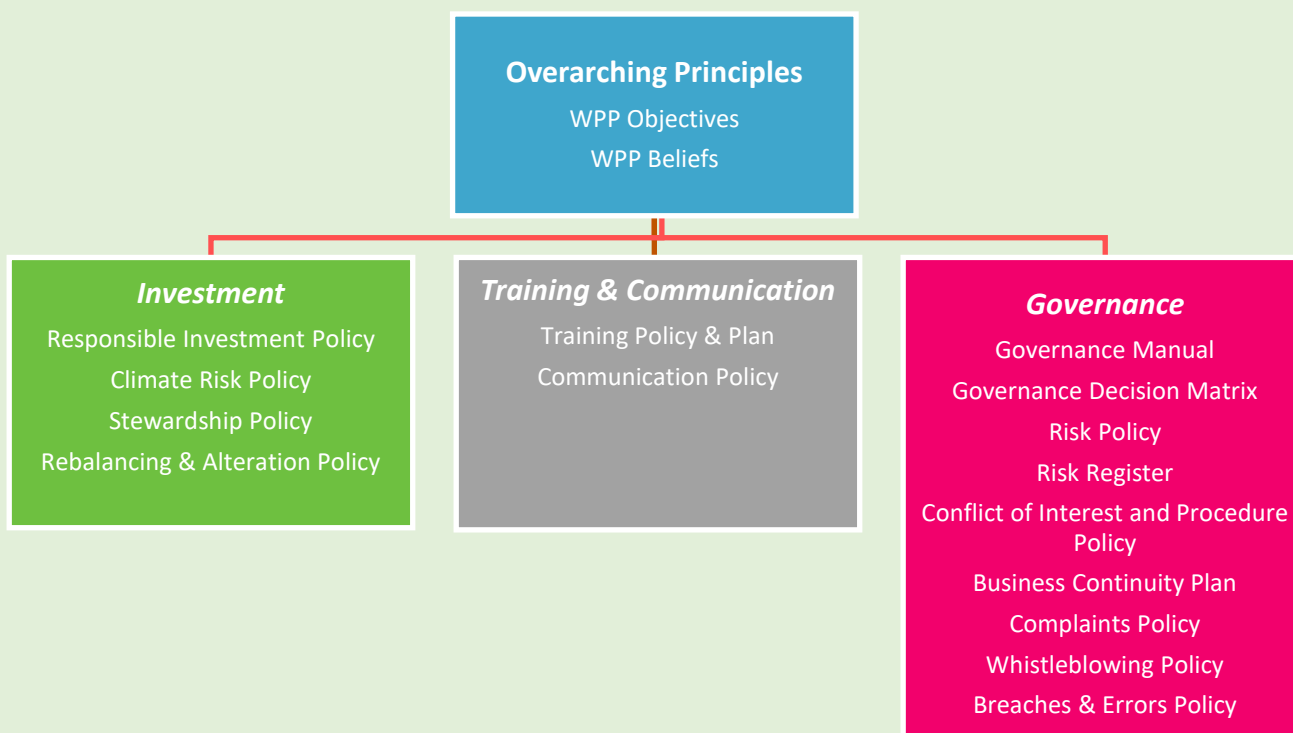
The WPP's beliefs are the foundation for WPP's governance framework and have been used to guide all of the WPP's activities and decision making, including its objectives and policies.

Policies

The WPP believes that good governance should lead to superior outcomes for the WPP’s stakeholders. In recognition of this belief, the WPP, in consultation with the Constituent Authorities, has developed a robust governance structure and framework and a set of governing policies. In all instances the WPP’s policies and procedures have been developed to either complement or supplement the existing procedures and policies of the Constituent Authorities. The WPP understands the importance of formulating and codifying its policies and procedures. This process allows the WPP and the Constituent Authorities, to:



The WPP’s key policies, registers and plans are listed below and can be found on the WPP website.



The WPP’s policies are reviewed on a regular basis and the WPP will continually assess whether any additional policies, registers or plans are required. The policies play a vital role in the WPP’s governance arrangements and have been formulated with the sole purpose of providing a codified framework which will ensure that the WPP achieves its objectives in an effective and transparent means.

Work Plan

The table below shows key priorities and objectives that the WPP aims to complete over the next three years. The workplan has been broken down into a number of key sections which are all vital to the continued success of the WPP

- **Governance** - The WPP believes that good governance leads to better outcomes for its stakeholders, as such it will further develop its governance framework and carry out ongoing reviews of its existing governance documents and structure.
- **Ongoing Sub-Fund development** – To date the WPP has pooled c70% of its assets and a number of other sub funds are in the process of being developed. The WPP will continue to consult with the Constituent Authorities to ensure that all suitable assets are pooled.
- **Operator Services** - The Operator, alongside the third parties that it employs on behalf of the WPP, are critical to the ongoing activities of the WPP, therefore service delivery of the Operator and third-party suppliers are crucial. The current operator contract comes to an end in December 2024 and the procurement process for the new operator contract is underway.
- **Investments and Reporting** - The WPP recognises the importance of ensuring that existing investment solutions remain optimal and aligned to Constituent Authority requirements, while also delivering the investment return expectations of the Constituent Authorities. The WPP will continue to deliver on its reporting requirements covering areas such as investment performance, risk, Stewardship activities, Responsible Investment and Climate, and will develop further reporting, as and when required.
- **Communication and Training** - The WPP wants to ensure that internal stakeholders and external parties are aware of the WPP's progress and publishes numerous report and updates to ensure that it proactively communicates its progress to stakeholders. These can all be found on the WPP website.
- **Resources, Budget and Fees** - The WPP recognises that insufficient resources pose a significant risk to its ability to deliver an investment framework that achieves the best outcomes for its key stakeholders, the WPP carries out a number of reviews to guarantee that it has suitable resources to deliver on this commitment.

Work to be completed	2024 - 2025	2025 - 2026	2026 - 2027
Governance			
Oversight Advisor procurement process	✓		
Voting & Engagement Service provider procurement process	✓		
Legal Services provider procurement process		✓	
Annual review of WPP's policies and plans	✓	✓	✓
Quarterly reviews of the Risk Register	✓	✓	✓
Respond to any pooling related consultations and carry out any necessary changes as a result of consultation outcomes	✓	✓	✓
Ongoing Sub-Fund development			
Launch the real estate investment programmes	✓		
Launch additional Private Market vintages	✓	✓	✓

Consideration of WPP's Levelling up / impact requirements	✓	✓	✓
Consultation with CAs on need for further Sub-Funds, review and develop, as required	✓	✓	✓
Consideration of Local Investment opportunities	✓	✓	✓
Operator Services			
Complete Operator contract procurement process and implement new operator contract	✓		
Operator and Sub-Fund governance Oversight	✓	✓	✓
Investments and Reporting			
Develop & Implement Private Markets reporting	✓		
Climate-related / TCFD reporting	✓	✓	✓
Stewardship Code reporting	✓	✓	✓
Consider additional reporting that demonstrates WPP's commitment to Responsible Investment	✓	✓	✓
On-going Sub-Fund responsible investment and climate risk performance reporting, scrutiny and challenge	✓	✓	✓
Annual performance review of WPP Sub-Funds	✓	✓	✓
Review of Russell Investment's service delivery in delivering WPP's objectives across Sub-Funds	✓		
On-going engagement with Constituent Authorities regarding ESG / RI standards and their climate ambitions	✓	✓	✓
Communication and Training			
Formulation of WPP's Annual Responsible Investment Progress Report	✓	✓	✓
Formulation of WPP's Annual Training Plan	✓	✓	✓
Formulation of WPP's Annual Update	✓	✓	✓
Formulation of WPP's Annual Report	✓	✓	✓
Resources, Budget and Fees			
Annual review of resources and capacity	✓	✓	✓
Formulation of Annual WPP Budget	✓	✓	✓
Review and Monitoring of Operator / external provider fees	✓	✓	✓

Training Plan

It is best practice for WPP personnel to have appropriate knowledge and understanding of:

- the regulations and markets relating to pensions;
- the pooling of Local Authority Pension Schemes; and
- relevant investment opportunities.

The WPP's training plan is designed to supplement existing Constituent Authority training plans. Local level training needs will continue to be addressed by Constituent Authorities while the WPP training plan will offer training that is relevant to the WPP's pooling activities.

WPP personnel should obtain a degree of knowledge and understanding that ensures they are able to carry out their duties associated with the WPP. WPP personnel should also be aware of the WPP's framework, beliefs, policies, governance matrix, the decision-making process and decision logging process.

To aid WPP personnel, the Host Authority will arrange quarterly training sessions which will cover major areas such as investments, administration, regulation requirements, government guidance and market developments. The WPP's training events will primarily focus on meeting the training needs of members of the OWG and JGC, however Constituent Authorities are encouraged to invite Pension Committee Members, as well as Pension Board Representatives if they believe that the training would be beneficial to these individuals.

We have set out below a list of training topics which the Host Authority will arrange training for during the 2024/25 financial year. WPP's training topics are based on current WPP topical priorities and from an analysis of the WPP training requirements questionnaire/ assessment responses, completed by members of the Joint Governance Committee ('JGC') and Officers Working Group ('OWG').

Product Knowledge and Cyber Security:

- WPP Pooled Investments
- Overview of cyber security and consideration for WPP

Policies:

- Responsible Investment Policy
- Climate Risk Policy
- Stewardship Policy

Responsible Investment (RI):

- Net Zero journey planning
- Climate Metrics

Market Understanding & Regulatory Requirements:

- Progress of other LGPS pools & Collaboration Opportunities
- Any new regulatory / guidance developments

Budget

The table below outlines the WPP's budget for the next three years.

	Forecast 2023-24 outturn	2024-25	2025-26	2026-27
	£'000	£'000	£'000	£'000
Host Authority *	173	231	239	245
External Advisors *	1,559	1,411	1,435	1,541
TOTAL to be recharged	1,732	1,642	1,674	1,786
Operator Services **	36,079	40,734	45,705	50,231
Allocator **	1,796	7,006	7,016	7,302
TOTAL to be deducted from the NAV	37,875	47,740	52,721	57,533

**Host Authority and External Advisor costs are to be funded equally by all eight of the WPP's Constituent Authorities and these will be recharged on an annual basis.*

***Operator / Allocator Services costs are based on each Constituent Authority's percentage share of WPP assets and are deducted directly from the Net Asset Value (NAV) of the Constituent Authority's assets.*

Investments & Performance

The WPP's Constituent Authorities have total assets of circa £22.5bn (as at 31 March 2023). The Constituent Authorities' passive investments are effectively within the Pool but are held by the respective WPP authorities in the form of insurance policies.

The OWG receives quarterly, six monthly and annual performance reports, the group reviews and challenges the performance of Investment Managers on behalf of the WPP. The WPP hosts annual manager engagement days, which are used to challenge managers and to facilitate engagement with Constituent Authority Pension Committee and Board Members and the WPP's Investment Managers. The Constituent Authorities also carry out their own analysis of WPP's investment performance at local level, this will include manager attendance at Pension Committees.

Hymans Robertson undertake a periodic review of all WPP sub-funds, and the results are presented to both the OWG and JGC. The existing sub-funds are outlined below.

Equity Sub-Funds



Sub Fund	Performance Benchmark	Participating Funds	Underlying Investment Managers	Launch Date	Review Date
Global Growth	MSCI ACWI ND	RCT, Dyfed, Gwynedd, Cardiff and Powys	Baillie Gifford, Veritas and Pzena	Feb 19	Nov 21
Global Opportunities	MSCI ACWI ND	Swansea, Torfaen, Gwynedd, RCT and Cardiff	Morgan Stanley, Numeric, Sanders, Jacobs Levy, SW Mitchell, Nissay, Intermede and Oaktree	Feb 19	Nov 21
UK Opportunities	FTSE All Share	Cardiff and Torfaen	Baillie Gifford, Ninety-One, J O Hambro, Liontrust and Fidelity	Sept 19	April 23
Emerging Markets	MSCI Emerging Markets ND +1.5%	Cardiff, Clwyd, Gwynedd, Powys and Torfaen	Artisan, Bin Yuan, Barrow Hanley, Axiom, Numeric and Oaktree	Oct 21	March 24
Sustainable Active Equity	MSCI ACWI ND	Cardiff, Clwyd, Dyfed, Gwynedd, Powys, RCT, Swansea and Torfaen	Sparinvest, Mirova, Neuberger Berman, Wellington and Artemis	June 23	Planned for 2025

Fixed Income Sub-Funds

Absolute Return Bond Fund

Managed by Russell Investments

Global Government Bond Fund

Managed by Russell Investments

Multi-Asset Credit Fund

Managed by Russell Investments

Global Credit Fund

Managed by Russell Investments

UK Credit Fund

Managed by Waystone Management (UK) Limited

Sub Fund	Performance Benchmark	Participating Funds	Underlying Investment Managers	Launch Date	Review Date
Global Credit	Bloomberg Barclays Global Aggregate Credit Index (GBP Hedged)	Cardiff, Dyfed, Gwynedd, Powys and Torfaen	Western, Metlife, Fidelity and Robeco	July 20	April 23
Global Government	FTSE WGBI Index (GBP Hedged)	Cardiff and Torfaen	Bluebay and Colchester	July 20	April 23
Multi-Asset Credit	3 Month GBP SONIA plus 4%	Cardiff, Clwyd, Gwynedd, Powys, and Swansea	ICG, Man GLG, BlueBay, Barings and Voya	July 20	March 24
Absolute Return Bond Fund	3 Month GBP SONIA plus 2%	Gwynedd, Powys and Swansea	Wellington, Aegon and Insight	Sept 20	March 24
UK Credit Fund	ICE BofA ML Eur-Stg plus 0.65%	RCT	Fidelity	July 20	March 24

Private Markets

Infrastructure – closed ended

Managed by GCM Grosvenor

Participating Funds: Clwyd, Dyfed, Gwynedd, Powys, RCT, Swansea and Torfaen

Infrastructure – open ended

Managed by CBRE, IFM and Octopus

Participating Funds: Cardiff, Gwynedd, Powys, Swansea, Torfaen

Private Credit

Managed by Russell Investments

Participating Funds: Cardiff, Clwyd, Dyfed Gwynedd, Powys, Swansea and Torfaen

Private Equity

Managed by Schroders Capital

Participating Funds: Cardiff, Clwyd, Gwynedd, Powys and Swansea

Contact Details

If you require further information about anything in or related to this business plan, please contact the Wales Pension Partnership:

Postal Address - Wales Pension Partnership

Carmarthenshire County Council

Treasury & Pension Investments Section

County Hall

Carmarthen

SA31 1JP

E-mail - WalesPensionPartnership@carmarthenshire.gov.uk

Telephone - (01267) 224136

Further information on the WPP and ongoing updates on the WPP's progress can be found on the website and LinkedIn page.

The website can be found here:

<https://www.walespensionpartnership.org/>

