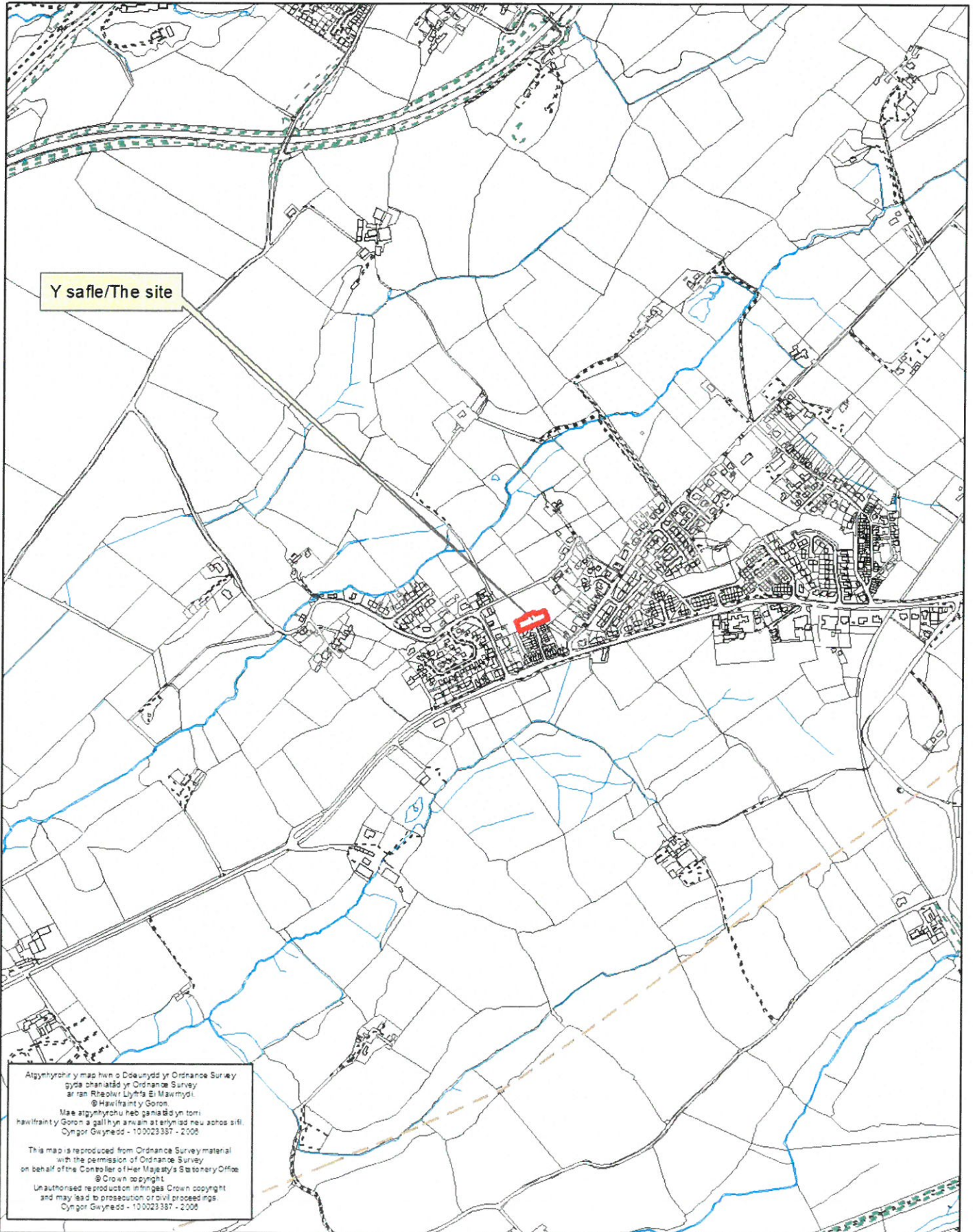
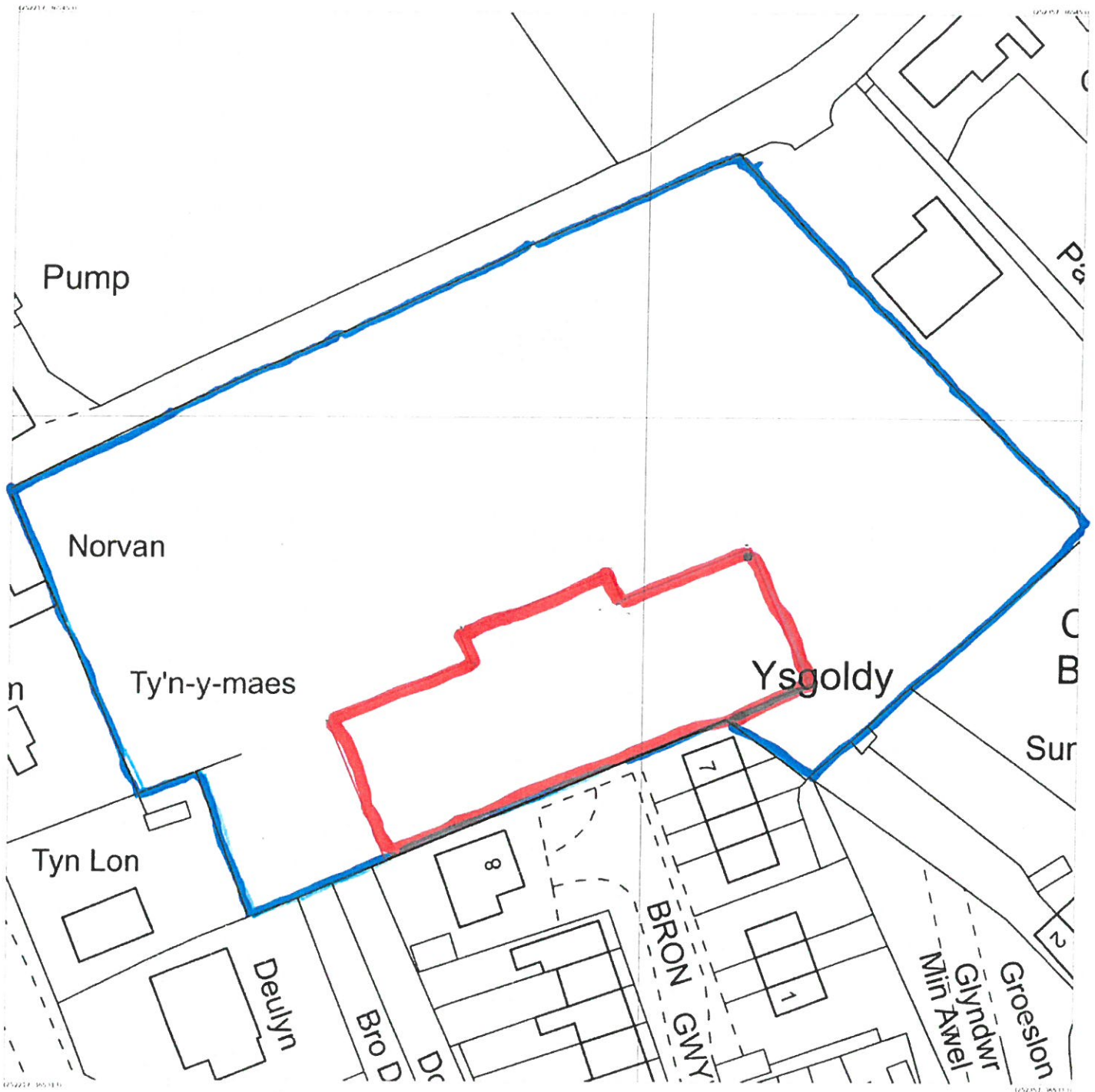


Rhif y Cais / Application Number : C16-1406-18-LL

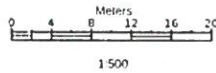
Cynllun lleoliad ar gyfer adnabod y safle yn unig. Dim i raddfa.
Location Plan for identification purposes only. Not to scale.





Produced 15 Jan 2016 from the Ordnance Survey MasterMap (Topography) Database and incorporating surveyed revision available at this date.

The representation of a road, track or path is no evidence of a right of way.
The representation of features as lines is no evidence of a property boundary.



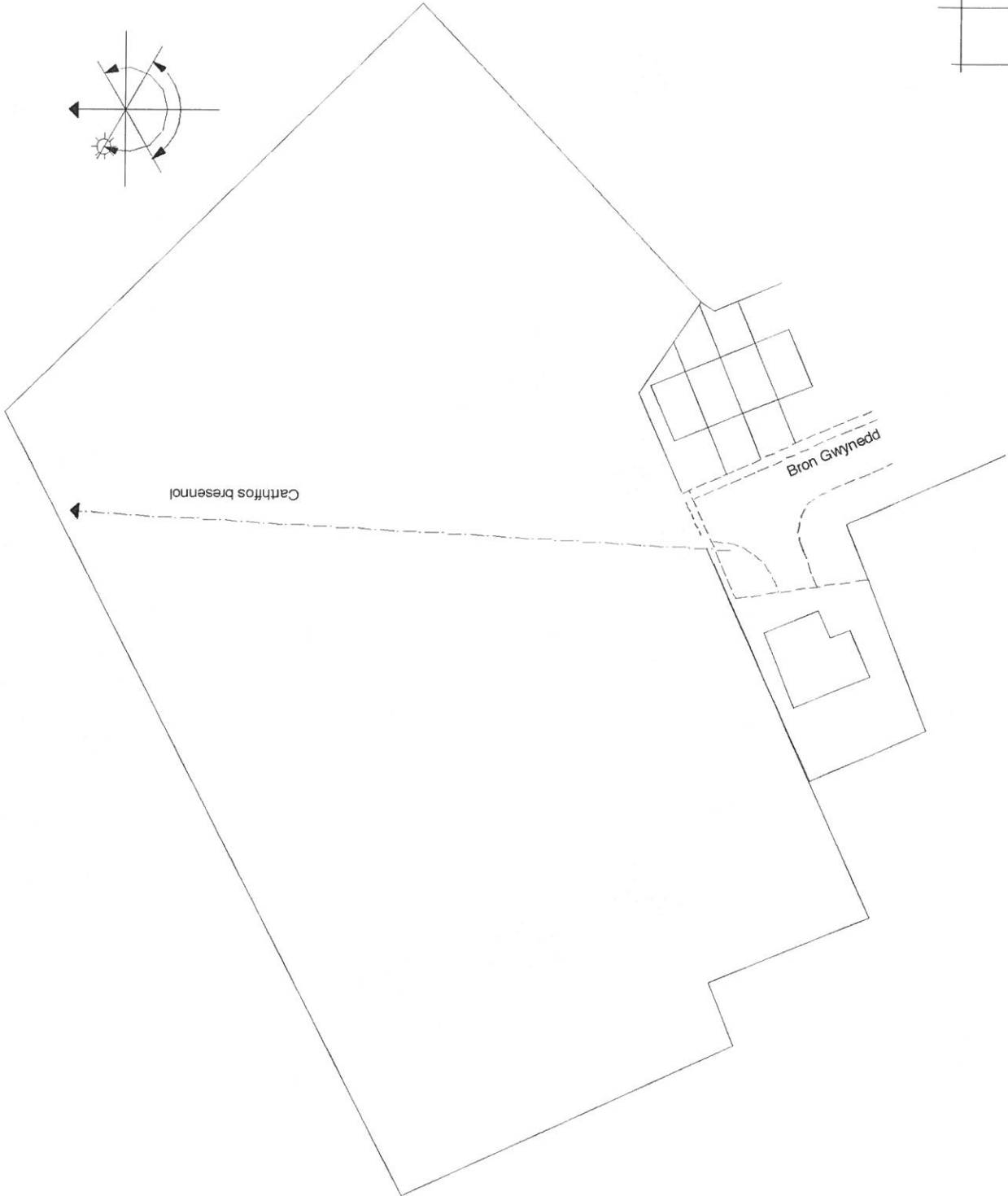
Bron Gwynedd, Bethel, Caernarfon
LL55 1UN

Supplied by: Stanfords 15 Jan 2016
Licence: © Crown copyright and database rights 2016 OS 100035409
Stanfords Order Reference: Q1947640
Centre coordinates: 252287 365383

TIR GER CAPEL BETHEL
CYMILLUN LLEOLIAD.

303/07.16
Tir ger Capel Bethel BETHEL Gwynedd
DATBLYGIAD TAI
1:500@A3

CYNLLUN BLOC
PRESENNOL

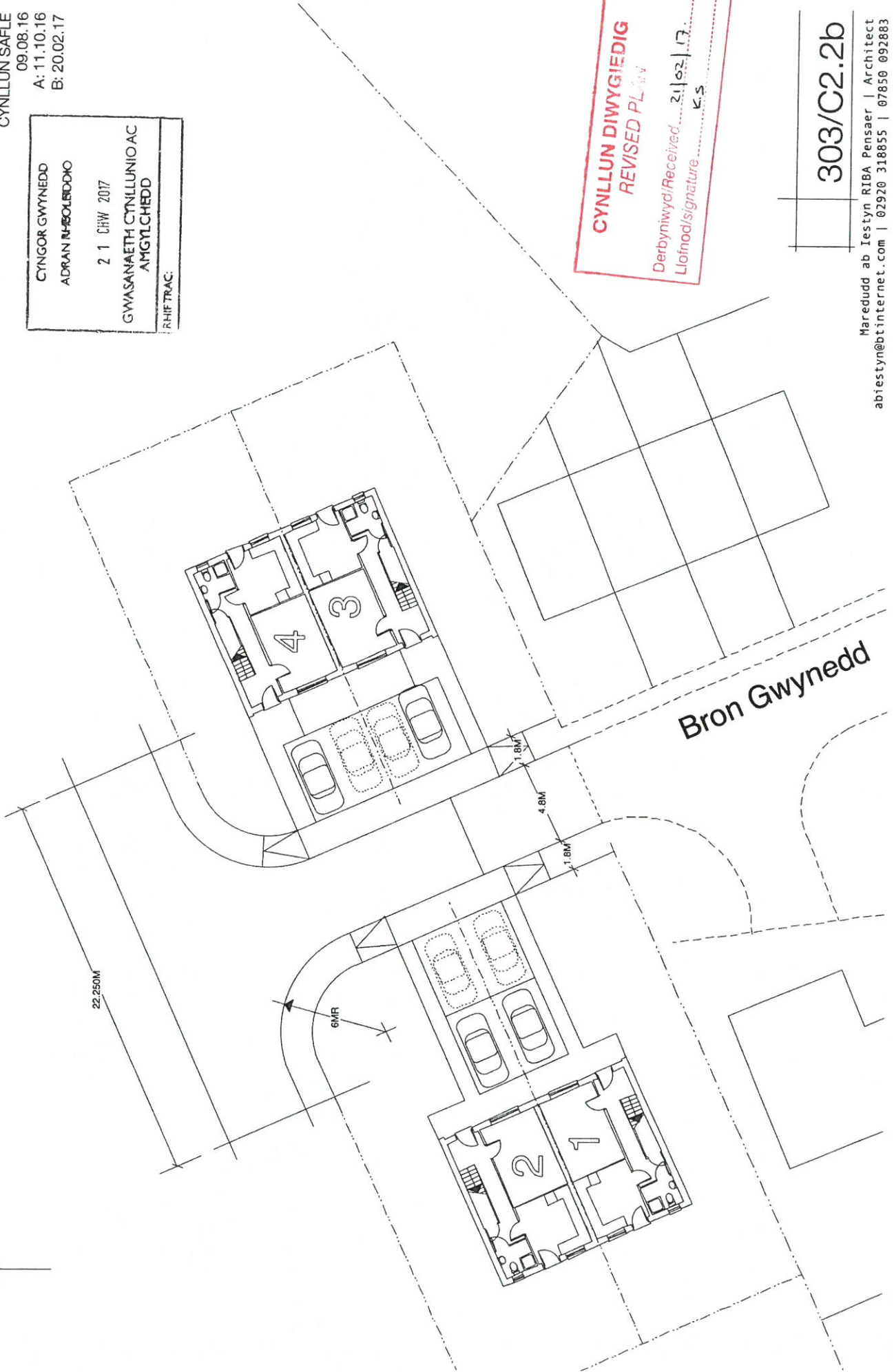
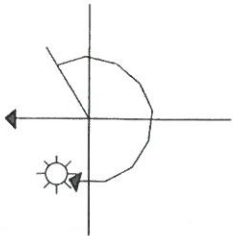


303/C1.1

303/07.16
Tir ger Capel Bethel BETHEL Gwynedd
DATBLYGIAD TAI
1:200@A3

CYNLLUN SAFLE
09.08.16
A: 11.10.16
E: 20.02.17

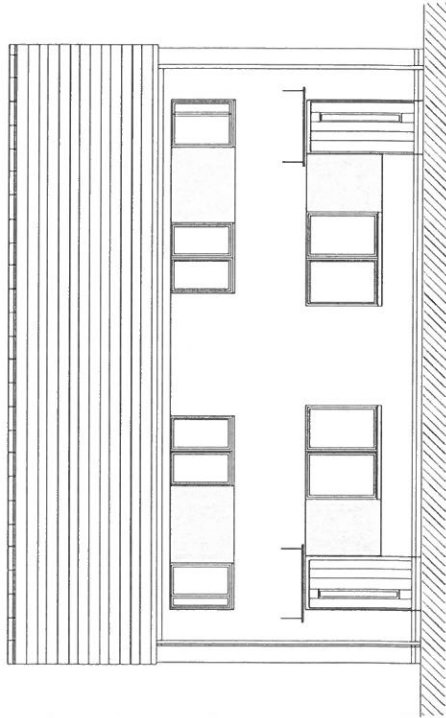
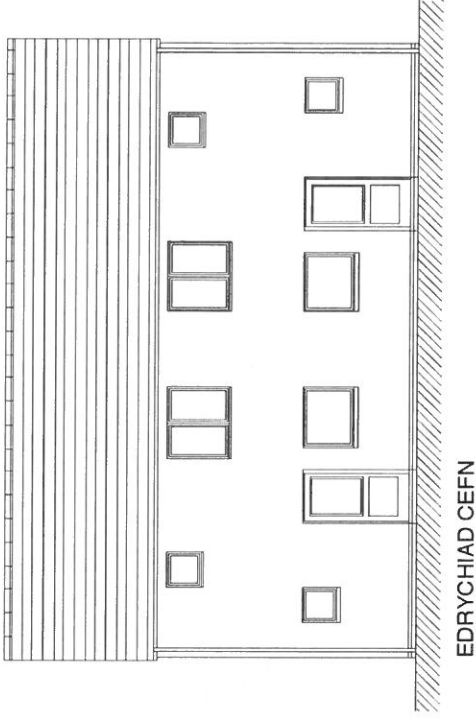
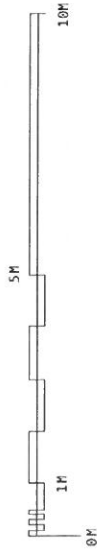
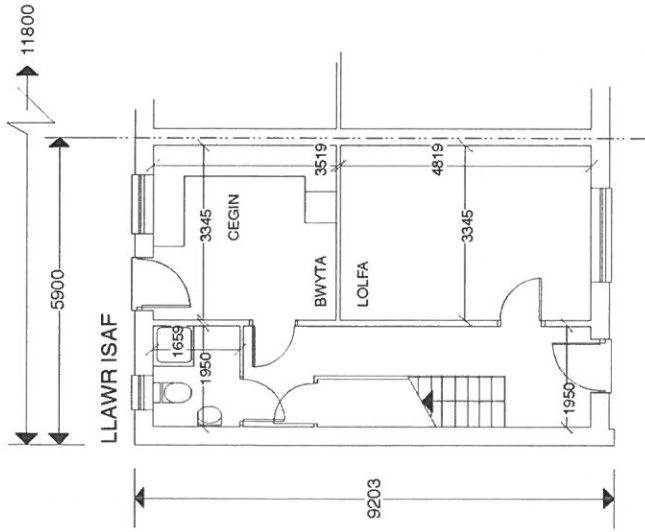
CYNGOR GWYNEDD ADRAN RHIFOLUDDIO 21 CHW 2017 GWASANAETH CYNLLUNIO AC AMGYLCHEDD RHIF TRAC:



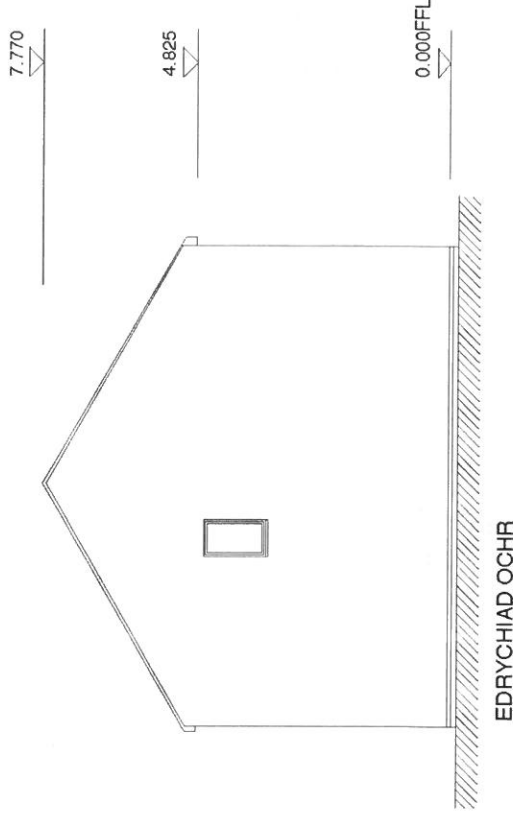
CYNLLUN DIWYGIEDIG
REVISED PLAN
Derbyniwyd/Received... 21/02/17.
Llofnod/signature... K.S






303/C2.2b

Maredudd ab Iestyn RIBA Pensaer | Architect
abiestyn@btinternet.com | 02920 318855 | 07850 092883



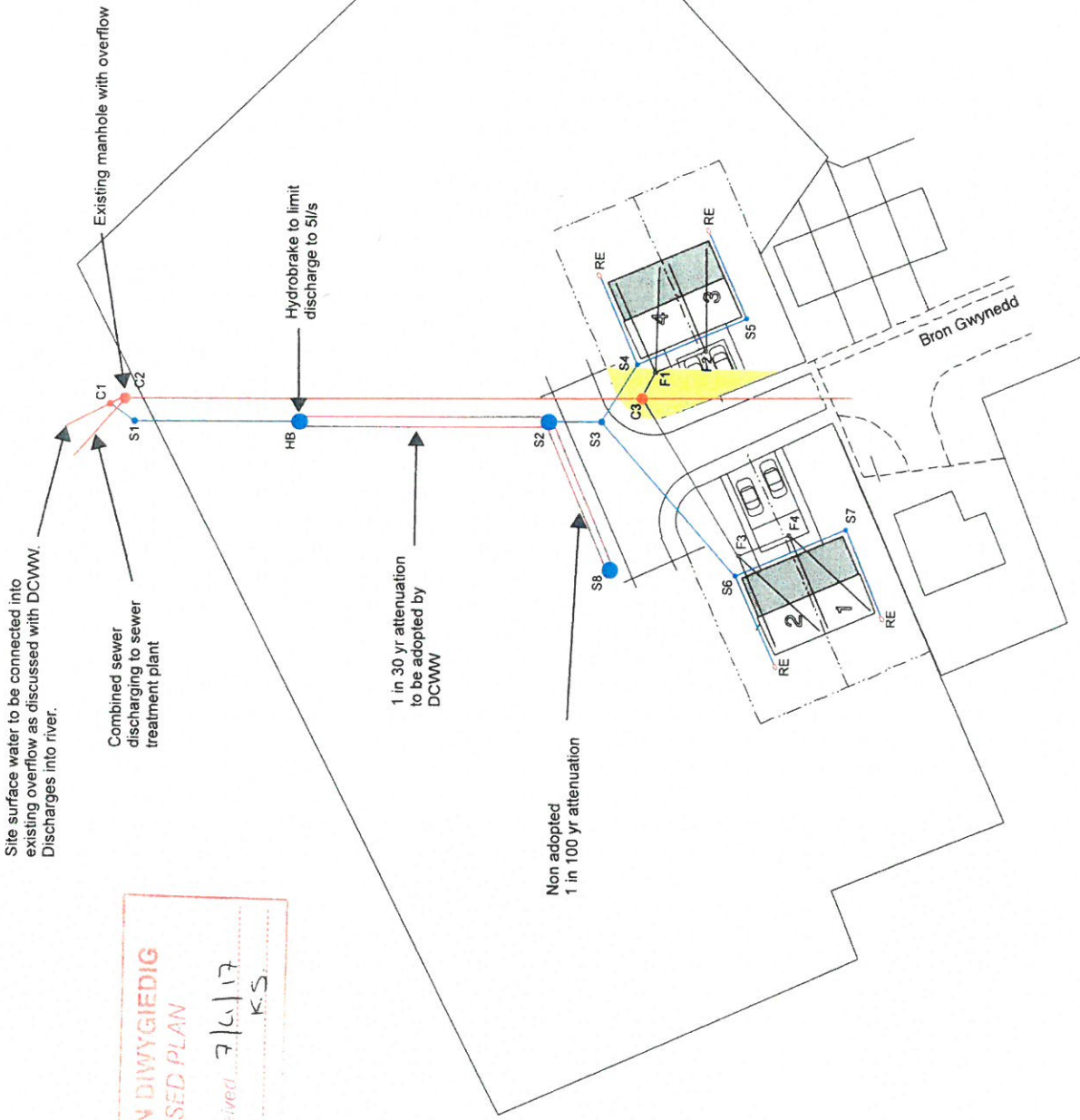
EDRYCHIAD BLAEN
 DEFNYDDIAU ADEILADU
 WALLIAU Rendr/chwip gyda phaneli lliw, i'r edrychiad blaen
 TO Llechi naturiol gyda telis crib lliw du
 DRYSAU Composite
 FENESTRI uPVC llwyd
 GWTERI ETC uPVC llwyd



-  Existing Combined Sewer with new chamber
-  Surface water sewer
-  Foul sewer
-  Attenuation
-  3m easement for existing sewer

All highway runoff will be collected via gullies and discharged into the existing highway system within Bron Gwynedd and afford for highway adoption.

Proximity of attenuation to existing combined sewer to be agreed with DCWW



Site surface water to be connected into existing overflow as discussed with DCWW. Discharges into river.

Combined sewer discharging to sewer treatment plant

Hydrobrake to limit discharge to 5l/s

1 in 30 yr attenuation to be adopted by DCWW

Non adopted 1 in 100 yr attenuation

**CYNLLUN DIWYGIEDIG
REVISED PLAN**

Deddyrwyddi Received 7/6/17
Llofnodi signature K.S.

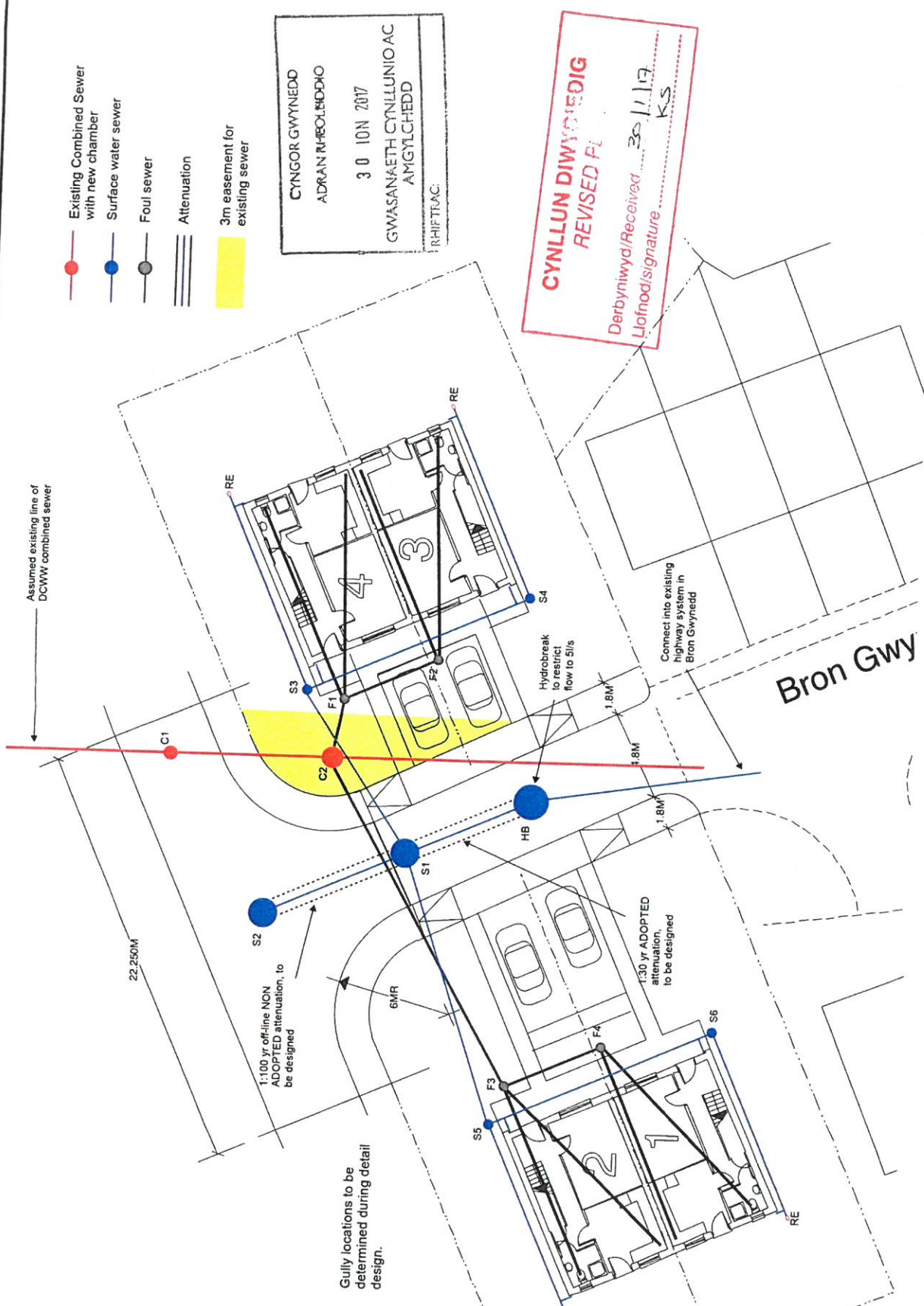
GWASANYDDI CYMRU/UNIO AC
07 EBR 2017
ANGYMOEDD
Pwyllwr

This drawing is Copyright ©

TITLE	PROJECT		DATE	SCALE
	Bron Gwynedd, Bethel			
DRAWN	JOB No.	ACID Ref.	CHECKED	PASSED
REV	DPR No.	SK03	DRAWN	JA



WORLDWIDE LEADERS IN PLANNING



- Existing Combined Sewer with new chamber
- Surface water sewer
- Foul sewer
- Attenuation
- 3m easement for existing sewer

CYNGOR GWYNEDD
 ADARAN RHOLBUDDHO
 3 0 10N 2017
 GWASANAETH CYNLLUNIO AC
 AMGYLCHEDD
 RHIF TRAC:

CYNLLUN DIWYBODAETHIG
 REVISED PL

Derbyniwyd/Received... 30/11/17
 Llofnod/signature... KS

	JOB No.	16261	DATE	02.12.16	SCALE	NOT TO SCALE
	ACAD Ref.	-	CHECKED	JA	PASSED	REV
	DRAWN	JA	DRG No.			
 DATRYS						
PROJECT Bron Gwynedd, Bethel						
TITLE Drainage Scheme						

This drawing is Copyright ©