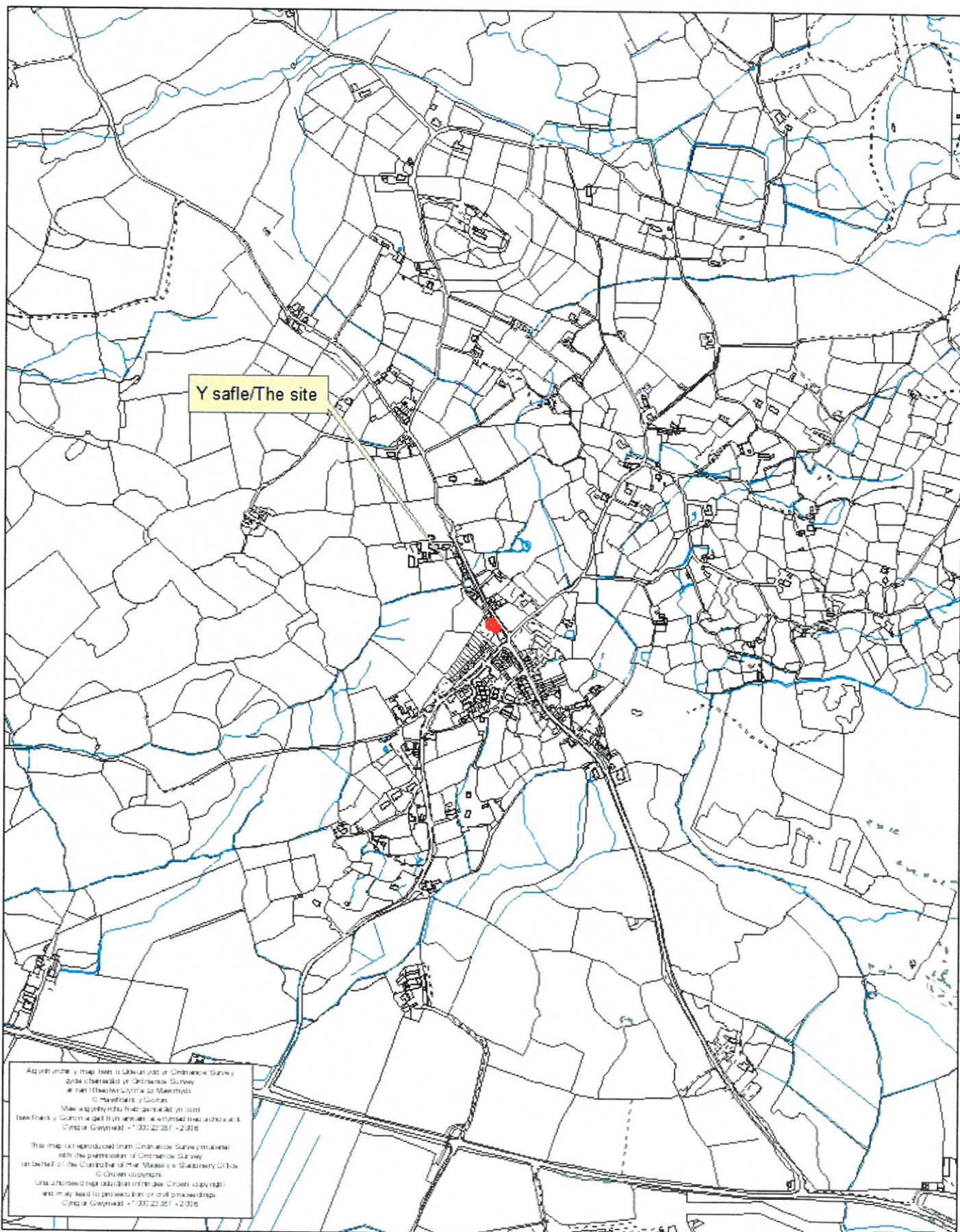


Rhif y Cais / Application Number : C17/1094/36/LL

Cynllun lleoliad ar gyfer adnabod y safle yn unig. Dim i raddfa.
Location Plan for identification purposes only. Not to scale.



Land Registry

Wales Office
Title Plan

Title number **WA558689**
Ordnance Survey map reference **SH4944SE**
Scale **1:1250** enlarged from 1:2500
Administrative area **Gwynedd**

© Crown Copyright. Produced by Land Registry. Reproduction in whole or in part is prohibited without the prior written permission of Ordnance Survey. Licence Number 100026316

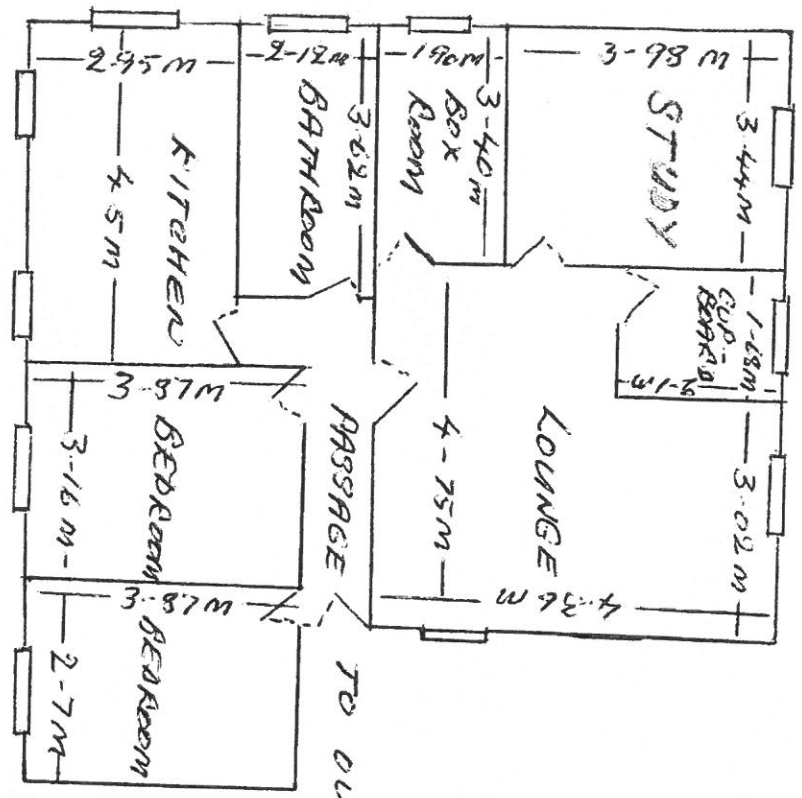


This official copy issued on 12 January 2010 shows the state of this title plan on 12 January 2010 at 11:00:18. It is admissible in evidence to the same extent as the original (s.67 Land Registration Act 2002). This title plan shows the general position, not the exact line, of the boundaries. It may be subject to distortions in scale. Measurements scaled from this plan may not match measurements between the same points on the ground. See Land Registry Public Guide 19 - Title Plans and Boundaries.
This title is dealt with by Land Registry, Wales Office.





UPSTAIRS - PRESENT



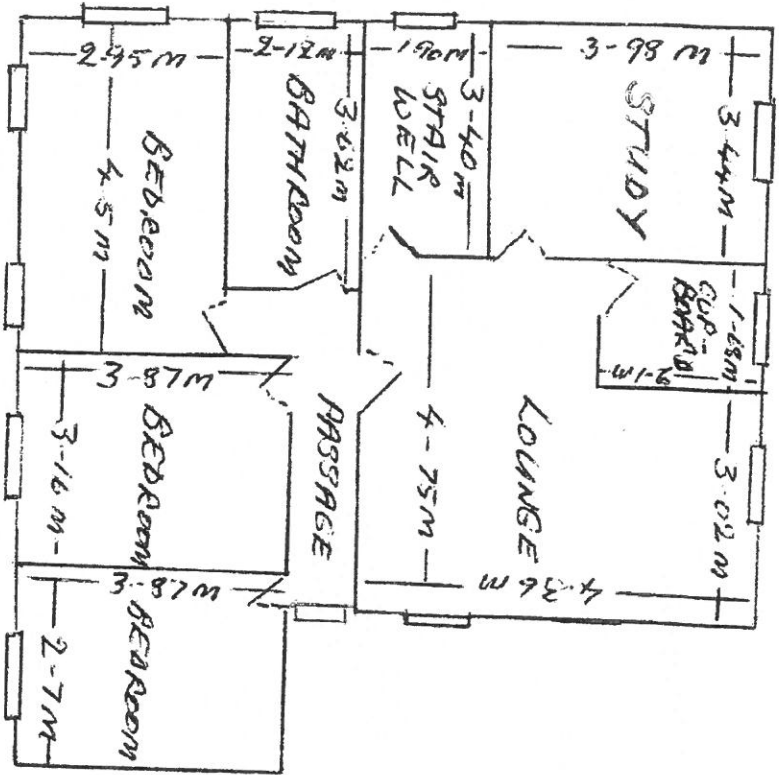
SCALE 1cm = 1m

▬ WINDOWS

CYNGOR GWYBODA
 ADRAN AMGYLCHEDD
 22 NOV 2017
 GWASANAETH CYLLUNIO AC
 AMGYLCHEDD



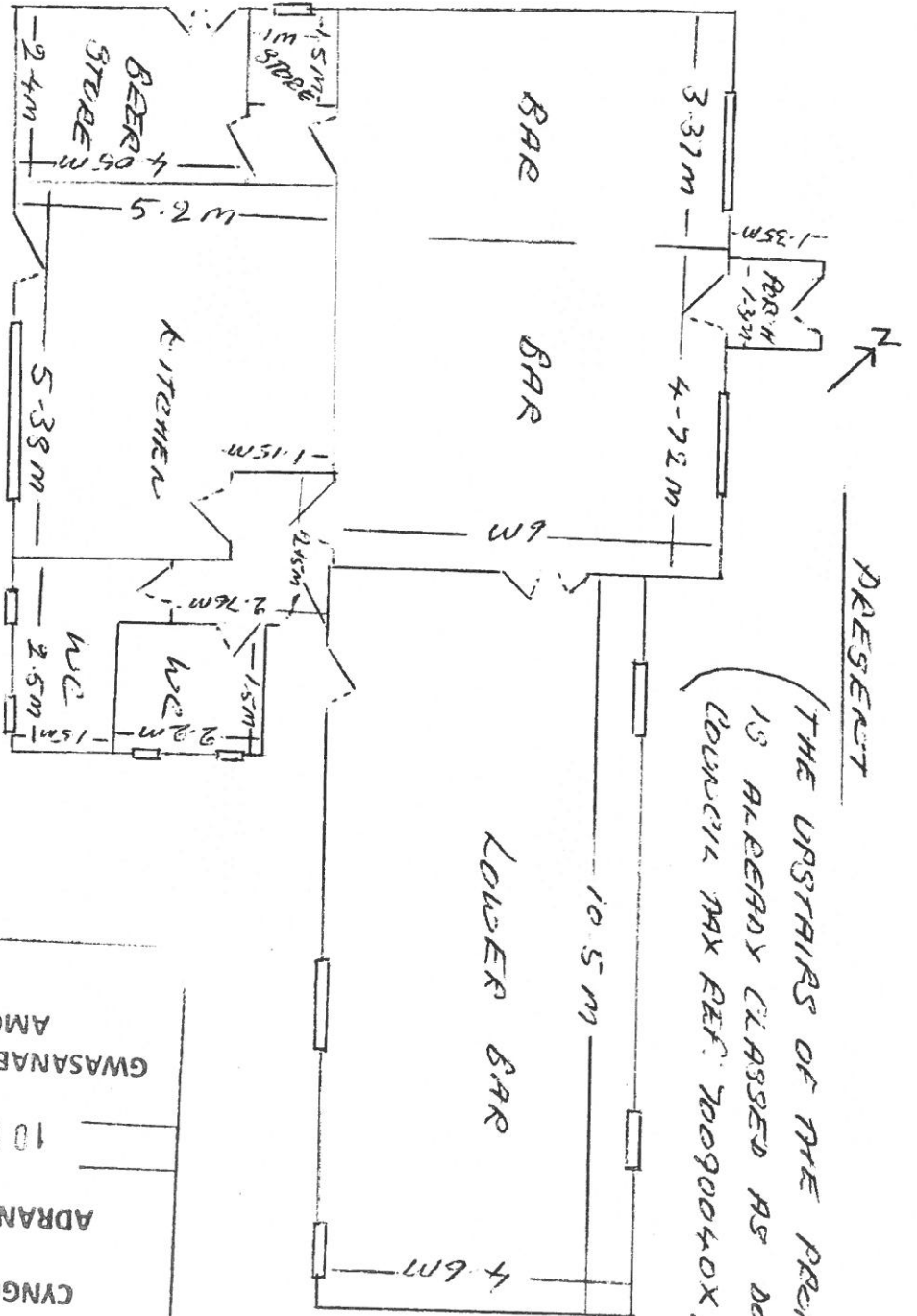
UPSTAIRS - PROPOSED



SCALE 1cm = 1m

▭ WINDOWS

CYNGOR GWYNEDD
ADRAN AMGYCHEDD
22 NOV 2017
GWASANAETH CYLLUNIDAC
AMGYCHEDD

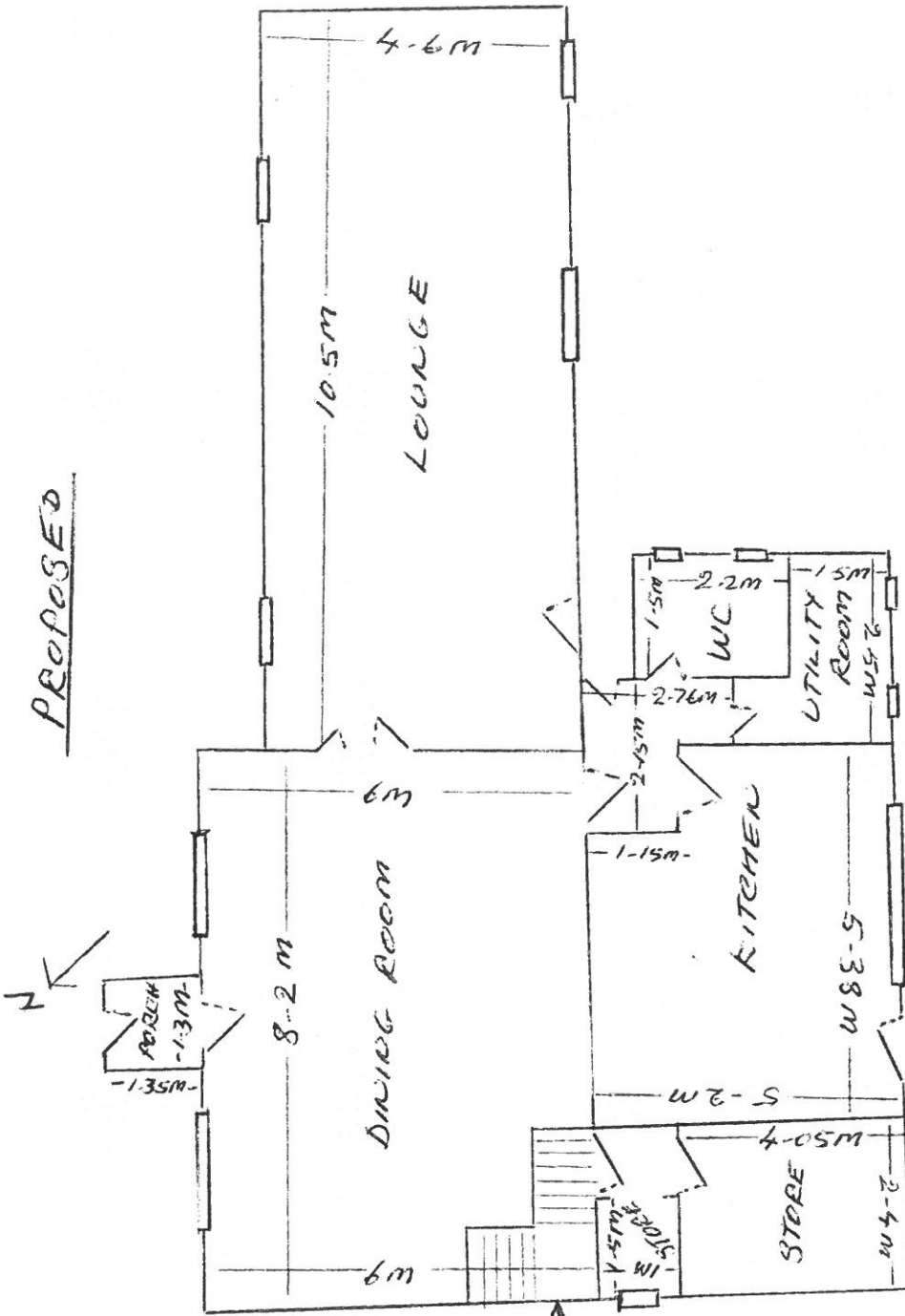


(THE UPSTAIRS OF THE PROPERTY IS ALREADY CLASSED AS DOMESTIC. COUNCIL MAX REF: 70090040X/11/10)

SCALE 1CM = 1M
 ──── WINDOWS

CYNGOR GWYNEDD
 ADRAN AMGYLCHEDD
 10 NOV 2017
 GWASANAETH CYNLUNIO AC
 AMGYLCHEDD

PROPOSED



SCALE 1cm = 1m

WINDOWS

CYNGOR GWYNEDD
ADRAN AMGYLCHEDD
10 NOV 2017
GWASANAETH CYNLUNIO AC
AMGYLCHEDD

INTERNAL STAIRS