

This drawing must be printed in colour to be read correctly

Notes
 Figure dimensions are to be used in all cases.
 Dimensions should not be scaled from drawing.
 All drawing dimensions should be checked on site before commencement of the work.
 Any discrepancies in dimensions should be clarified with the Architect prior to commencement of the work.
 No variation from this drawing shall be permitted without the prior written consent of the Architect.
 The drawing is to be read in conjunction with all relevant Mechanical and Electrical drawings.
 The drawing is to be read in conjunction with the relevant Structural Engineer's drawings, structural calculations and recommendations.
 This drawing is to be read in conjunction with the relevant Fire Safety Strategy drawings.

The drawing must be read in conjunction with LMA drawing 7500 Strategy Development Assessment which indicates all current and some anticipated risks that have been identified by Lovelock Mitchell Architects in accordance with the CDM Regulations 2015.

This drawing is copyright and to be referred to the architect on completion of the contract.

- Legend_Tree_Category**
- Category A
 - Category B
 - Category C
 - Category U
 - Road Protection

Legend_Drawing_Notes

SPACE SEPARATION
 Based on General Planning Guidance - to be confirmed by Local Planning Authority.
 In cases where the windows of two facing habitable rooms that is, those that are not adjacent where direct overlooking is possible a guideline of 22 metres should be applied.
 In cases where a window in a habitable room facing the tank wall for open recreation or an adjacent house which is higher than the top of the window a guideline of 12 metres from the wall should be applied.
 On sloping ground, for every 1 metre difference in height, the above guidelines are increased by 2 metres.

HABITABLE ROOMS
 Habitable rooms are classed as living rooms, bedrooms, studies and dining/denies. High storage, cloakrooms, kitchens and utility rooms are not counted as habitable rooms for this purpose.

PARKING STANDARDS
 Based on General Planning Guidance - to be confirmed by Local Planning and Highways Authority.
 Circulation lanes should be min 3.0m (one way) and min 5.0m (two way)

Parking space should be a minimum of

Standard space	2.4 x 4.8m
Disabled space	2.8 x 4.8m

Maximum vehicle parking - residential

C3 Dwellings	1 bedroom house	1.5 car spaces per unit
	2 bedroom house	2 car spaces per unit
	3 bedroom house	2.5 car spaces per unit
	>3 bedroom house	3 car spaces per unit

Flats

	1 car space per unit + 1 car space per 2 units for visitors
--	---

Parking on this (Detailed) development (minimum)

4 No. 2 bedroom house	8 spaces
8 No. 3 bedroom house	18 spaces
TOTAL	26 spaces

Density of development = 27.5 dwellings per hectare

16	7 x 3 and 4 bedroom houses (see notes)	0m	NW	20/18/22
17	2 x 2 bedroom houses (see notes)	0m	NW	20/18/22
18	2 x 2 bedroom houses (see notes)	0m	NW	20/18/22
19	2 x 2 bedroom houses (see notes)	0m	NW	20/18/22
20	2 x 2 bedroom houses (see notes)	0m	NW	20/18/22
21	2 x 2 bedroom houses (see notes)	0m	NW	20/18/22
22	2 x 2 bedroom houses (see notes)	0m	NW	20/18/22
23	2 x 2 bedroom houses (see notes)	0m	NW	20/18/22
24	2 x 2 bedroom houses (see notes)	0m	NW	20/18/22
25	2 x 2 bedroom houses (see notes)	0m	NW	20/18/22
26	2 x 2 bedroom houses (see notes)	0m	NW	20/18/22
27	2 x 2 bedroom houses (see notes)	0m	NW	20/18/22
28	2 x 2 bedroom houses (see notes)	0m	NW	20/18/22
29	2 x 2 bedroom houses (see notes)	0m	NW	20/18/22
30	2 x 2 bedroom houses (see notes)	0m	NW	20/18/22
31	2 x 2 bedroom houses (see notes)	0m	NW	20/18/22
32	2 x 2 bedroom houses (see notes)	0m	NW	20/18/22
33	2 x 2 bedroom houses (see notes)	0m	NW	20/18/22
34	2 x 2 bedroom houses (see notes)	0m	NW	20/18/22
35	2 x 2 bedroom houses (see notes)	0m	NW	20/18/22
36	2 x 2 bedroom houses (see notes)	0m	NW	20/18/22
37	2 x 2 bedroom houses (see notes)	0m	NW	20/18/22
38	2 x 2 bedroom houses (see notes)	0m	NW	20/18/22
39	2 x 2 bedroom houses (see notes)	0m	NW	20/18/22
40	2 x 2 bedroom houses (see notes)	0m	NW	20/18/22
41	2 x 2 bedroom houses (see notes)	0m	NW	20/18/22
42	2 x 2 bedroom houses (see notes)	0m	NW	20/18/22
43	2 x 2 bedroom houses (see notes)	0m	NW	20/18/22
44	2 x 2 bedroom houses (see notes)	0m	NW	20/18/22
45	2 x 2 bedroom houses (see notes)	0m	NW	20/18/22
46	2 x 2 bedroom houses (see notes)	0m	NW	20/18/22
47	2 x 2 bedroom houses (see notes)	0m	NW	20/18/22
48	2 x 2 bedroom houses (see notes)	0m	NW	20/18/22
49	2 x 2 bedroom houses (see notes)	0m	NW	20/18/22
50	2 x 2 bedroom houses (see notes)	0m	NW	20/18/22
51	2 x 2 bedroom houses (see notes)	0m	NW	20/18/22
52	2 x 2 bedroom houses (see notes)	0m	NW	20/18/22
53	2 x 2 bedroom houses (see notes)	0m	NW	20/18/22
54	2 x 2 bedroom houses (see notes)	0m	NW	20/18/22
55	2 x 2 bedroom houses (see notes)	0m	NW	20/18/22
56	2 x 2 bedroom houses (see notes)	0m	NW	20/18/22
57	2 x 2 bedroom houses (see notes)	0m	NW	20/18/22
58	2 x 2 bedroom houses (see notes)	0m	NW	20/18/22
59	2 x 2 bedroom houses (see notes)	0m	NW	20/18/22
60	2 x 2 bedroom houses (see notes)	0m	NW	20/18/22
61	2 x 2 bedroom houses (see notes)	0m	NW	20/18/22
62	2 x 2 bedroom houses (see notes)	0m	NW	20/18/22
63	2 x 2 bedroom houses (see notes)	0m	NW	20/18/22
64	2 x 2 bedroom houses (see notes)	0m	NW	20/18/22
65	2 x 2 bedroom houses (see notes)	0m	NW	20/18/22
66	2 x 2 bedroom houses (see notes)	0m	NW	20/18/22
67	2 x 2 bedroom houses (see notes)	0m	NW	20/18/22
68	2 x 2 bedroom houses (see notes)	0m	NW	20/18/22
69	2 x 2 bedroom houses (see notes)	0m	NW	20/18/22
70	2 x 2 bedroom houses (see notes)	0m	NW	20/18/22
71	2 x 2 bedroom houses (see notes)	0m	NW	20/18/22
72	2 x 2 bedroom houses (see notes)	0m	NW	20/18/22
73	2 x 2 bedroom houses (see notes)	0m	NW	20/18/22
74	2 x 2 bedroom houses (see notes)	0m	NW	20/18/22
75	2 x 2 bedroom houses (see notes)	0m	NW	20/18/22
76	2 x 2 bedroom houses (see notes)	0m	NW	20/18/22
77	2 x 2 bedroom houses (see notes)	0m	NW	20/18/22
78	2 x 2 bedroom houses (see notes)	0m	NW	20/18/22
79	2 x 2 bedroom houses (see notes)	0m	NW	20/18/22
80	2 x 2 bedroom houses (see notes)	0m	NW	20/18/22
81	2 x 2 bedroom houses (see notes)	0m	NW	20/18/22
82	2 x 2 bedroom houses (see notes)	0m	NW	20/18/22
83	2 x 2 bedroom houses (see notes)	0m	NW	20/18/22
84	2 x 2 bedroom houses (see notes)	0m	NW	20/18/22
85	2 x 2 bedroom houses (see notes)	0m	NW	20/18/22
86	2 x 2 bedroom houses (see notes)	0m	NW	20/18/22
87	2 x 2 bedroom houses (see notes)	0m	NW	20/18/22
88	2 x 2 bedroom houses (see notes)	0m	NW	20/18/22
89	2 x 2 bedroom houses (see notes)	0m	NW	20/18/22
90	2 x 2 bedroom houses (see notes)	0m	NW	20/18/22
91	2 x 2 bedroom houses (see notes)	0m	NW	20/18/22
92	2 x 2 bedroom houses (see notes)	0m	NW	20/18/22
93	2 x 2 bedroom houses (see notes)	0m	NW	20/18/22
94	2 x 2 bedroom houses (see notes)	0m	NW	20/18/22
95	2 x 2 bedroom houses (see notes)	0m	NW	20/18/22
96	2 x 2 bedroom houses (see notes)	0m	NW	20/18/22
97	2 x 2 bedroom houses (see notes)	0m	NW	20/18/22
98	2 x 2 bedroom houses (see notes)	0m	NW	20/18/22
99	2 x 2 bedroom houses (see notes)	0m	NW	20/18/22
100	2 x 2 bedroom houses (see notes)	0m	NW	20/18/22

16	7 x 3 and 4 bedroom houses (see notes)	0m	NW	20/18/22
17	2 x 2 bedroom houses (see notes)	0m	NW	20/18/22
18	2 x 2 bedroom houses (see notes)	0m	NW	20/18/22
19	2 x 2 bedroom houses (see notes)	0m	NW	20/18/22
20	2 x 2 bedroom houses (see notes)	0m	NW	20/18/22
21	2 x 2 bedroom houses (see notes)	0m	NW	20/18/22
22	2 x 2 bedroom houses (see notes)	0m	NW	20/18/22
23	2 x 2 bedroom houses (see notes)	0m	NW	20/18/22
24	2 x 2 bedroom houses (see notes)	0m	NW	20/18/22
25	2 x 2 bedroom houses (see notes)	0m	NW	20/18/22
26	2 x 2 bedroom houses (see notes)	0m	NW	20/18/22
27	2 x 2 bedroom houses (see notes)	0m	NW	20/18/22
28	2 x 2 bedroom houses (see notes)	0m	NW	20/18/22
29	2 x 2 bedroom houses (see notes)	0m	NW	20/18/22
30	2 x 2 bedroom houses (see notes)	0m	NW	20/18/22
31	2 x 2 bedroom houses (see notes)	0m	NW	20/18/22
32	2 x 2 bedroom houses (see notes)	0m	NW	20/18/22
33	2 x 2 bedroom houses (see notes)	0m	NW	20/18/22
34	2 x 2 bedroom houses (see notes)	0m	NW	20/18/22
35	2 x 2 bedroom houses (see notes)	0m	NW	20/18/22
36	2 x 2 bedroom houses (see notes)	0m	NW	20/18/22
37	2 x 2 bedroom houses (see notes)	0m	NW	20/18/22
38	2 x 2 bedroom houses (see notes)	0m	NW	20/18/22
39	2 x 2 bedroom houses (see notes)	0m	NW	20/18/22
40	2 x 2 bedroom houses (see notes)	0m	NW	20/18/22
41	2 x 2 bedroom houses (see notes)	0m	NW	20/18/22
42	2 x 2 bedroom houses (see notes)	0m	NW	20/18/22
43	2 x 2 bedroom houses (see notes)	0m	NW	20/18/22
44	2 x 2 bedroom houses (see notes)	0m	NW	20/18/22
45	2 x 2 bedroom houses (see notes)	0m	NW	20/18/22
46	2 x 2 bedroom houses (see notes)	0m	NW	20/18/22
47	2 x 2 bedroom houses (see notes)	0m	NW	20/18/22
48	2 x 2 bedroom houses (see notes)	0m	NW	20/18/22
49	2 x 2 bedroom houses (see notes)	0m	NW	20/18/22
50	2 x 2 bedroom houses (see notes)	0m	NW	20/18/22
51	2 x 2 bedroom houses (see notes)	0m	NW	20/18/22
52	2 x 2 bedroom houses (see notes)	0m	NW	20/18/22
53	2 x 2 bedroom houses (see notes)	0m	NW	20/18/22
54	2 x 2 bedroom houses (see notes)	0m	NW	20/18/22
55	2 x 2 bedroom houses (see notes)	0m	NW	20/18/22
56	2 x 2 bedroom houses (see notes)	0m	NW	20/18/22
57	2 x 2 bedroom houses (see notes)	0m	NW	20/18/22
58	2 x 2 bedroom houses (see notes)	0m	NW	20/18/22
59	2 x 2 bedroom houses (see notes)	0m	NW	20/18/22
60	2 x 2 bedroom houses (see notes)	0m	NW	20/18/22
61	2 x 2 bedroom houses (see notes)	0m	NW	20/18/22
62	2 x 2 bedroom houses (see notes)	0m	NW	20/18/22
63	2 x 2 bedroom houses (see notes)	0m	NW	20/18/22
64	2 x 2 bedroom houses (see notes)	0m	NW	20/18/22
65	2 x 2 bedroom houses (see notes)	0m	NW	20/18/22
66	2 x 2 bedroom houses (see notes)	0m	NW	20/18/22
67	2 x 2 bedroom houses (see notes)	0m	NW	20/18/22
68	2 x 2 bedroom houses (see notes)	0m	NW	20/18/22
69	2 x 2 bedroom houses (see notes)	0m	NW	20/18/22
70	2 x 2 bedroom houses (see notes)	0m	NW	20/18/22
71	2 x 2 bedroom houses (see notes)	0m	NW	20/18/22
72	2 x 2 bedroom houses (see notes)	0m	NW	20/18/22
73	2 x 2 bedroom houses (see notes)	0m	NW	20/18/22
74	2 x 2 bedroom houses (see notes)	0m	NW	20/18/22
75	2 x 2 bedroom houses (see notes)	0m	NW	20/18/22
76	2 x 2 bedroom houses (see notes)	0m	NW	20/18/22
77	2 x 2 bedroom houses (see notes)	0m	NW	20/18/22
78	2 x 2 bedroom houses (see notes)	0m	NW	20/18/22
79	2 x 2 bedroom houses (see notes)	0m	NW	20/18/22
80	2 x 2 bedroom houses (see notes)	0m	NW	20/18/22
81	2 x 2 bedroom houses (see notes)	0m	NW	20/18/22
82	2 x 2 bedroom houses (see notes)	0m	NW	20/18/22
83	2 x 2 bedroom houses (see notes)	0m	NW	20/18/22
84	2 x 2 bedroom houses (see notes)	0m	NW	20/18/22
85	2 x 2 bedroom houses (see notes)	0m	NW	20/18/22
86	2 x 2 bedroom houses (see notes)	0m	NW	20/18/22
87	2 x 2 bedroom houses (see notes)	0m	NW	20/18/22
88	2 x 2 bedroom houses (see notes)	0m	NW	20/18/22
89	2 x 2 bedroom houses (see notes)	0m	NW	20/18/22
90	2 x 2 bedroom houses (see notes)	0m	NW	20/18/22
91	2 x 2 bedroom houses (see notes)	0m	NW	20/18/22
92	2 x 2 bedroom houses (see notes)	0m	NW	20/18/22
93	2 x 2 bedroom houses (see notes)	0m	NW	20/18/22
94	2 x 2 bedroom houses (see notes)	0m	NW	20/18/22
95	2 x 2 bedroom houses (see notes)	0m	NW	20/18/22
96	2 x 2 bedroom houses (see notes)	0m	NW	20/18/22
97	2 x 2 bedroom houses (see notes)	0m	NW	20/18/22
98	2 x 2 bedroom houses (see notes)	0m	NW	20/18/22
99	2 x 2 bedroom houses (see notes)	0m	NW	20/18/22
100	2 x 2 bedroom houses (see notes)	0m	NW	20/18/22

Lovelock Mitchell Architects
 3 Sturges Street, Chester, Ch1 0LS
 Tel: +44 (0) 1244 604321
 e-mail: admin@lovelockmitchell.com
 www.lovelockmitchell.com

Project: Gwynedd Council Former Ysgol Coed Mawr Bangor

Title: Site Plan

LMA Project	Drawing number	Rev.
1817	GCM_LMA_00_XX_DR_A_9003	P9



Site Plan Option01_LMAHouseTypes
 Scale: 1:200

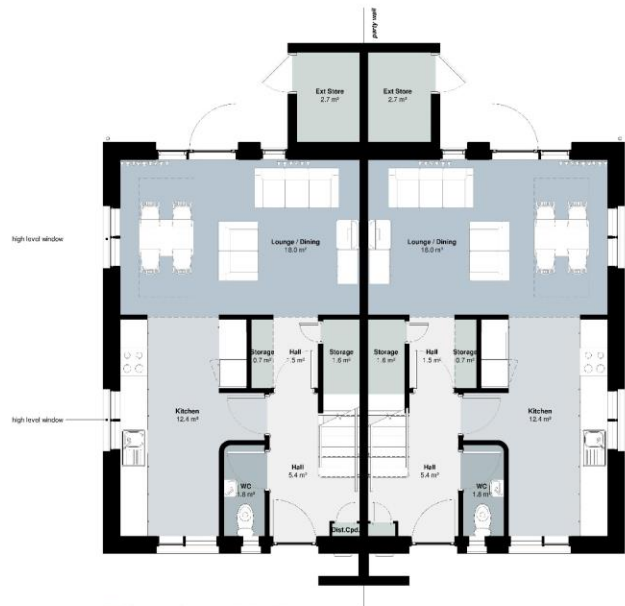


Notes

Figured dimensions are to be used in all cases. Dimensions should not be taken from drawings. All existing dimensions should be shown on site before commencement of the work. Any discrepancies in dimensions should be clarified with the Architect prior to commencement of the work. This drawing is to be read in conjunction with all the relevant Mechanical and Electrical drawings. This drawing is to be read in conjunction with the relevant Fire Safety Strategy drawings.

This drawing must be read in conjunction with LMA drawings 7000 Strategy, Design/Pre-Access/Assessment which indicates all current and active emergency risks that have been identified by Lovelock Mitchell Architects in accordance with the CDM Regulations 2015.

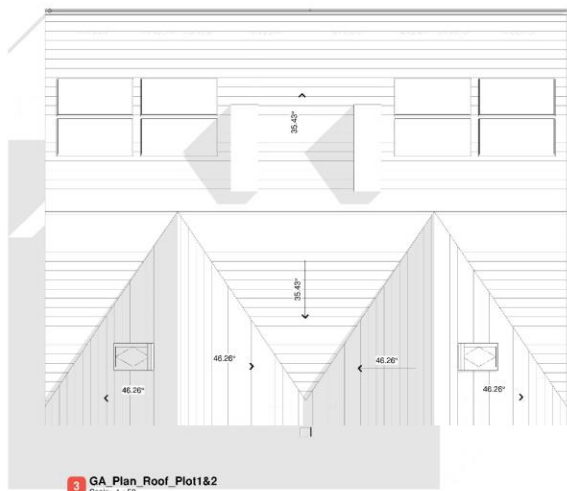
This drawing is copyright and to be returned to the architect on completion of the contract.



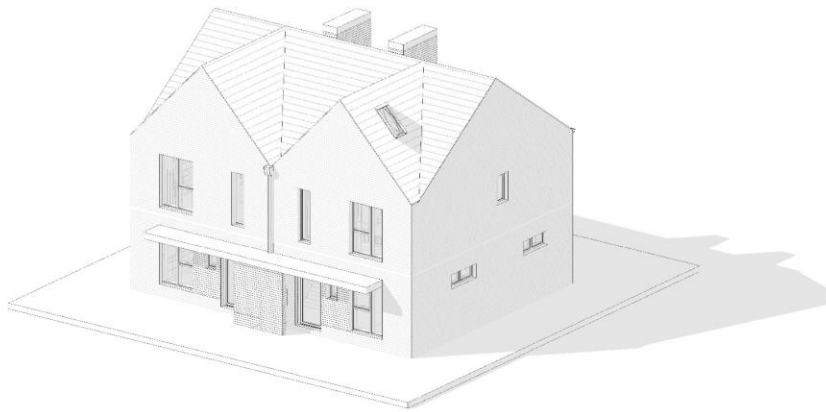
1 GA Plan_Ground_00_Plot1&2
Scale: 1:50



2 GA Plan_First_01_Plot1&2
Scale: 1:50



3 GA Plan_Roof_Plot1&2
Scale: 1:50



5 Axonometric_Plot1&2

Rev	Revised description	Drawn	Checkd	Date
01	Issued for tenders	DM	NM	06/02/22



Project
Gwynedd Council
Former Ysgol Coed Mawr Bangor

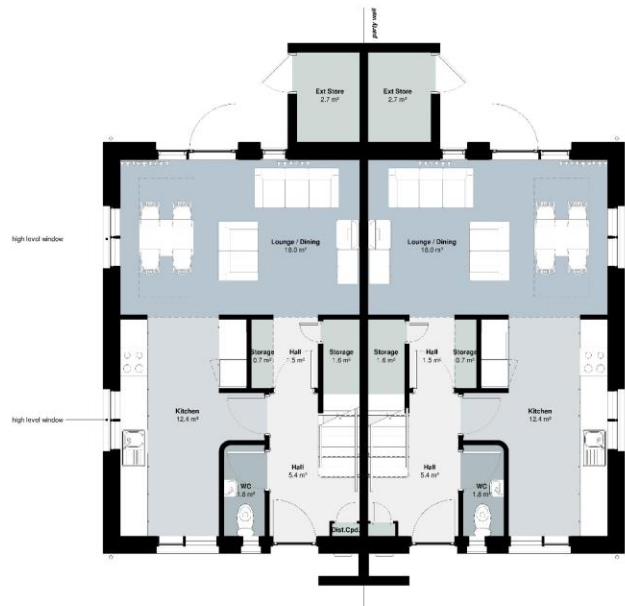
File
GA_Plans_4P2B_Dwelling_Plot1&2

LMA Project	Drawing Number	Rev.
1817 GCMLMA	01 XX DR A 7000	P1

Figured dimensions are to be used in all cases.
 Dimensions should not be copied from drawing.
 All existing dimensions should be shown on site before commencement of the work.
 Any discrepancies in dimensions should be clarified with the Architect prior to commencement of the work.
 This drawing is to be read in conjunction with all the relevant Mechanical and Electrical drawings.
 This drawing is to be read in conjunction with the relevant Fire Safety Strategy drawings.

This drawing must be read in conjunction with LMA drawings.
 7000 Strategy Design/Task/Assessment which indicates all current and active design risks that have been identified by Lovelock Mitchell Architects in accordance with the CDM Regulations 2015.

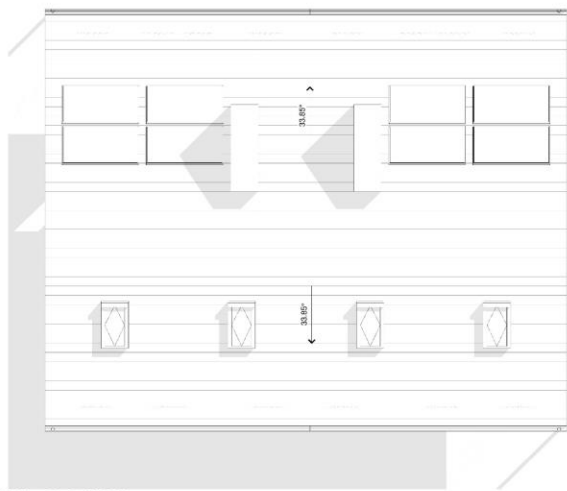
This drawing is copyright and to be returned to the architect on completion of the contract.



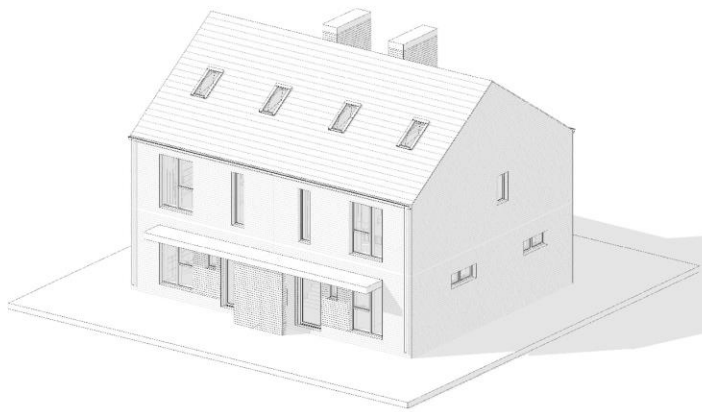
1 GA Plan_Ground_00_Plot7&8
 Scale: 1 : 50



2 GA Plan_First_01_Plot7&8
 Scale: 1 : 50



4 GA Plan_Roof_Plot7&8
 Scale: 1 : 30



3 Axonometric_Plot7&8

Rev	Revised description	Drawn	Checkd	Date
01	Issued for	DM	NM	06/02/22



Project
 Gwynedd Council
 Former Ysgol Coed Mawr Bangor

File
 GA_Plans_4P2B_Dwelling_Plot7&8

LMA Project	Drawing Number	Rev.
1817 GCMLMA	01 XX DR A 7001	P1

Notes

Figured dimensions are to be used in all cases.
 Dimensions should not be scaled from drawings.
 All existing dimensions should be checked on site before commencement of the work.
 Any discrepancies in dimensions should be clarified with the Architect prior to commencement of the work.
 Any deviation from this drawing will be permitted without the prior written consent of the Architect.
 This drawing is to be read in conjunction with all the relevant Mechanical and Electrical drawings.
 This drawing is to be read in conjunction with the relevant Structural Engineers drawing, structural calculations and recommendations.
 This drawing is to be read in conjunction with the relevant Fire Safety Strategy drawings.

This drawing must be read in conjunction with LMA drawing 7000 Strategy Design/PrakAssessments which indicates all current and active emergency risks that have been identified by Lovelock Mitchell Architects in accordance with the CDM Regulations 2015.

This drawing is copyright and to be returned to the architect on completion of the contract.

Schedule, Proposed Materials, Accessories

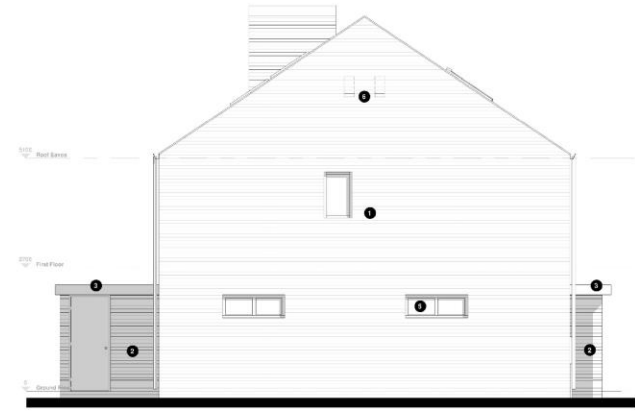
Number	Material
1	Material: Facing Brickwork Colour: Buff TBC
2	Material: Facing Brickwork Colour: Black Grey TBC
3	Material: PVC-Auxiliary Fixings Colour: Grey TBC
4	Material: Tie Rods Colour: Grey TBC
5	Material: PVC-Auxiliary Frames Colour: Grey TBC
6	[Bat Tube Ref B110, or similar approved]



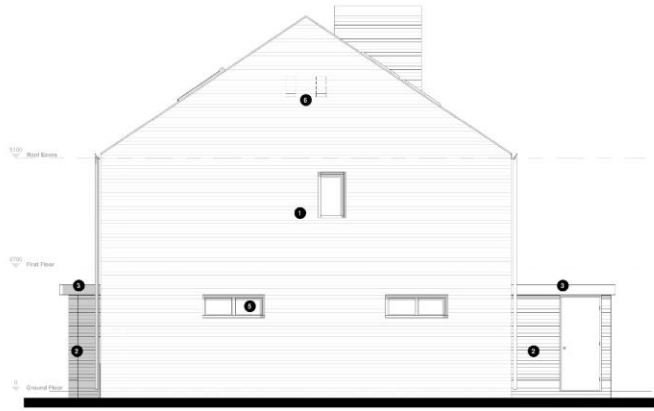
1 GA Elevation_Front_Plot7&8
Scale: 1 : 50



2 GA Elevation_Rear_Plot7&8
Scale: 1 : 50



3 GA Elevation-1_Side_Plot7&8
Scale: 1 : 50



4 GA Elevation-2_Side_Plot7&8
Scale: 1 : 50

PO: (Revisions added to guide revisions)	CM	NAI	06.03.20
PI: (Revisions made)	CM	NAI	06.03.20
Rev: (Revised description)	Drawn	Checked	Date

LMA
 Lovelock Mitchell Architects
 3 Sanyal Street, Chester, CH1 2LS
 Tel: +44 (0) 1284 404321
 e-mail: admin@lovelockmitchell.com
 web: www.lovelockmitchell.com

Project
 Gwynedd Council
 Former Ysgol Coed Mawr Bangor

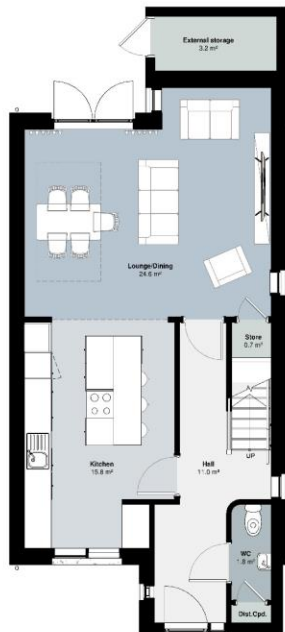
File
 GA_Elevations_4P2B_Dwelling_Plot7&8

LMA Project	Drawing Number	Rev.
1817 GCMLMA	01 XX DR A 7011	P2

Notes

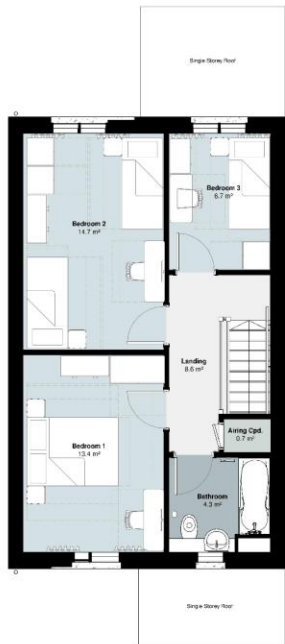
Figured dimensions are to be used in all cases.
 Dimensions should not be scaled from drawing.
 All existing dimensions should be shown on site before commencement of the work.
 Any discrepancies in dimensions should be clarified with the Architect prior to commencement of the work.
 This drawing is to be read in conjunction with the prior written consent of the Architect.
 This drawing is to be read in conjunction with all the relevant Mechanical and Electrical drawings.
 This drawing is to be read in conjunction with the relevant Structural Engineers drawings, structural calculations and recommendations.
 This drawing is to be read in conjunction with the relevant Fire Safety Strategy drawings.

This drawing must be read in conjunction with LMA drawings.
 7000 Strategy Design/PreAssessment which indicates all current and active design risks that have been identified by Lovelock Mitchell Architects in accordance with the CDM Regulations 2015.
 This drawing is copyright and to be returned to the architect on completion of the contract.



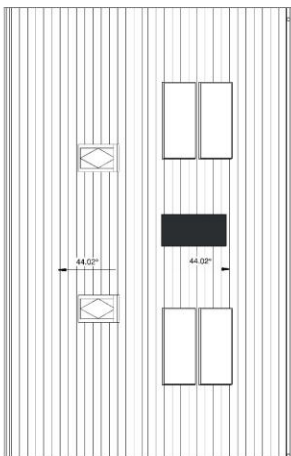
1 GA_Plan_Ground_00_Plot9&10
 Scale: 1 : 50

Note: Plot 10 is mirrored

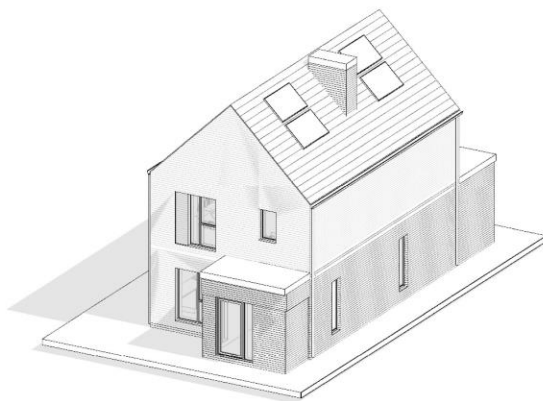


2 GA_Plan_First_01_Plot9&10
 Scale: 1 : 50

Note: Plot 10 is mirrored



3 GA_Plan_Roof_Plot9&10
 Scale: 1 : 50



4 Axonometric_Plot9&10

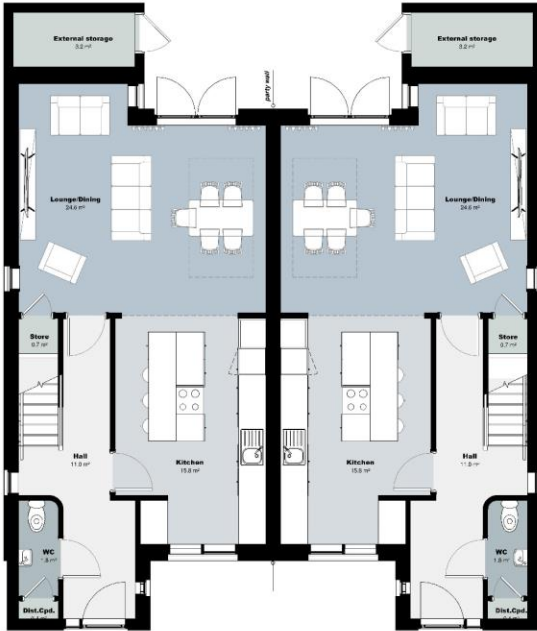
Pl	Revised Issue	DW	NM	06/02/22
Rev	Revised description	Drawn	Checked	Date



Project
 Gwynedd Council
 Former Ysgol Coed Mawr Bangor

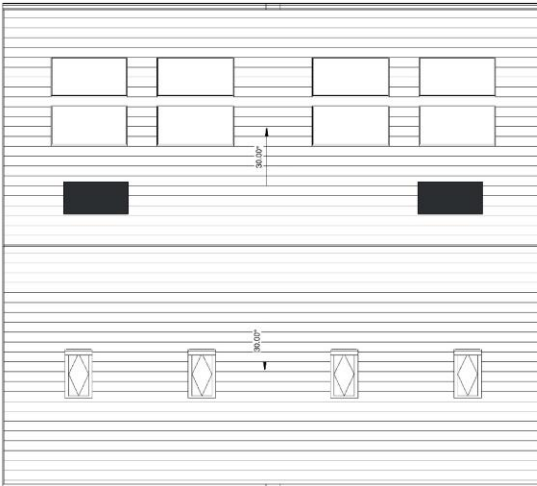
File
 GA_Plans_5P3B_Dwelling_Plot9&10

LMA Project	Drawing Number	Rev.
1817	GCMLMA 02 XX DR A 7000	P1



1 GA_Plan_Ground_00_Plot3&4

Scale: 1 : 50



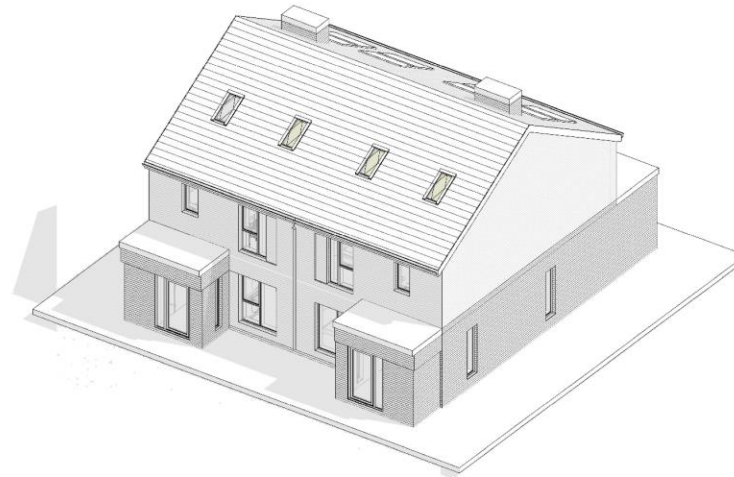
3 GA_Plan_Roof_Plot3&4

Scale: 1 : 50



2 GA_Plan_First_01_Plot3&4

Scale: 1 : 50



4 Axonometric_Plot3&4

0m 1.5m 3m 4.5m 6m A1

VISUAL SCALE 1:75 @ A1

This drawing must be printed in colour to be read correctly.

Notes

Figured dimensions are to be used in all cases. Dimensions should not be scaled from drawings. All existing dimensions should be checked on site before commencement of the work. Any discrepancies in dimensions should be clarified with the Architect prior to commencement of the work. This drawing is to be read in conjunction with all the relevant Mechanical and Electrical drawings. This drawing is to be read in conjunction with the relevant Fire Safety Strategy drawings.

This drawing must be read in conjunction with IBS drawings. IBS Strategy Designations/References which indicate all current and active designations that have been identified by Lovelock Mitchell Architects in accordance with the CDM Regulations 2015. This drawing is copyright and to be returned to the architect on completion of the contract.



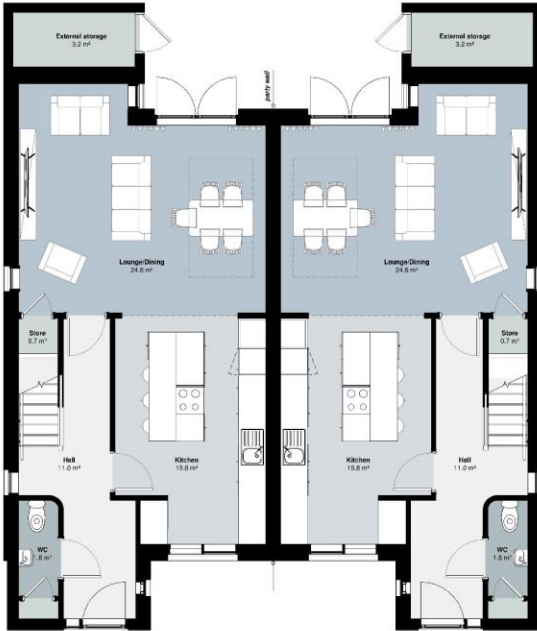
Rev	Revised description	Drawn	Check	Date
01	Issued for tender	DM	NM	05/02/22

LMA
Lovelock Mitchell Architects
 3 Salford Street, Chester, Ch1 3LS
 Tel: +44 (0) 1244 404321
 e-mail: admin@lovelockmitchell.com
 web: www.lovelockmitchell.com

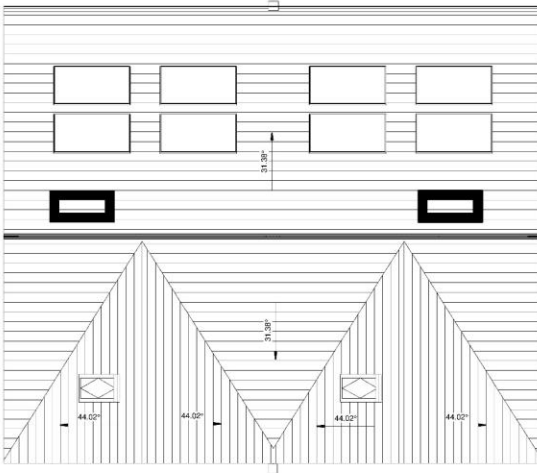
Project
Gwynedd Council
 Former Ysgol Coed Mawr Bangor

File
 GA_Plans_5P3B_Dwelling_Plot3&4

IBA Project	Drawing Number	Rev.
1817	GCMLMA 02 XX DR A 7001	P1



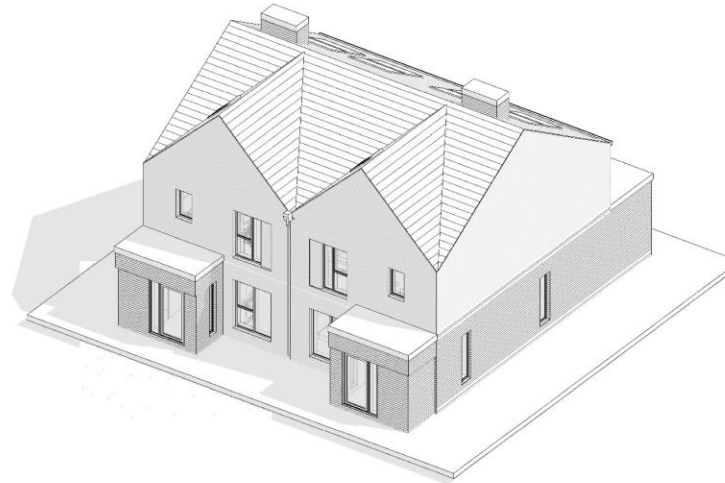
1 GA_Plan_Ground_00_Plot5&6
Scale: 1 : 50



3 GA_Plan_Roof_Plot5&6
Scale: 1 : 50



2 GA_Plan_First_01_Plot5&6
Scale: 1 : 50



4 Axonometric_Plot5&6

0m 1m 2m 3m 4m A1

VISUAL SCALE 1:50 @ A1

This drawing must be printed in colour to be read correctly.

Notes

Figured dimensions are to be used in all cases.
Dimensions should not be scaled from drawings.
All existing structures in connection should be detailed with the architect prior to commencement of the work.
Any discrepancies in connection should be pointed out with the prior written consent of the Architect.
This drawing is to be read in conjunction with all the relevant Mechanical and Electrical drawings.
This drawing is to be read in conjunction with the relevant Fire Safety Strategy drawings.

This drawing must be read in conjunction with LMA drawings.
7000 Strategy Design/Pre/Post-construction which indicates all current and active design risks that have been identified by Lovelock Mitchell Architects in accordance with the CDM Regulations 2015.
This drawing is copyright and to be returned to the architect on completion of the contract.



Rev	Revised description	Drawn	Check	Date
01	Issued for tender	DM	NM	05/02/22



Project
Gwynedd Council
Former Ysgol Coed Mawr Bangor

File
GA_Plans_5P3B_Dwelling_Plot5&6

LMA Project	Drawing Number	Rev
1817	GCMLMA 02 XX DR A 7002	P1

Notes

Figured dimensions are to be used in all cases.
 Dimensions should not be scaled from drawings.
 All existing dimensions in elevations should be checked on site before commencement of the work.
 Any discrepancies in elevations should be clarified with the Architect prior to commencement of the work.
 No deviation from this drawing will be permitted without the prior written consent of the Architect.
 This drawing is to be read in conjunction with all the relevant Mechanical and Electrical drawings.
 This drawing is to be read in conjunction with the relevant Fire Safety Strategy drawings.

This drawing must be read in conjunction with ILM drawings.
 7000 Strategy Design/Plan/Accessories which indicates all current and active emergency risks that have been identified by Lovelock Mitchell Architects in accordance with the CDM Regulations 2015.

This drawing is copyright and to be returned to the architect on completion of the contract.



Schedule, Proposed Materials, Annotation Key

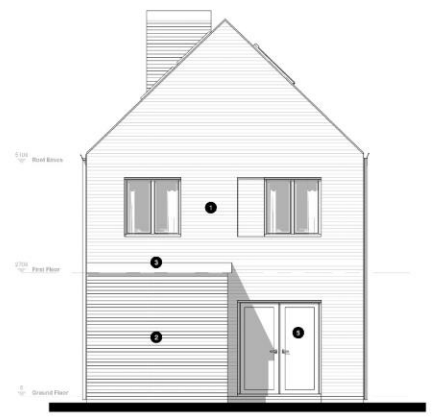
Number	Material
1	Material: Facing Brickwork Colour: Buff TBC
2	Material: Facing Brickwork Colour: Black Grey TBC
3	Material: PVC Aluminium Casings Colour: Grey
4	Material: Tile Roof Slate TBC
5	Material: PVC Aluminium Frames Colour: Grey TBC

This drawing must be read in conjunction with ILM drawings.
 7000 Strategy Design/Plan/Accessories which indicates all current and active emergency risks that have been identified by Lovelock Mitchell Architects in accordance with the CDM Regulations 2015.

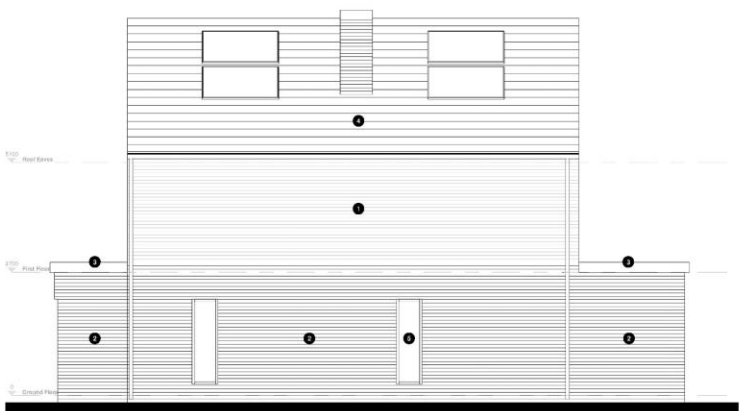
This drawing is copyright and to be returned to the architect on completion of the contract.



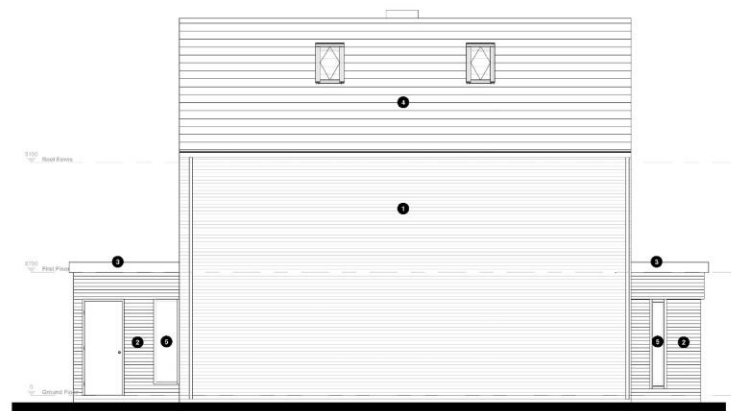
1 GA_Elevation_3B5P_House_Front_Plot9&10
 Scale: 1 : 50
 Note: Plot 10 is mirrored



2 GA_Elevation_3B5P_House_Rear_Plot9&10
 Scale: 1 : 50
 Note: Plot 10 is mirrored



3 GA_Elevation_3B5P_House_Side-1_Plot9&10
 Scale: 1 : 50



4 GA_Elevation_3B5P_House_Side-2_Plot9&10
 Scale: 1 : 50

Rev	Revised description	DW	MM	05/02/22
1	Issued for tender			



Project
 Gwynedd Council
 Former Ysgol Coed Mawr Bangor

File
 GA_Elevations_5P3B_Dwelling_Plot9&10

ILM Project	Drawing Number	Rev.
1817 GCMLMA	02 XX DR A 7010	P1

This drawing must be printed in colour to be read correctly.

Notes
 Figure dimensions are to be used in all cases.
 Dimensions should not be scaled from drawings.
 All existing dimensions in elevations should be detailed with the architect prior to commencement of the work.
 Any discrepancies in elevations will be pointed out without the prior written consent of the Architect.
 This drawing is to be read in conjunction with all the relevant Mechanical and Electrical drawings.
 This drawing is to be read in conjunction with the relevant Fire Safety Strategy drawings.

This drawing must be read in conjunction with LMA drawings 7000 Strategy Design/PreAssessment which indicates all current and active design risks that have been identified by Lovelock Mitchell Architects in accordance with the CDM Regulations 2015.

This drawing is copyright and to be returned to the architect on completion of the contract.

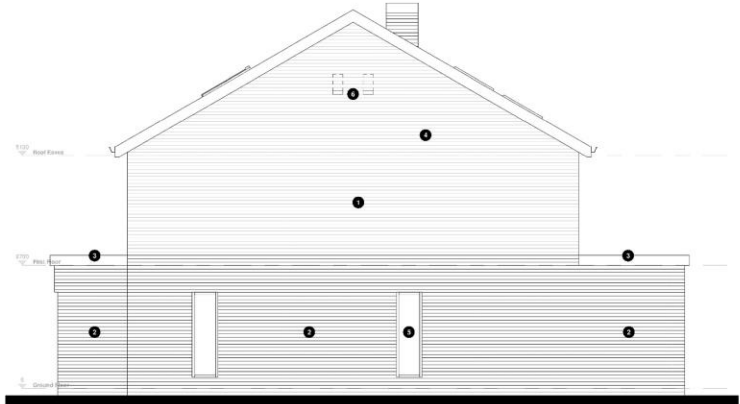
Schedule, Proposed Materials, Annotation Key	
Number	Material
1	Material: Facing Brickwork Colour: Buff TBC
2	Material: Facing Brickwork Colour: Black Grey TBC
3	Material: FPC Aluminium Cladding Colour: Grey
4	Material: Tile Roof Slab TBC
5	Material: FPC Aluminium Frame Colour: Grey TBC
6	Butt Box Not BT10, or similar appearance



1 GA_Elevation_3B5P_House_Front_Plot3&4
Scale: 1:50



2 GA_Elevation_3B5P_House_Rear_Plot3&4
Scale: 1:50



3 GA_Elevation_3B5P_House_Side-1_Plot3&4
Scale: 1:50



4 GA_Elevation_3B5P_House_Side-2_Plot3&4
Scale: 1:50

PD	Revisions added to guide elevations	CM	NAI	06/06/22
PI	Revisions made	CM	NAI	06/06/22
Rev	Revised description	Drawn	Checked	Date



Project
 Gwynedd Council
 Former Ysgol Coed Mawr Bangor

File
 GA_Elevations_5P3B_Dwelling_Plot3&4

LMA Project	Drawing Number	Rev.
1817	GCMLMA_02_XX_DR_A_7011	P2

Notes

Figured dimensions are to be used in all cases.
 Dimensions should not be scaled from drawings.
 All existing dimensions should be checked on site before commencement of the work.
 Any discrepancies in dimensions should be clarified with the Architect prior to commencement of the work.
 The decision from this drawing will be governed without the prior written consent of the Architect.
 This drawing is to be read in conjunction with all the relevant Mechanical and Electrical drawings.
 This drawing is to be read in conjunction with the relevant Fire Safety Strategy drawings.

This drawing must be read in conjunction with LMA drawings 7000 Strategy Design/Plan/Assessment which indicates all current and active emergency risks that have been identified by Lovelock Mitchell Architects in accordance with the CDM Regulations 2015.

This drawing is copyright and to be returned to the architect on completion of the contract.

Schedule, Proposed Materials, Annotation Key

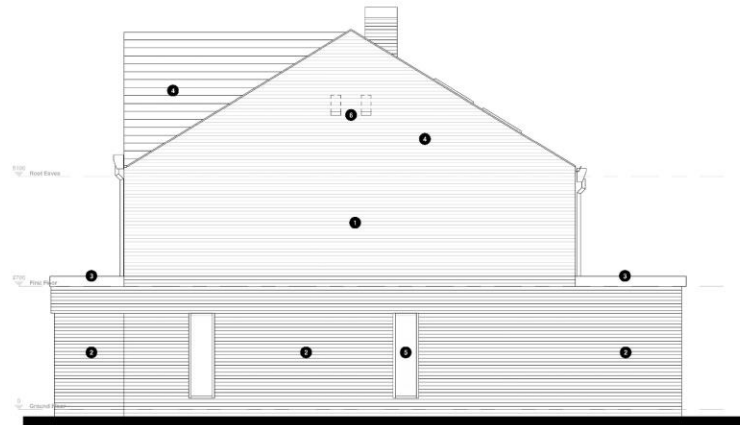
Number	Material
1	Material: Facing Brickwork Colour: Buff TBC
2	Material: Facing Brickwork Colour: Black Grey TBC
3	Material: PVC Aluminium Casings Colour: Grey
4	Material: Tile Roof Slane TBC
5	Material: PVC Aluminium Frames Colour: Grey TBC
6	Butt Joints Not BT10, or similar appearance



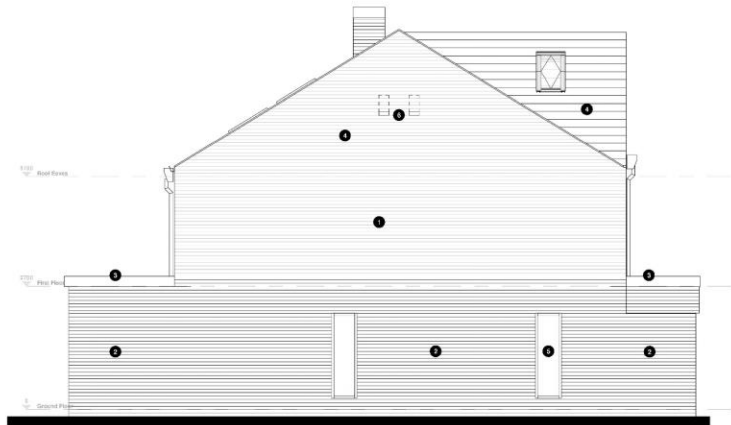
1 GA_Elevation_3B5P_House_Front_Plot5&6
Scale: 1 : 50



2 GA_Elevation_3B5P_House_Rear_Plot5&6
Scale: 1 : 50



3 GA_Elevation_3B5P_House_Side-1_Plot5&6
Scale: 1 : 50



4 GA_Elevation_3B5P_House_Side-2_Plot5&6
Scale: 1 : 50

PD	Revisions added to guide revisions	CD	NAI	05/02/22
PI	Planning Issue	CD	NAI	05/02/22
Rev	Revised description	Drawn	Checked	Date



Project
 Gwynedd Council
 Former Ysgol Coed Mawr Bangor

File
 GA_Elevations_5P3B_Dwelling_Plot5&6

LMA Project	Drawing Number	Rev.
1817	GCMLMA 02 XX DR A 7012	P2









1000 1000

KEEP CLEAR
GLITTER

No Parking
Dim Parcino



No Parking
Admission Required
24 hours
This Notice
Applies everywhere
24 hrs

SCHOOL — KEEP OFF









