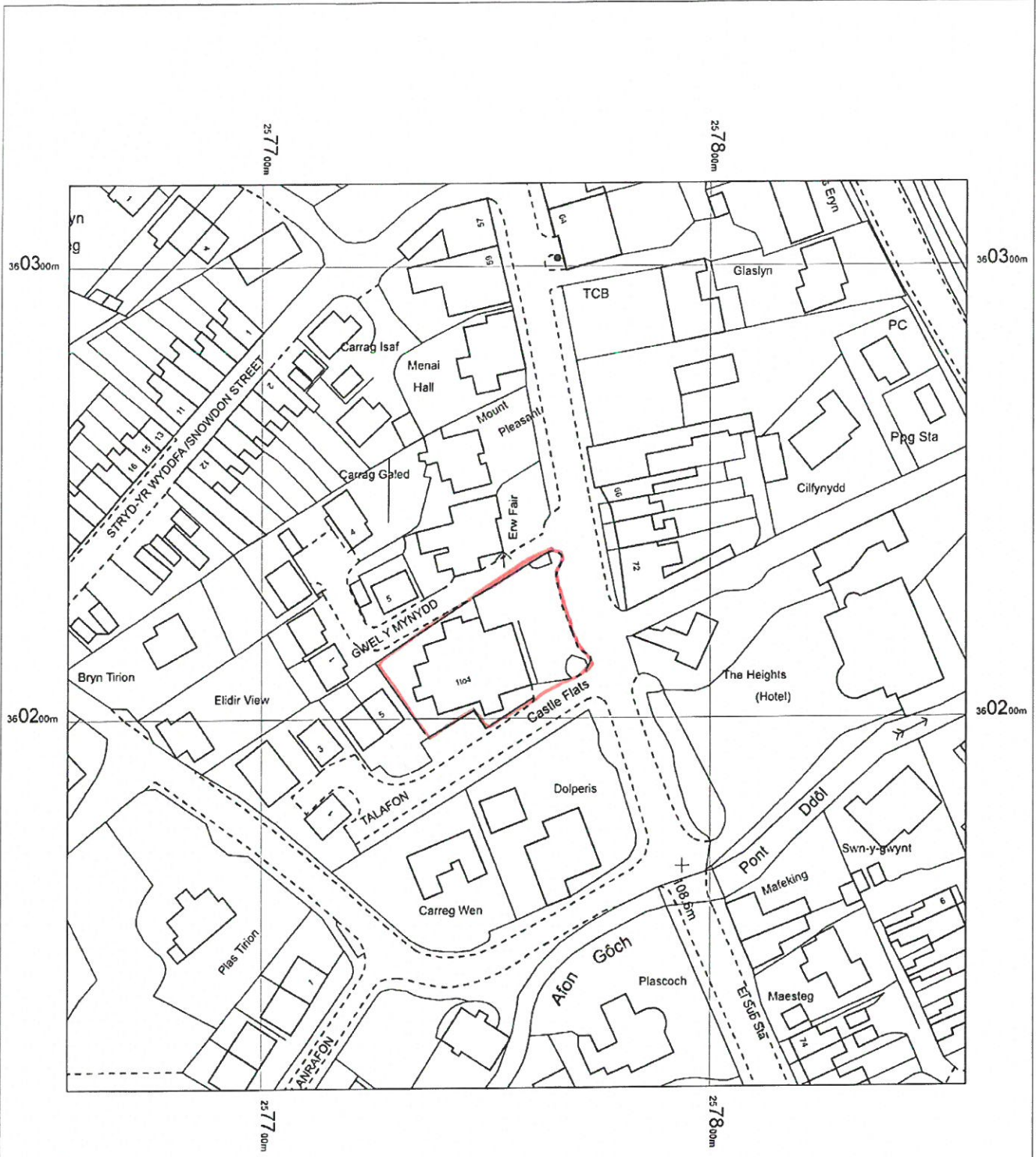




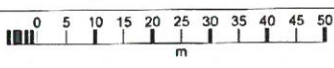
Rhif y Cais / Application Number : C15-0119-15-HY

Cynllun lleoliad ar gyfer adnabod y safle yn unig. Dim i raddfa.
Location Plan for identification purposes only. Not to scale.





© Crown Copyright. All Rights reserved
 Licence No.100042605



Spar
 High Street
 Llanberis
 LL55 4HA

OS MasterMap 1250/2500/10000 scale
 03 February 2015, ID: MDP-00397736
 www.malcolmhughes.co.uk
 1:1250 scale print at A4, Centre: 257757 E, 360218 N
 ©Crown Copyright Ordnance Survey, Licence no.
 100019980

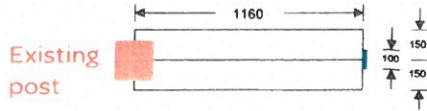


MALCOLM HUGHES
LAND SURVEYORS
 Chartered Land Surveyors

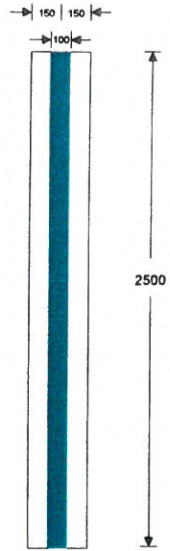


Tel: 0161 926 0650

PLAN VIEW
1:25 @ A3



SIDE PROFILE
1:25 @ A3

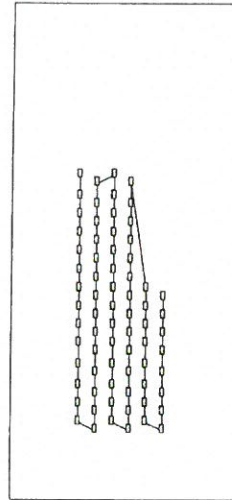


Proposed area to light
shown in black



Method of illumination

Arrangement of LED modules shown is for illustrative purposes only, exact module placement may vary during manufacture



Translucent Opal Acrylic panels c/w translucent vinyl graphics where required, mounted behind face of outer panel, fret cut to into shape of logo's

White energy efficient LED modules mounted within framework

Customer **Blakemore Design & Shopfitting Ltd.**
Contact **Jordan Lawrence**
Site Location **High street Llanberis Caernarfon, LL55 4SU**

Job no. **23432**
File no. **9P**
Dwg by **KJ**
Scale **1:25 @ A3**
Date **27th January 2015**

3- Aluminium Gantry Panels
2no. Panels double sided
Design same on both sides.

To replace existing using existing post and internal sub-frame

1160 x 2500mm
Depth of 300mm

Fabricated aluminium panels powder coated white (satin) RAL9003

Fret cut:-
Spar logo - Retail location

Backed in opal acrylic with translucent vinyl applied. Internally illuminated by LEDs

Green vinyl graphics applied 'There for you'

Costa, Subway, Post Office vinyls face applied, non-illuminated.

2500mm powder coated RAL 6029 Green box section 25x100mm aluminium box section with capped ends Fixed to side return.

3a- Renew internal illumination with LED

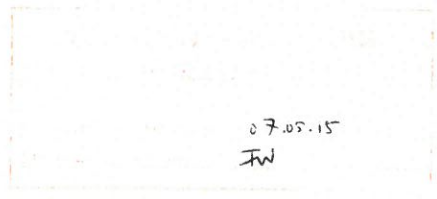
REV	ITEM	DESCRIPTION	DATE
1	[X]	[Costs added to post sign]	[17/02/15]

Signed: _____



All designs and specifications are copyright of Brand Consortia Ltd.
All rights reserved. Reproduction of these images in whole or in part without the written consent of Brand Consortia Ltd is strictly prohibited. Any breaches may result in legal action.

- Telephone 0845 2000 766
- Online www.brandconsortia.com
- Brand Consortia Ltd - Duchess Street Industrial Estate Shaw - QL2 7UT



Fabricated aluminium gantry panels to replace existing with fret cut logos & internal illumination replaced with LED.

Using existing post and internal frame. Double sided. Design same on both sides.

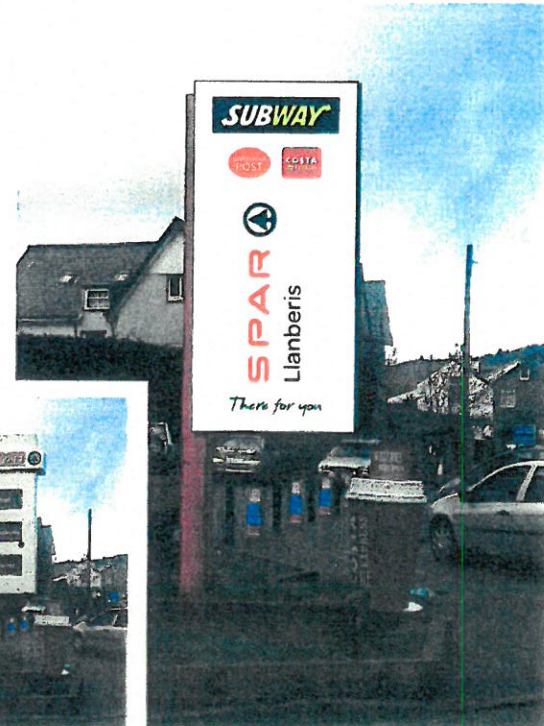
Green 25x100mm box section trim

All illuminated areas kept away from edge for lighting purposes.

To be fret cut & illuminated by LED
Spar Logo
Retailer name

Vinyl applied to face:
'There for you'
'Yma i chi'
Subway Logo
Post Office Logo
Costa Logo

Proposed -Visual purposes only



Existing Signage

EXISTING PANELS TO BE REMOVED

RENEW WITH INTERNAL LED ILLUMINATION

Existing post to remain.

New panels to clad over existing frame.

Customer **Blakemore Design & Shopfitting Ltd.**
Contact **Jordan Lawrence**
Site Location **High street
Llanberis
Caernarfon,
LL55 4SU**

Job no **23432**
File no **8P**
Dwg by **KJ**
Scale **1:100 @ A3**
Date **27th January 2015**

Existing - Visual purposes only
scale 1:100 @ A3



CYMRUOR DIWYSGIEDIG
REVISED PLAN
Drawing Date: 15.04.15
Drawing Author: *umh*

Proposed - Visual purposes only
scale 1:100 @ A3



Signed:



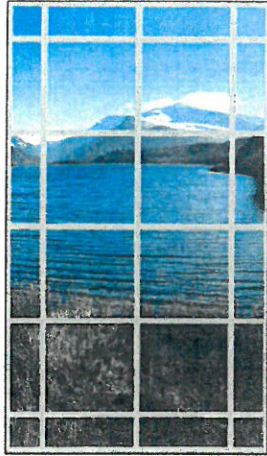
All designs and specifications are copyright of Brand Consortia Ltd.
All rights reserved. Reproduction of these images in whole or in part without the written consent of Brand Consortia Ltd is strictly prohibited. Any breaches may result in legal action.

- Telephone: 0845 2000 768
- Online: www.brandconsortia.com
- Brand Consortia Ltd - Duchess Street Industrial Estate
Shaw - OL2 7UT

WINDOW BAY 1
SPAR



WINDOW BAY 2
SPAR



WINDOW BAY 3
SPAR



WINDOW BAY 4
SUBWAY



Externally applied window graphics.
4 window bays in total

Customer Blakemore Design & Shopfitting Ltd.
Contact Jordan Lawrence
Site Location High street
Llanberis
Caernarfon,
LL55 4SU

Job no. 23432
File no. 8P
Dwg by KJ
Scale 1:25 @ A3
Date 27th January 2015

4- WINDOW GRAPHICS to 4no. Window Bays
Printed onto block out vinyl with gloss overlaminate.
Applied externally to windows.

15.04.15
GML

Proposed - Visual purposes only



WINDOW BAY 1 SPAR
WINDOW BAY 2 SPAR
WINDOW BAY 3 SPAR
WINDOW BAY 4 SUBWAY



Existing Signage



REV	ITEM	DESCRIPTION	DATE
1	(4)	[Costa added to far right window graphic] [Subway removed from bottom windows]	[17/02/15]

Signed:



All designs and specifications are copyright of Brand Consortia Ltd.
All rights reserved. Reproduction of these images in whole or in part without the written consent of Brand Consortia Ltd is strictly prohibited. Any breaches may result in legal action.

- Telephone 0845 2000 768
- Online www.brandconsortia.com
- Brand Consortia Ltd - Duchess Street Industrial Estate Show - OL2 7UT

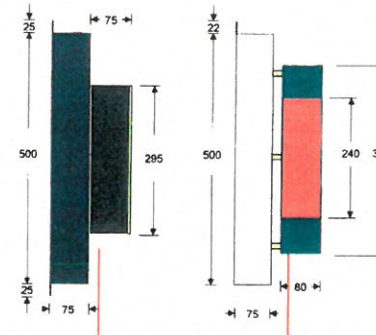


Proposed area of illumination shown in white below



Spar Fascia with built up text
4100mm x 550mm o/a
inc. 25mm upstand & downstand
Height of Tree: 375mm

Subway Fascia with built up text
4100 x 525mm o/a
inc. 22mm upstand
Height of logo overall: 295mm
Height of 'B' = 240mm
(same height of 'S' in Spar)



Energy efficient LED modules mounted internally, within rear of built-up lettering

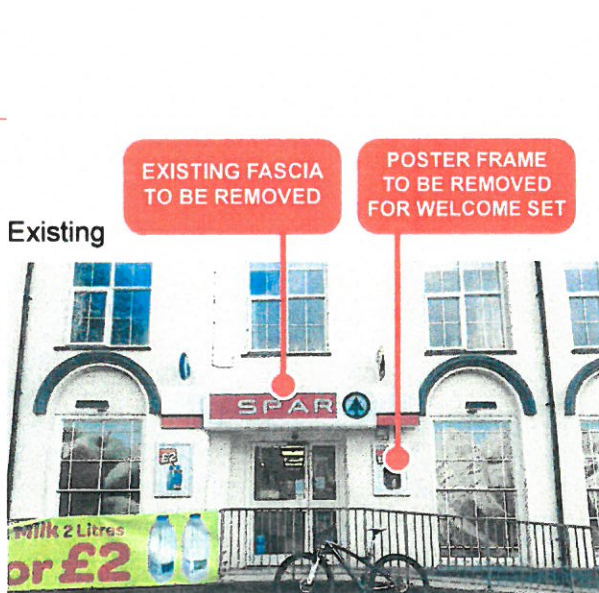
Customer **Blakemore Design & Shopfitting Ltd.**
Contact **Jordan Lawrence**
Site Location **High street
Llanberis
Caernarfon,
LL55 4SU**

Job no **23432**
File no. **BP**
Dwg by **KJ**
Scale **1:25 @ A3**
Date **27th January 2015**

- SUBWAY FASCIA: 3100 x 625 x 75 mm**
Inc. 22mm upstand
170mm depth overall
Fabricated aluminium panels
powder coated green (RAL 6005)
Built up acrylic 'SUBWAY' text (295mm overall height)
'SUB' opal acrylic faces
'WAY' yellow acrylic faces pms 109
75mm deep black acrylic returns
10mm internal foamex backtrays
illuminated by internally mounted white led's
Fascia requires 6no. fixing brackets
& full backtray
- SPAR FASCIA: 3100 x 550 x 75mm**
Inc. 25mm upstand & Downstand
155mm depth overall
Fabricated aluminium panels
powder coated white (satin) RAL9003
Built up internally illuminated lettering
fixed stand off locators and lit via LED's.

Descaled stainless steel letters c/w acrylic faces
80mm deep returns painted gloss red/green
internally illuminated via red/green led's
Height of Tree = 375mm
Fascia requires full backtray
uPVC white underdraw and sides

Proposed - Visual purposes only



15.04.15
CML

REV	ITEM	DESCRIPTION	DATE
1	(1)	[Subway logo made smaller] [Cap height of 'B' in 'Subway' same height as 'B' in 'Spar']	[17/02/15]



Signed

brand

All designs and specifications are copyright of Brand Consortium Ltd

All rights reserved. Reproduction of these images in whole or in part without the written consent of Brand Consortium Ltd is strictly prohibited. Any breaches may result in legal action.

Telephone
0845 2000 768

Online
www.brandconsortia.com

Brand Consortium Ltd - Duchess Street Industrial Estate
Shrew - OL2 7UT