



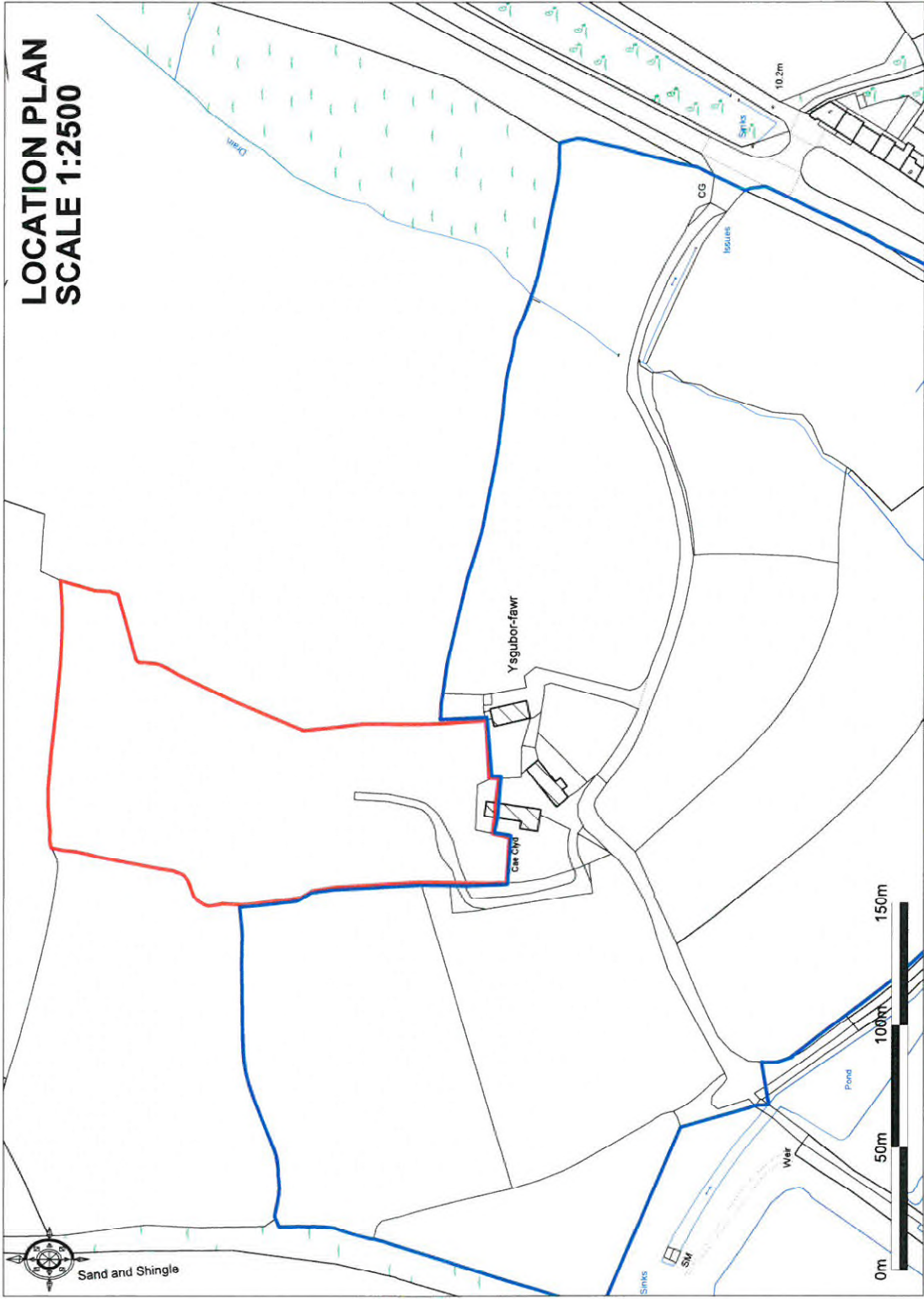
Rhif y Cais / Application Number : C14/1107/34/LL

Cynllun lleoliad ar gyfer adnabod y safle yn unig. Dim i raddfa.
Location Plan for identification purposes only. Not to scale.



Ag ym ychydig o map hwn o Ddwyloedd yr Ordnance Survey
gwybodaeth a ddiwylliant yr Ordnance Survey
er llofnodir yn ymlyngedig i'r holl ffordd.
© Crown Copyright.
Nid ydychydig o'r holl ffordd yn llofnodir
er llofnodir y Gorn a gall hyspwrdd a sefydlu neu a sefydlu
Cynllun Gwynedd - 1000 22 2277 - 200 6

The map is reproduced from Ordnance Survey materials
with the permission of Ordnance Survey
on behalf of the Controller of Her Majesty's Stationery Office
© Crown Copyright.
Unauthorized reproduction infringes Crown copyright
and may lead to prosecution and civil proceedings
Cynllun Gwynedd - 1000 22 2277 - 200 6



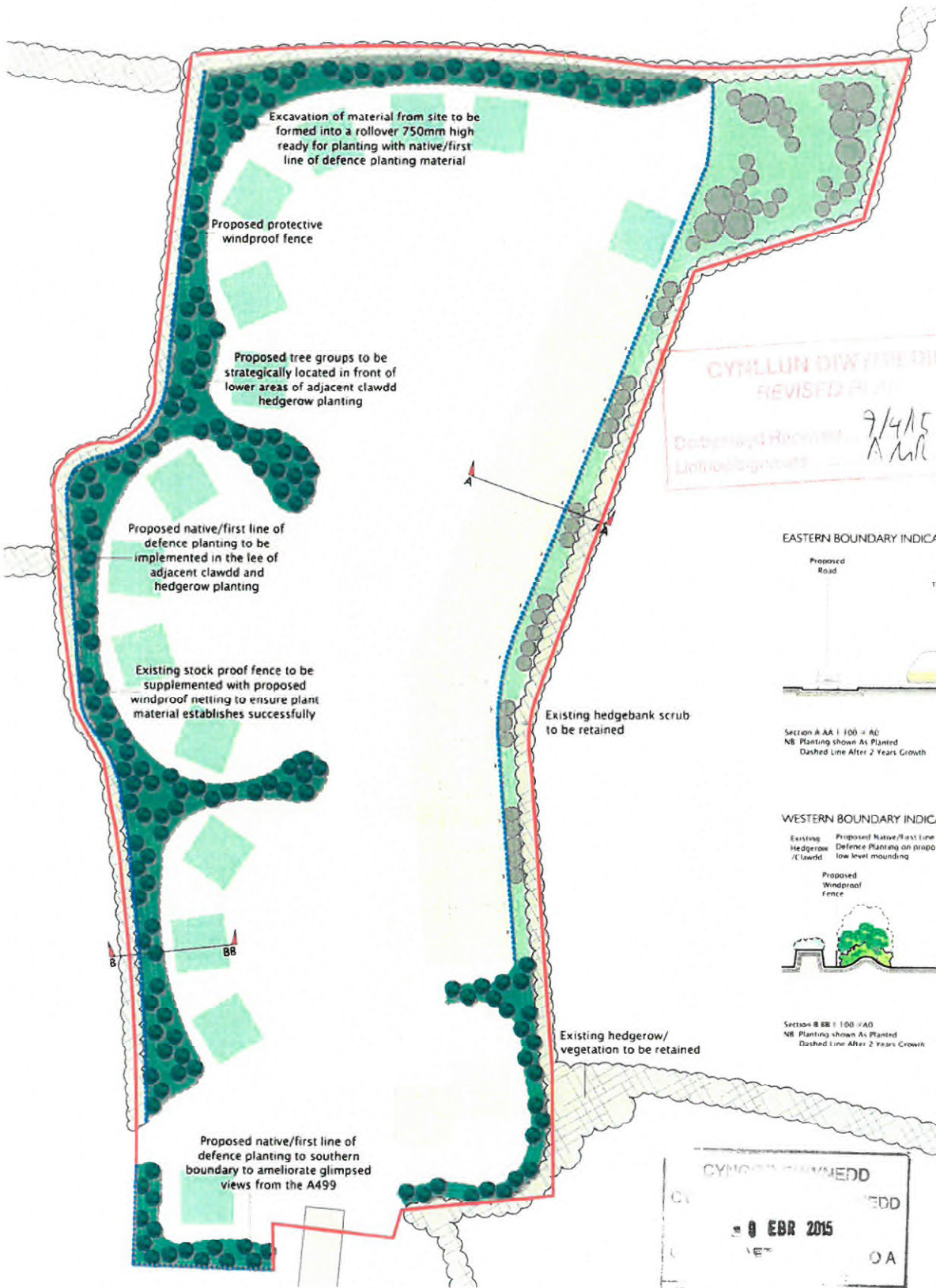
**LOCATION PLAN
SCALE 1:2500**

Ordnance Survey © Crown Copyright 2014. All rights reserved. Licence number 100024732. Plotted Scale - 1:2500



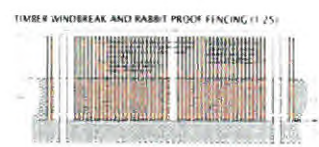
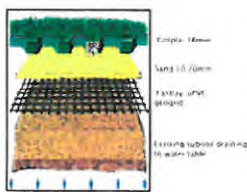
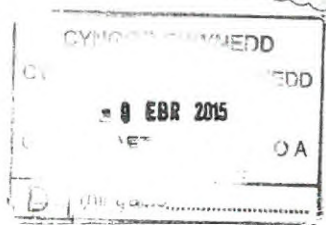
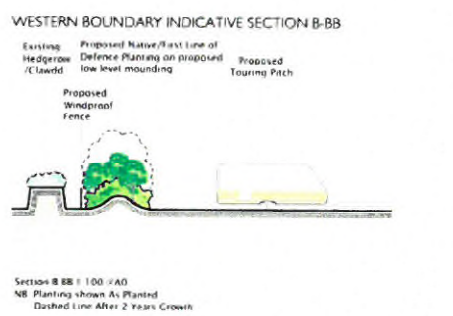
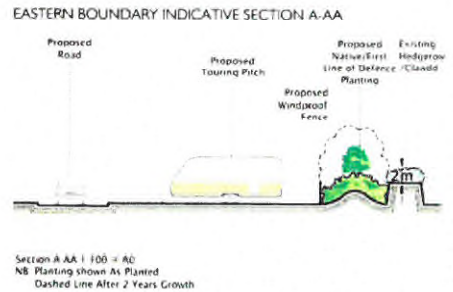
CAE CLYD CAMPSITE, YSG-GUBOR FAWR, PONTLLYFNI





LEGEND

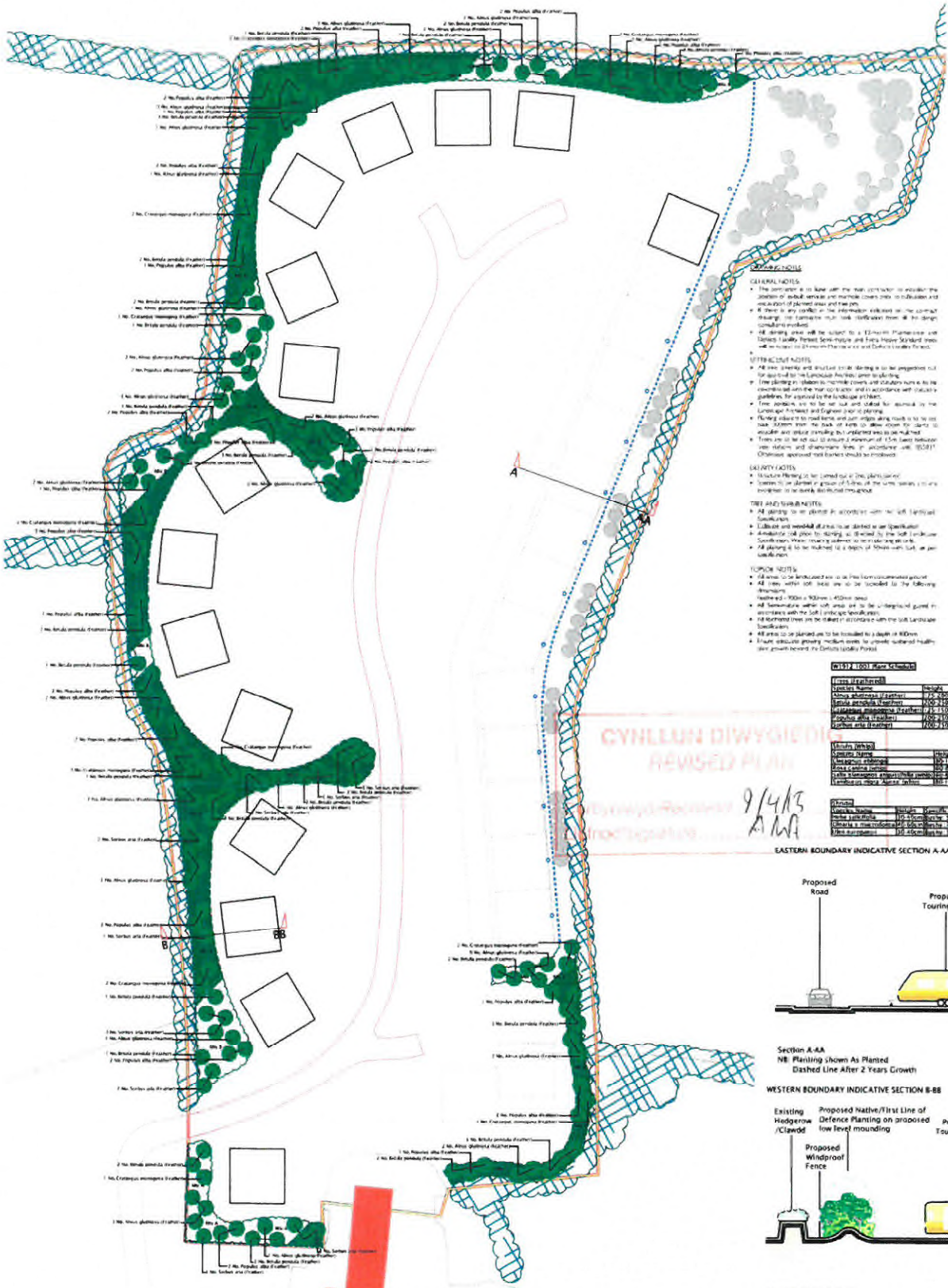
- Site Boundary
- Fencing Edge
- Fencing Existing Area of Implementation
- Excavation Area
- Proposed Tree
- Proposed Windproof Planting
- Proposed Windproof Net Planting
- Proposed Mounding
- Proposed Pitch
- Approved Planning
- Boundary



Insight to conceive
 Expertise to realise ...
Sketch Design

**CAE CLYD CAMPSITE AND TOURING AREA
 SKETCH PROPOSALS**

Landscapes Architects
 Sketch Design
 1:250 (A0) - 4/15
 March 2015 - 5/15
 2015/15 - 5/15
 A



LEGEND

- Site Boundary
- Existing Trees
- Existing Planting Already Implemented
- Existing Tree Planting Already Implemented
- Proposed Trees
- Proposed Structure Planting
- Proposed Windproof and Rabbit Proof Fencing
- Proposed Mounding
- Proposed Pitches
- Approved Pitches
- Bulkings

GENERAL NOTES

- The contractor is to liaise with the main contractor to coordinate the installation of subsoil areas and provide covers only to be installed and installation of pitched areas and the pits.
- If there is any conflict in the information indicated on the contract drawing, the contractor must seek clarification from the design consultant.
- All planting shall be subject to a 12-month Plantation and 24-month 100% Survival Guarantee and the contractor must ensure that all trees are protected and maintained for the duration of the guarantee.
- All trees to be planted shall be planted in a 12-month Plantation and 24-month 100% Survival Guarantee and the contractor must ensure that all trees are protected and maintained for the duration of the guarantee.
- Tree protection shall be installed for all trees to be planted in the 12-month Plantation and 24-month 100% Survival Guarantee.
- Flanking adjacent to road kerb and car park shall be installed to be at least 300mm from the back of kerb to allow space to be made for existing and future planting but not less than 100mm.
- There are to be 40mm to 60mm diameter of 12.5mm diameter steel mesh and 40mm diameter steel mesh to be installed with 100mm clearance around the perimeter of the pits.
- Clearance around the perimeter of the pits shall be 100mm.

VEGETATION NOTES

- Structure Planting is to be planted in the pits shown.
- Species to be planted in groups of 30 or more to be planted in a 12-month 100% Survival Guarantee.

TREE AND SHRUB SPECIES

- All planting is to be planted in accordance with the following specifications:
- 1.5m high and 40mm diameter to be planted in a 12-month 100% Survival Guarantee.
- 1.8m high and 50mm diameter to be planted in a 12-month 100% Survival Guarantee.
- 2.1m high and 60mm diameter to be planted in a 12-month 100% Survival Guarantee.
- 2.4m high and 75mm diameter to be planted in a 12-month 100% Survival Guarantee.
- 2.7m high and 90mm diameter to be planted in a 12-month 100% Survival Guarantee.
- 3.0m high and 100mm diameter to be planted in a 12-month 100% Survival Guarantee.
- 3.3m high and 110mm diameter to be planted in a 12-month 100% Survival Guarantee.
- 3.6m high and 120mm diameter to be planted in a 12-month 100% Survival Guarantee.
- 3.9m high and 130mm diameter to be planted in a 12-month 100% Survival Guarantee.
- 4.2m high and 140mm diameter to be planted in a 12-month 100% Survival Guarantee.
- 4.5m high and 150mm diameter to be planted in a 12-month 100% Survival Guarantee.
- 4.8m high and 160mm diameter to be planted in a 12-month 100% Survival Guarantee.
- 5.1m high and 170mm diameter to be planted in a 12-month 100% Survival Guarantee.
- 5.4m high and 180mm diameter to be planted in a 12-month 100% Survival Guarantee.
- 5.7m high and 190mm diameter to be planted in a 12-month 100% Survival Guarantee.
- 6.0m high and 200mm diameter to be planted in a 12-month 100% Survival Guarantee.

VEGETATION NOTES

- All areas to be landscaped are to be planted in accordance with the following specifications:
- 1.5m high and 40mm diameter to be planted in a 12-month 100% Survival Guarantee.
- 1.8m high and 50mm diameter to be planted in a 12-month 100% Survival Guarantee.
- 2.1m high and 60mm diameter to be planted in a 12-month 100% Survival Guarantee.
- 2.4m high and 75mm diameter to be planted in a 12-month 100% Survival Guarantee.
- 2.7m high and 90mm diameter to be planted in a 12-month 100% Survival Guarantee.
- 3.0m high and 100mm diameter to be planted in a 12-month 100% Survival Guarantee.
- 3.3m high and 110mm diameter to be planted in a 12-month 100% Survival Guarantee.
- 3.6m high and 120mm diameter to be planted in a 12-month 100% Survival Guarantee.
- 3.9m high and 130mm diameter to be planted in a 12-month 100% Survival Guarantee.
- 4.2m high and 140mm diameter to be planted in a 12-month 100% Survival Guarantee.
- 4.5m high and 150mm diameter to be planted in a 12-month 100% Survival Guarantee.
- 4.8m high and 160mm diameter to be planted in a 12-month 100% Survival Guarantee.
- 5.1m high and 170mm diameter to be planted in a 12-month 100% Survival Guarantee.
- 5.4m high and 180mm diameter to be planted in a 12-month 100% Survival Guarantee.
- 5.7m high and 190mm diameter to be planted in a 12-month 100% Survival Guarantee.
- 6.0m high and 200mm diameter to be planted in a 12-month 100% Survival Guarantee.

VEGETATION NOTES

- All areas to be landscaped are to be planted in accordance with the following specifications:
- 1.5m high and 40mm diameter to be planted in a 12-month 100% Survival Guarantee.
- 1.8m high and 50mm diameter to be planted in a 12-month 100% Survival Guarantee.
- 2.1m high and 60mm diameter to be planted in a 12-month 100% Survival Guarantee.
- 2.4m high and 75mm diameter to be planted in a 12-month 100% Survival Guarantee.
- 2.7m high and 90mm diameter to be planted in a 12-month 100% Survival Guarantee.
- 3.0m high and 100mm diameter to be planted in a 12-month 100% Survival Guarantee.
- 3.3m high and 110mm diameter to be planted in a 12-month 100% Survival Guarantee.
- 3.6m high and 120mm diameter to be planted in a 12-month 100% Survival Guarantee.
- 3.9m high and 130mm diameter to be planted in a 12-month 100% Survival Guarantee.
- 4.2m high and 140mm diameter to be planted in a 12-month 100% Survival Guarantee.
- 4.5m high and 150mm diameter to be planted in a 12-month 100% Survival Guarantee.
- 4.8m high and 160mm diameter to be planted in a 12-month 100% Survival Guarantee.
- 5.1m high and 170mm diameter to be planted in a 12-month 100% Survival Guarantee.
- 5.4m high and 180mm diameter to be planted in a 12-month 100% Survival Guarantee.
- 5.7m high and 190mm diameter to be planted in a 12-month 100% Survival Guarantee.
- 6.0m high and 200mm diameter to be planted in a 12-month 100% Survival Guarantee.

Mix A

- 10 No. Elaeagnus oblongifolia
- 10 No. Hebe salicifolia
- 10 No. Ostrya macrocarpa
- 10 No. Rosa canina (whip)
- 10 No. Salix elaeagnos angustifolia (whip)
- 10 No. Symphoricarpos alba (whip)
- 10 No. Ulex europaeus

Mix B

- 10 No. Elaeagnus oblongifolia
- 10 No. Hebe salicifolia
- 10 No. Ostrya macrocarpa
- 10 No. Rosa canina (whip)
- 10 No. Salix elaeagnos angustifolia (whip)
- 10 No. Symphoricarpos alba (whip)
- 10 No. Ulex europaeus

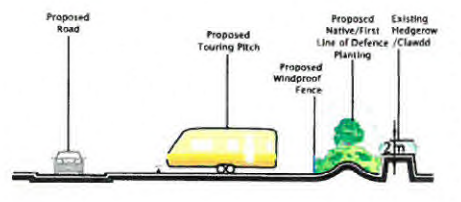
Mix C

- 10 No. Elaeagnus oblongifolia
- 10 No. Hebe salicifolia
- 10 No. Ostrya macrocarpa
- 10 No. Rosa canina (whip)
- 10 No. Salix elaeagnos angustifolia (whip)
- 10 No. Symphoricarpos alba (whip)
- 10 No. Ulex europaeus

CYLLUN DIWYGIEDD
REVISED PLAN

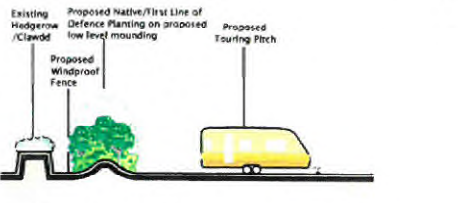
9/4/15
A/A

EASTERN BOUNDARY INDICATIVE SECTION A-AA



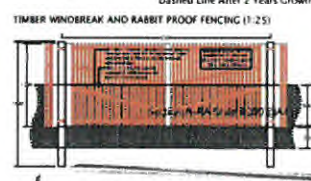
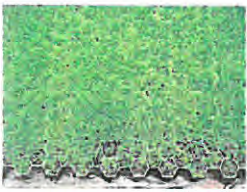
Section A-AA
NB: Planting shown As Planted
Dashed Line After 2 Years Growth

WESTERN BOUNDARY INDICATIVE SECTION B-BB



Section B-BB
NB: Planting shown As Planted
Dashed Line After 2 Years Growth

PROPOSED COLPIA



Insight to conceive
Expertise to realise...
Detailed Design
CAE CLYD CAMPSITE AND TOURING AREA
DETAILED DESIGN

LANDSCAPE ARCHITECTS
DAVE
Detailed Design
1:250 @A0 RP
March 2015 SJL
W1912 1001