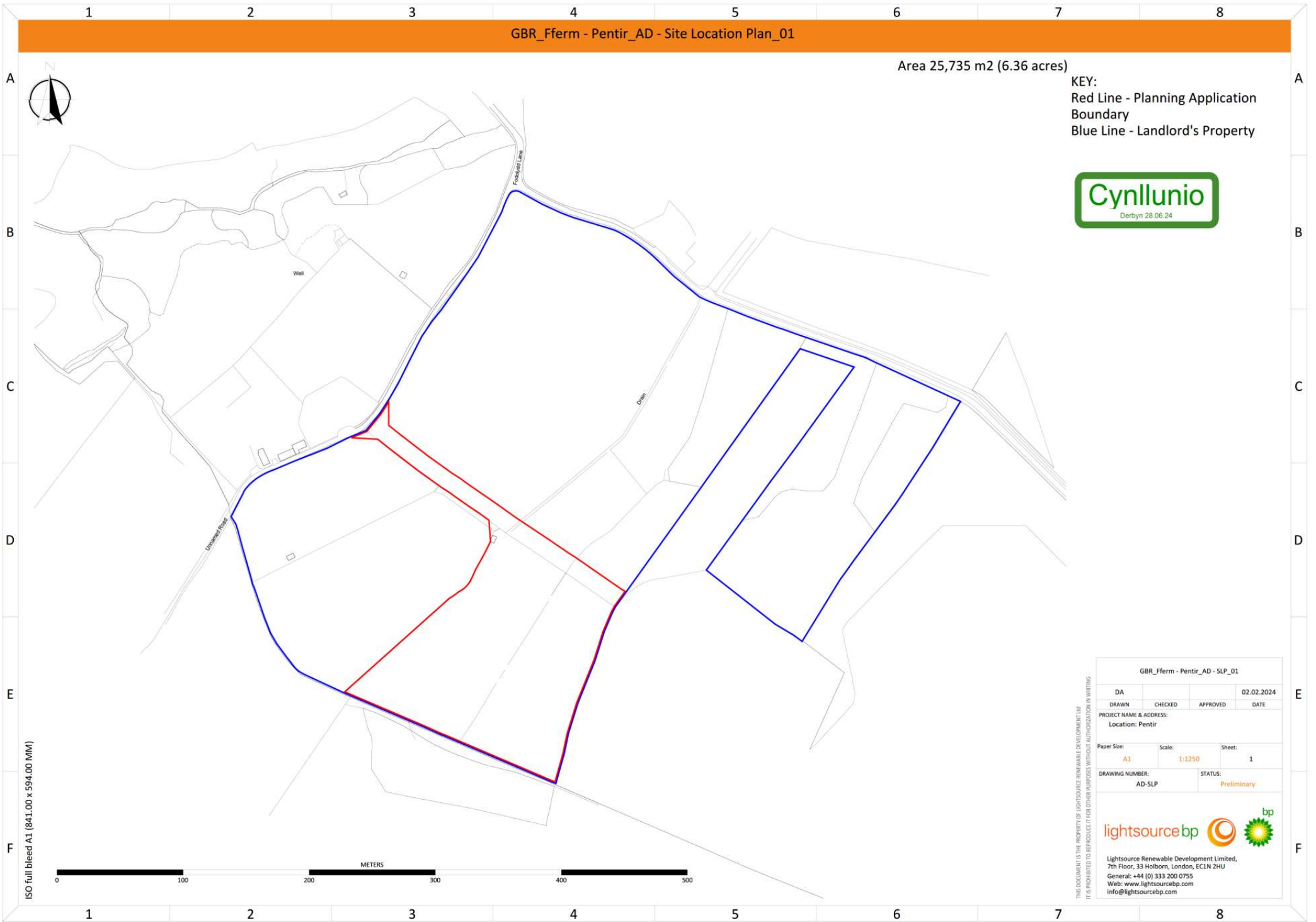


Area 25,735 m2 (6.36 acres)

KEY:
Red Line - Planning Application
Boundary
Blue Line - Landlord's Property



ISO full bleed A1 (841.00 x 594.00 MM)

THIS DOCUMENT IS THE PROPERTY OF LIGHTSOURCE RENEWABLE DEVELOPMENT LTD
IT IS PROHIBITED TO REPRODUCE IT FOR OTHER PURPOSES WITHOUT AUTHORIZATION IN WRITING

GBR_Fferm - Pentir_AD - SLP_01			
DA	CHECKED	APPROVED	02.02.2024
DRAWN	CHECKED	APPROVED	DATE
PROJECT NAME & ADDRESS: Location: Pentir			
Paper Size:	Scale:	Sheet:	
A1	1:1250	1	
DRAWING NUMBER: AD-SLP		STATUS: Preliminary	
			
Lightsource Renewable Development Limited, 7th Floor, 33 Holborn, London, EC1N 2HU General: +44 (0) 333 200 0755 Web: www.lightsourcebp.com info@lightsourcebp.com			

Area 25,735 m2 (6.36 acres)



Site Access

	Site Boundary
	BESS Security Fence
	Acoustic Fence
	Site Access
	BESS Enclosure x 4
	Twin MV Skid
	Single MV Skid
	Backup Generator
	BESS Monitoring House
	BESS Intake Substation
	GRP
	Storage
	Spares Container
	Spares Container
	Access Road
	Toilet
	Acoustic Access Gate
	CCTV
	BESS Lighting
	Existing Tree
	Proposed Planting
	Proposed Tree Planting
	Proposed hedge removal



DA			27.03.2024
DRAWN	CHECKED	APPROVED	DATE

PROJECT NAME & ADDRESS:
 Location: Pentir
 Postcode:

NOTES:

Paper Size:	Scale:	Sheet:
A3	1:2500	1

CAPACITY:

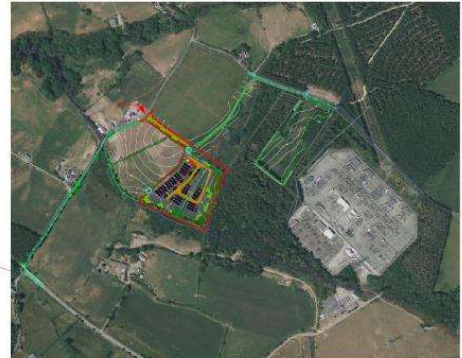
DRAWING TITLE:
 GBR_Pentir_Indicative BESS Layout_05

DRAWING NUMBER: BESS_LYT STATUS:



Lightsource Renewable Development Limited,
 7th Floor, 33 Holborn, London, EC1N 2HU
 General: +44 (0) 33 200 0755
 Web: www.lightsourcebp.com
 info@lightsourcebp.com

Scale 1:12500



ISO Full bleed A3 (420.00 x 297.00 MM)



THIS DOCUMENT IS THE PROPERTY OF LIGHTSOURCE RENEWABLE DEVELOPMENT LTD. IT IS PROHIBITED TO REPRODUCE IT FOR OTHER PURPOSES WITHOUT AUTHORIZATION IN WRITING.

A

B

C

D

E

F

A

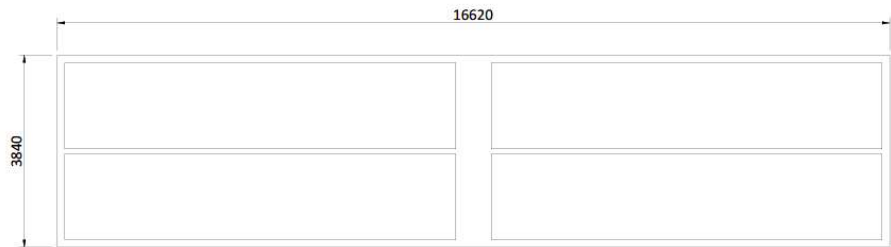
B

C

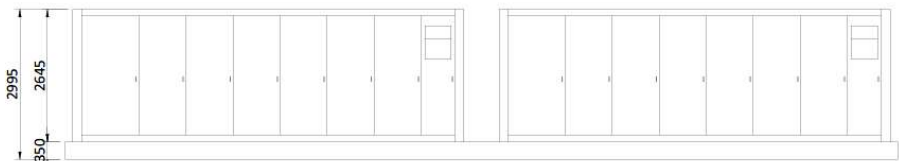
D

E

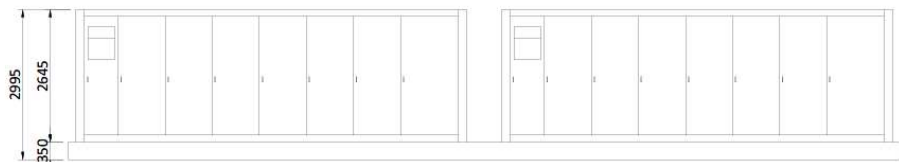
F



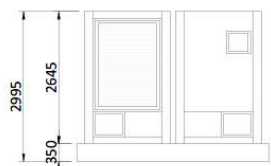
PLAN VIEW



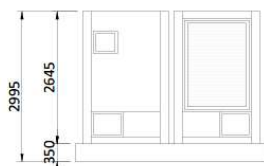
FRONT ELEVATION



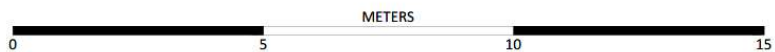
BACK ELEVATION



SIDE ELEVATION



SIDE ELEVATION



A3 - (420 x 297)mm

THIS DOCUMENT IS THE PROPERTY OF LIGHTSOURCE RENEWABLE DEVELOPMENT LTD. IT IS PROHIBITED TO REPRODUCE IT FOR OTHER PURPOSES WITHOUT AUTHORIZATION IN WRITING.

UK_EPD_BESS Enclosures_00			
DRAWN	CHECKED	APPROVED	DATE
			Nov. 2023
Paper Size: A3		Scale: 1:100	Sheet: 1
DRAWING NUMBER: UK_EPD_BSS		STATUS: Rev 0.1	
Lightsource Renewable Development Limited, 7th Floor, 33 Holborn, London, EC1N 2HU General: +44 (0) 333 200 0755 Web: www.lightsourcebp.com info@lightsourcebp.com			

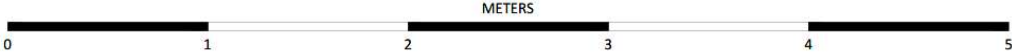
1 2 3 4 5 6 7 8

GBR_Pentir_EPD_Acoustic Fence_00



Note: Colour to be agreed with planning authority post consent

A3 - (420 x 297)mm



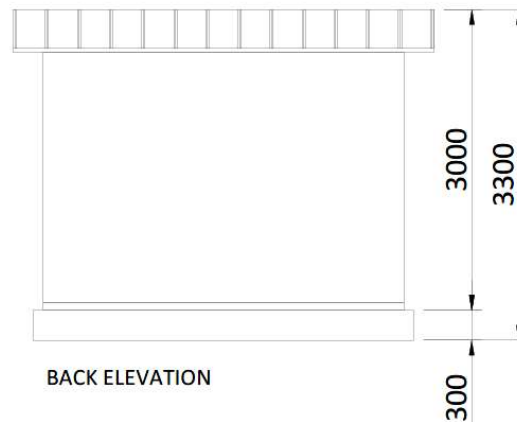
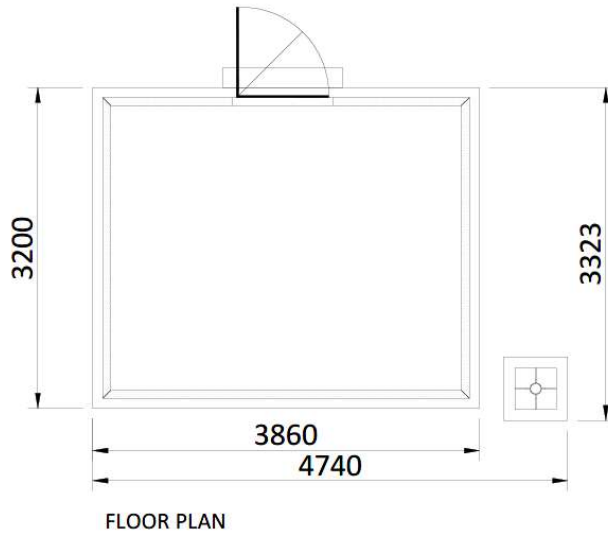
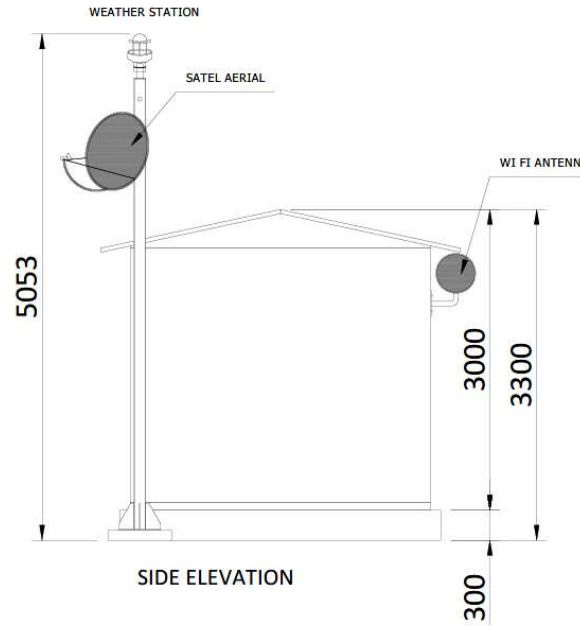
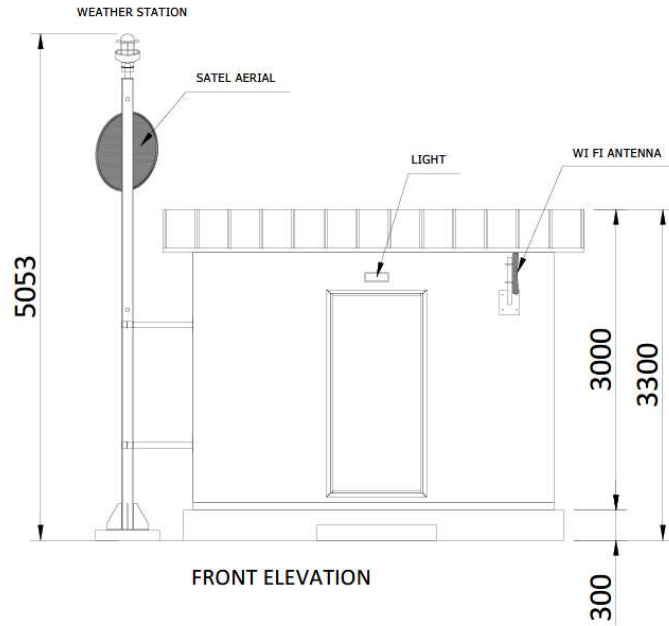
GBR_Pentir_EPD_Acoustic Fence_00

DA			09.04.2024
DRAWN	CHECKED	APPROVED	DATE
Paper Size: A3	Scale: 1:20	Sheet: 1	
DRAWING NUMBER: GBR_EPD_ACF		STATUS: Preliminary	

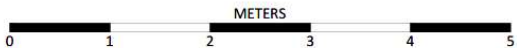
lightsourcebp  

Lightsource Renewable Development Limited,
7th Floor, 33 Holborn, London, EC1N 2HU
General: +44 (0) 333 200 0755
Web: www.lightsourcebp.com
Info@lightsourcebp.com

THIS DOCUMENT IS THE PROPERTY OF LIGHTSOURCE RENEWABLE DEVELOPMENT LTD. IT IS PROHIBITED TO REPRODUCE IT FOR OTHER PURPOSES WITHOUT AUTHORIZATION IN WRITING.



A3 - (420 x 297)mm

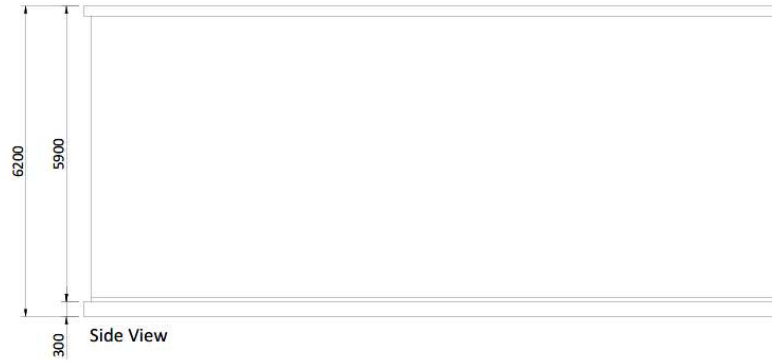
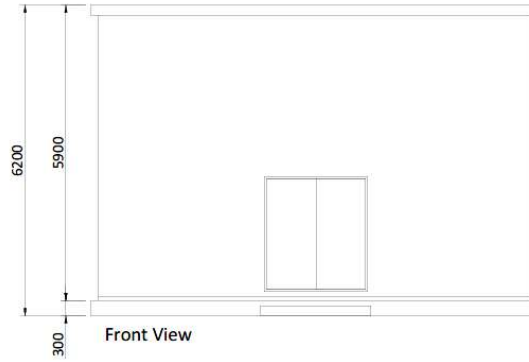


THIS DOCUMENT IS THE PROPERTY OF LIGHTSOURCE RENEWABLE DEVELOPMENT LTD. IT IS PROHIBITED TO REPRODUCE IT FOR OTHER PURPOSES WITHOUT AUTHORIZATION IN WRITING.

GBR_EPД_Monitoring House/Communication Building_01		Nov. 2023	
DA	CHECKED	APPROVED	DATE
Paper Size: A3	Scale: 1:50	Sheet: 1	
DRAWING NUMBER: GBR_EPД_MH/CB		STATUS: Rev 01	

lightsourcebp

Lightsource Renewable Development Limited,
7th Floor, 33 Holborn, London, EC1N 2HU
General: +44 (0) 333 200 0755
Web: www.lightsourcebp.com
info@lightsourcebp.com



GBR_Fferm - Pentir_EPd_Storage_00			
DA			08.04.2024
DRAWN	CHECKED	APPROVED	DATE
Paper Size:	Scale:	Sheet:	
A3	1:100	1	
DRAWING NUMBER:		STATUS:	
GBR_EPd_STG		Preliminary	
			
Lightsource Renewable Development Limited, 7th Floor, 33 Holborn, London, EC1N 2HU General: +44 (0) 333 200 0755 Web: www.lightsourcebp.com info@lightsourcebp.com			

THIS DOCUMENT IS THE PROPERTY OF LIGHTSOURCE RENEWABLE DEVELOPMENT LTD.
 IT IS PROHIBITED TO REPRODUCE IT FOR OTHER PURPOSES WITHOUT AUTHORISATION IN WRITING

A3 - (420 x 297)mm



Safbwynt Cynrychiadol 1:

Ffordd o'r B4547 gan fynd heibio Fferm Garth i Lôn Fodolydd gan edrych i'r Dwyrain.



Safbwynt Cynrychiadol 2:

Ffordd o'r B4547 gan fynd heibio Fferm Garth i Lôn Fodolydd gan edrych i'r Dwyrain.



Safbwynt Cynrychiadol 3:

Ffordd o'r B4366 gan fynd heibio Pentref Seion I Nant y Garth gan edrych i'r Gogledd.





